



Toilet training and Nappy/Clothes changing Policy

Table of Contents

Strategies and signs of readiness	2
Changing procedure	3



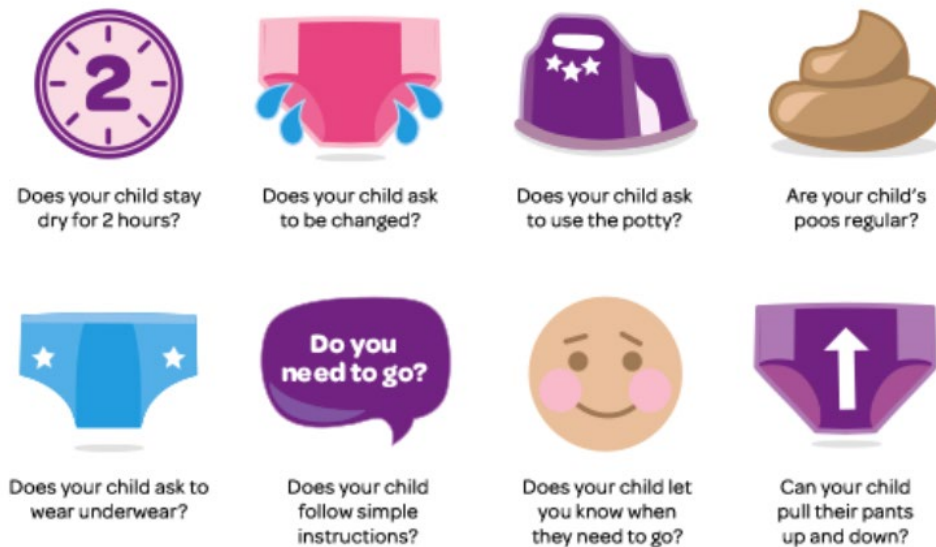
At Rocket Productions we understand that each child develops at their own pace and so we acknowledge that not all children will be dry at 2 years of age. However, we ask that every child has already started and is well on their way to be fully trained before school starts. Combining starting a new school and toilet training at the same time can often be upsetting for the child. Our teachers are very experienced and will be able to support you along the way.

Strategies and signs of readiness

Staff will ensure that:

- They discuss with the parents/carers a suitable routine that can be used both at home and at school
- Ensure that parents/carers bring their child in pull ups (no nappies)
- Ensure that parents dress children in loose clothing e.g. leggings, loose trousers etc. avoiding belts and tight clothing that might make loo runs difficult
- Ensure that parents provide a change of clothes, underwear and footwear in case of accidents

8 signs of readiness



Some of the strategies that we follow at our Rocket Productions Pre-Peps are:

- Toilet training is a joint effort between teacher and parent/carers
- The staff will need to know any special words your child uses at home to express the need for the toilet
- Staff to be sensitive and respectful of the individual needs of each child
- Children will be assisted in the loo by their key person (as they need to be familiar and feel comfortable with this person). We use children's trainer seats that sit on standard loos.
- Children will not be forced to use the loo against their wishes
- Staff to provide lots of positive praise and encouragement
- Discuss toilet training and hygiene with children, i.e. sharing stories relating to toilet training. We also invite parents to borrow books from our school



- Follow a reward system both at school and at home i.e. Sticker chart
- Use a timer (egg timer) to help remind the child to go to the loo regularly

All staff are aware that this process can be overwhelming for parents. For this reason, we encourage parents to stay positive as accidents do happen and regression is not uncommon. If this happens, staff will continue to provide lots of positive praise and encouragement. Parents and carers are always welcomed to discuss any concerns with their child's teacher.

Both the NHS and NCT websites have more tips on toilet training, follow this link for more advice:

<https://www.nct.org.uk/parenting/potty-training>

Changing procedure

We wish to ensure the safety and welfare of the children whilst being changed as well as ensuring the staff member involved is fully supported and able to perform their duties safely and confidently. All children need contact with familiar, consistent carers to ensure they can grow confidently and feel self-assured. Wherever possible, the key person will adhere to the child's individual needs and requirements.

- Toilet facilities are situated in corridors at the front and or back of the setting. This provides enough privacy for the child, however, team-teachers will be informed and doors will always remain opened while changing a child in order to ensure the safety of the child and to avoid allegations of abuse. By leaving the doors opened we allow staff in the immediate facilities to supervise the person in the changing area. In addition we operate a whistleblowing policy and effective and on-going supervision which allows staff to discuss or raise any concerns about their colleagues
- Key person to be sensitive and respectful of the individual needs of the child and to ensure the child feels cared for, safe and comfortable at all times
- Using this one-to-one time as a key learning opportunity, e.g. talk to children to make them feel comfortable, using favourite nursery rhymes, etc.
- Gloves are to be worn at all times when changing a child
- Soiled clothes will be removed and bagged to go home, never rinsed by hand
- Heavily soiled underwear and all pull ups will be disposed of in a provided Nappy bin. All waste will be disposed of daily
- Wipes will be used when cleaning a child, ensuring that the child feels safe and comfortable at all times. Children will not be punished or made to feel uncomfortable or embarrassed. Children will be cleaned front to back to avoid contamination
- Wipes and gloves will be disposed of in a provided Nappy bin
- Children will be dressed in clean clothes
- Ensure hygiene procedures are followed appropriately, e.g. hands washed before and after nappies/clothes are changed and changing mats to be sterilised before and after every use with provided safe cleaning products
- Parents will be informed of any accidents at home time