

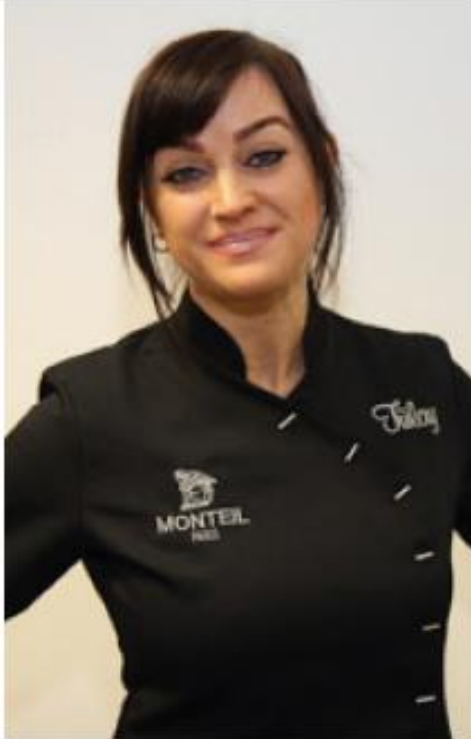


MONTEIL
Competence Training



MONTEIL
PARIS

TIMELESS BEAUTY. *Ever Now.*



YOUR SPEAKER TODAY

TÜLAY DOĞAN

MONTEIL INTERNATIONAL TRAINER

Germaine Monteil – La Grande Dame



»*Beauty*
is not a gift, rather the combination
of natural *charisma*,
personal *style*
and expert *care*.«

Back then...

Germaine Monteil – Pioneer of her time

Her entrepreneurial spirit is characterised by innovation and enthusiasm .

The combination of maximum **knowledge, intuition and science** **are the basis for our brand.**

A vision became reality: fashion, beauty, care in a **tailored beauty concept.**

A new life style for all confident women!

An effective promise

- Founded in **1936** as a fashion label by **Germaine Monteil**.
- Development into a **premium label** for **personal care cosmetics for 85 years**.
- We are the **anti-aging expert for timeless beauty** and supporting our clientel their whole lives.
- **Not just cosmetic products, but extensive skincare worlds for individual customer needs.**

THE PRODUCTS

Product philosophy

The profound understanding of the biology of skin forms the basis for development of bio-active ingredients.

High-quality, rich **care products**, which answer **individual skin requirements**, with high anti-aging effectiveness.

USP: Rational combination and optimum concentration of the respective ideal ingredients.

THE NEEDS OF THE SKIN



PREVENTION & MOISTURISATION

20+

Skin is young and fresh, however small signs of skin aging are gradually becoming visible. The right time to start with a skin care system and specifically slow down the aging process.

PROTECTION & CARE

30+

Gradually, skin requires more care, delicate lines are becoming apparent round the eyes or on the forehead. Alongside the standard aging process, environmental effects are now more noticeable. Cell activity decreases and the barrier layer of the skin becomes more permeable.

FIRM & TIGHTEN

40+

Skin is gradually becoming thinner and drier. Through lower moisture content, the skin loses elasticity and firmness. Wrinkles become more obvious. Hormone fluctuations during the menopause upset the balance.

VITALISE & BUILD UP

55+

The skin requires a lot of care, pores become enlarged and skin becomes drier. The creases grow into wrinkles. The skin care system should be optimised now and skin care should be particularly rich.

TIMELESS BEAUTY. *Ever Now.*

MONTEIL RANGE



NEW

PREVENTION & MOISTURISATION



20+

HYDRO CELL

The intelligent skin care system for maximum moisturisation and cell regeneration

PROTECTION & CARE



30+

PROBEACTIVE +

Stops skin aging before it happens

FIRM & TIGHTEN



40+

FEEL SATIN

The multi-dimensional, global anti-aging skin care with immediate effect

VITALISE & BUILD UP



55+

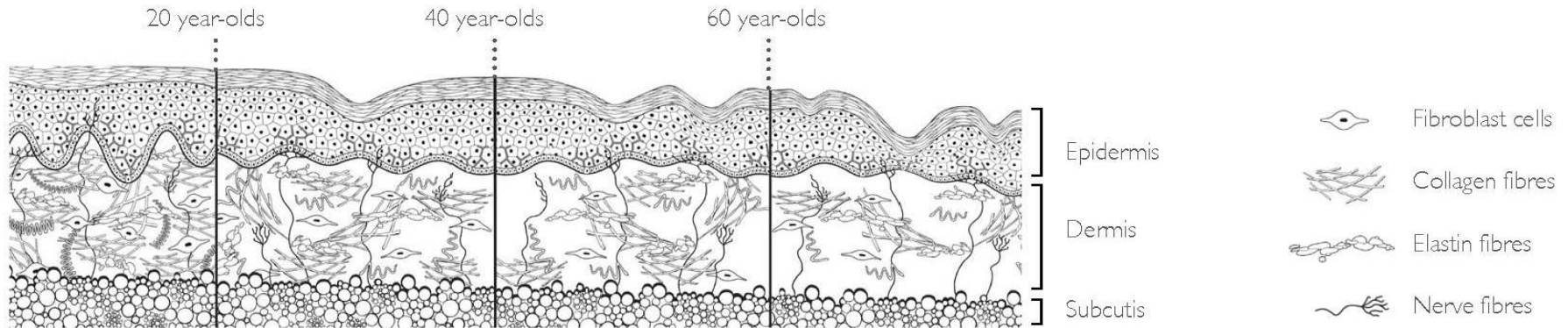
ACTI-VITA

The intelligent anti-aging nutrient-rich regeneration product

TIMELESS BEAUTY. *Ever Now.*

Skin aging process

Skin aging is a slow process in all layers of the skin



EPIDERMIS:

- **Reduced cell division**
Skin becomes thinner, more sensitive and drier
- **The barrier function is weakened**

DERMIS:

- **Reduced fibroblast activity**
Less collagen, elastin and hyaluronic acid
- **The rate of production of lipids decreases**
Deeper wrinkles, dry skin
- **The connective tissues lose elasticity and tonicity**

SUBCUTIS:

- **Decreasing ability to store nutrients**
- **Poorer blood circulation**

Factors in skin aging



UV- LIGHT

Increased formation of free radicals:

- They damage proteins
- Attack fat molecules
- Cause breakages in the DNA strands

Effect: Free radicals activate enzymes which break down collagen and dissolve the connective tissues.



ENVIRONMENTAL POLLUTION

Free radicals are caused by environmental pollution:

- Fine dust particles, pesticides, exhaust fumes, electrosmog, etc.
- Oxidative stress damages cell structure

Effect: Mit zunehmendem Alter nimmt der Selbstschutz der Haut immer mehr ab, die Haut altert schneller.



HORMONAL BALANCE

The production of growth & sexual hormones reduces:

- Lower oestrogen levels after the menopause, together with slower cell regeneration, have an impact on the skin structure.

Effect: Loss in volume and a decrease in elasticity.



DIET

An unhealthy diet affects the skin:

- An unbalanced diet or one which is low in fluids
- Lack of nutrients
- Alcohol, nicotine
- Sugar

Effect: Nutrient deficiency in the cells leads to premature skin aging



LIFESTYLE

An unhealthy lifestyle affects the skin:

- Lack of sleep
- Lack of movement
- Physical and psychological stress
- Taking medication

Effect: Shorter regeneration phase for the skin – it becomes thinner, looser, irritable and has a tendency to form wrinkles



MONTEIL
PARIS

HYDRATING ANTI-AGING

RICH IN MOISTURE WITH
THE VITALITY OF THE SEA



HYDRO CELL

HYDRO CELL concept

Hydrating anti-aging to provide a maximum hydration and regenerates the cells & Detox!

Pure moisture - with the power of the Sea.

Hydro-active factors giving the skin as much moisture as it requires. They also regulating the moisture balance and restoring the skin balance.

HYDRO CELL Facts

- Effectiveness of the **active ingredients** scientifically proven
- Prix de L'INNOVATION 2009
- Maximum **moisture** – any age
- **Cell regeneration**
- **Detox**
- Unisex
- Basic care
- Products dermologically testes
- High quality ingredients
- Quality Made in Germany
- **Affordable price**
- **Light texture, fresh fragrance**

HYDRO CELL



Youthfully beautiful skin with energy derived from the sea.

Intensively hydrated

Detoxified

Regenerated

- Anti-Pollution
- A high compatibility
- Suitable for all skin types, also for impure and sensitive skin
- Do not contain parabenes or any mineral oils

HYDRO CELL

ACTIVE INGREDIENTS HYDRO-ACTIV-FACTORS

Gulfstream Water

Very precious sea salt

Diminish irritations and inflammations



HYDRO CELL



ACTIVE INGREDIENTS HYDRO-ACTIV-FACTORS

Crithmum Maritimum (stem cell of the sea fennel)

Plant cells of the sea fennel

They promote the regenerating properties of the skin



HYDRO CELL



ACTIVE INGREDIENTS HYDRO-ACTIV-FACTORS

Biofa (high quality algae extract)

By adding the Gulfstream water,
the algae extract is activated to 100%.



Vitalising

Detoxifying

Moisture Instant and Depot effect

High Skin protection

Cleaning



PRO ACTIVE CLEANSER

clarifying & invigorating



DEEP CLEANSING LOTION

caring & protecting



REFRESHING FACE TONIC

clarifying & balancing

HYDRO CELL

Deep Cleaning

SKIN REFINING PEELING

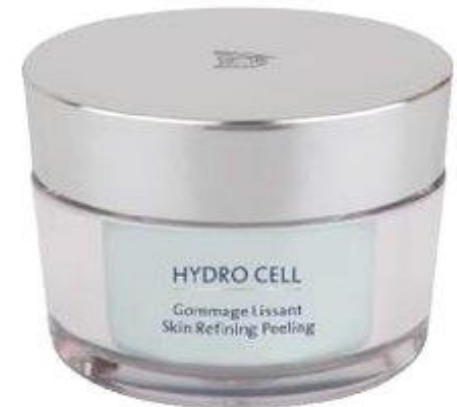
Gentle exfoliating cream

Skin types:

For all skin types,
clarifying, also for impure and sensitive skin.

Values & benefits:

- Gently removes dead skin cells, impurities and dirt
- Pore-deep cleansing and clarifying of the skin
- Stimulates cell regeneration
- Effective skin's surface smoothing
- Detoxifying: Cure-application 2 times a week



Deep Cleaning



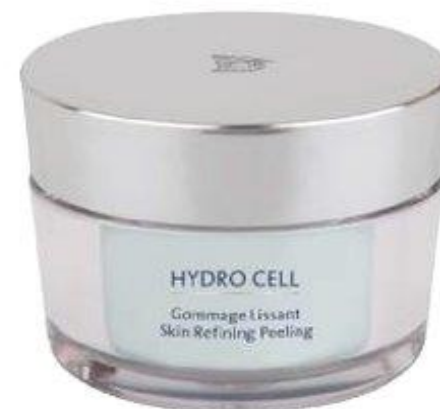
SKIN REFINING PEELING

Gentle exfoliating cream

ACTIVE INGREDIENTS **Keratoline**

The enzymatic activity removes dead skin cells thus smoothing the skin's surface and promoting cell regeneration.

Detoxifying



HYDRO CELL

Specialcare



HYDRATING LIFTING SERUM

+ Hyaluronic
boosting & healing promotion



MOISTURE INTENSE COMFORT MASK

+ Sweetgrass
moisture depots

HYDRO CELL

Eye care



AGE DEFENSE EYE CREME

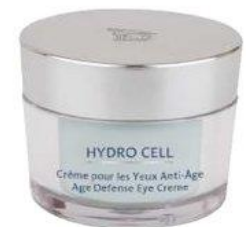
Smoothing eye cream with instant effect

Skin types:

For all skin types.

Values & benefits:

- Intensive moisturising of the sensitive eye area
- Effectively diminishes lines caused by dryness
- Reduces dark circles and swelling around the eyes
- Suitable for customers wearing contact lenses
- Firming and redefining the eye contours



HYDRO CELL

Eye care

AGE DEFENSE EYE CREME

Smoothing eye cream with instant effect

ACTIVE INGREDIENTS Eye

Haloxyl

Peptidmix,

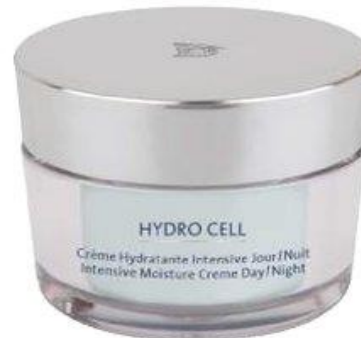
- Strengthens the tonus of the eye area
- Allows the removal of those pigments that are responsible for the discoloration of dark eye circles
- Responsible are anti-inflammatory properties
- Stimulates the micro-circulation to swollen eyes

24h Care



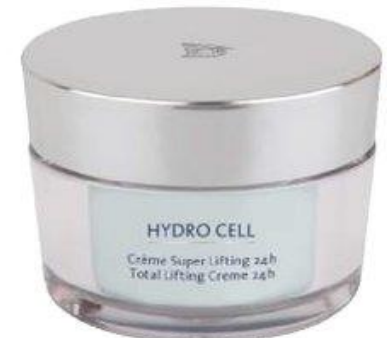
MOISTURIZING BEAUTY
EMULSION

SOFT



INTENSIVE MOISTURE CREME
DAY/NIGHT

MEDIUM



TOTAL LIFTING CREME
24h

INTENSIVE
+ 2 Lifting ingredients

HYDRO CELL

Conclusion



HYDRO CELL

The ideal anti-aging care entry for all skin types.

Intense moisture care
and fresh fragrance experience.



MONTEIL
PARIS

FEEL SATIN

Concept

LUXURIOUS
INGREDIENTS



PIONEERING
SCIENCE



IMMEDIATE & SUSTAINABLE
RESULTS


MONTEIL
PARIS

FEEL SATIN

THE EVOLUTION

IN THE WORLD OF
ANTI-AGING COSMETICS

**Multi-dimensional, global anti-aging
skin care with immediate effect –**
doubly effective in the battle against
the first visible signs of skin aging

**More effective results
through intelligent**

2 PHASE ACTIVATION



Immediate effect



Long-term effect



MONTEIL
PARIS



FEEL SATIN

THE CONCEPT AND ITS SPECIAL FEATURE



All recipes are based on the **NEW SKIN COMPLEX**:

- A unique, coordinated combination of active agents made up of modern **high-performance ingredients** and selected luxurious raw materials.
- Effective anti-aging formula stimulates several vital skin functions and thereby counters all the factors which cause skin aging.
- The perfect concentration of active ingredients used produces a **sybiotic effect in the different layers of the skin at the same time.**
- The NEW SKIN COMPLEX has a **multi-dimensional** effect, by stimulating metabolism and cell regeneration, supplying the skin with the optimum levels of essential nutrients and stimulating the formation of collagen and elastic, providing intensive and deep down moisturisation as well as protecting against environmental effects.

The skin regains greater tonicity and elasticity and appears firmer, smoother and more elastic. The first creases disappear, the contours of the face appear more defined and even.



FEEL SATIN



New Skin Complex

FEEL SATIN

PURE LUXURY FOR IMMEDIATE SMOOTHNESS AND SKIN FEELS SILKY-SOFT



HYDROLYSED SILK



Silk fibres consist of long-chain fibroin protein molecules (around 75%) and sericin (around 25%) and, as with any protein, ultimately amino acids.

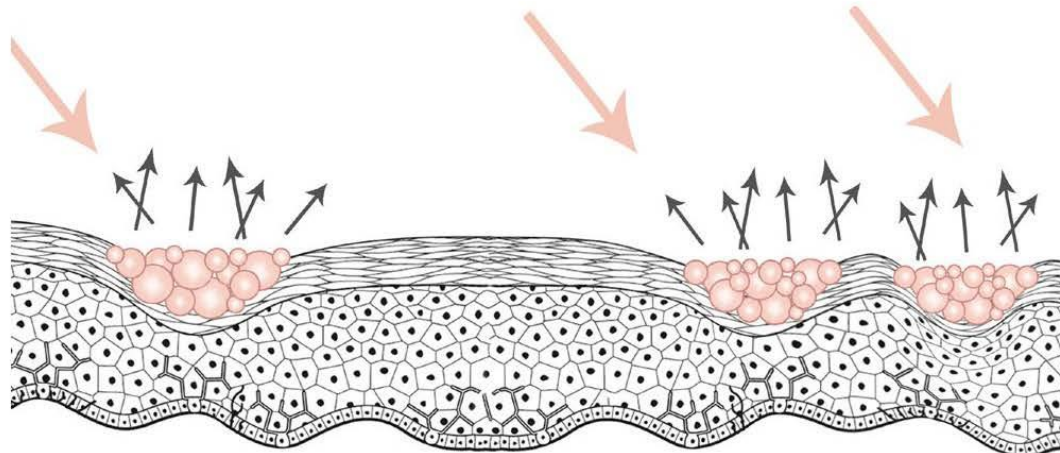
Hydrolysed silk is a partially hydrolysed product which is derived from silk fibres.

- The soluble silk forms a protective layer on the skin and helps to protect against environmental effects and prevent loss of moisture.
- Moisturises and regulates the balance of water in the skin.
- Makes the skin supple, has a balancing effect and gives a smooth, wrinkle-free complexion
- Gives the skin a pleasant, silky-soft feel

THE SOFT-FOCUS WITH IMMEDIATE EFFECT AGAINST WRINKLES



SOFT RETOUCH



THE SOFT-FOCUS WITH IMMEDIATE EFFECT AGAINST WRINKLES

SOFT RETOUCH

Through its spherical shape, silica disperses incoming light and thereby ensures a translucent, natural finish with Soft Retouch effect. On top of that the skin feels velvety soft.

- Improvement in appearance through light diffusion
- Gives the skin a pleasant feel
- Bright complexion/glow



FEEL SATIN

SUPERFOOD NUTRIENTS FOR INTENSIVE CELL REGENERATION

CHIA SEED EXTRACT

Chia seeds are one of the most popular superfoods and are rich in proteins, dietary fibres, amino acids, calcium, potassium, Omega 3 and 6 fatty acids and antioxidants.

They swell when combined with water and ensure that water is retained.

- For smooth, healthy skin
- Provides the skin with essential nutrients (skin nutrition)
- Has a moisturising effect



SUPERFOOD NUTRIENTS FOR INTENSIVE CELL REGENERATION



BIRCH SAP

Completely natural raw material made from real birch sap. Birch sap is a bioactive liquid which contains vitamins and other biologically active substances.

These include: fructose, glucose, sacharose, potassium, calcium, magnesium, manganese, zinc, sodium, iron, fruit acids and vitamin C, free amino acids, enzymes and essential oils.

- Stimulates cell regeneration
- Improves the skin tone
- Storage of moisture in the stratum corneum

PURE MOISTURE FOR FOR FIRMNESS AND ELASTICITY



HYALURONIC ACID:

The most important function of hyaluronic acid is that it transports and retains water. Due to its tremendous capacity to retain water, hyaluronic acid is a highly-efficient moisturiser.

LONG CHAIN/HIGH MOLECULAR HYALURONIC ACID

- Storage of water in the skin
- Forms a film on the surface of the skin and thereby protects it against drying out
- Provides intensive moisturisation
- Maintains the elasticity of the skin
- Ensures rapid improvement in the appearance of the skin and gives a fresh complexion

SHORT CHAIN/LOW MOLECULAR HYALURONIC ACID

- Penetrates into the deeper layers of the skin due to its small molecule size
- Through its tremendous capacity to retain water, it transports moisture into the layers of the skin.
- Reduces long-term creases caused through dryness
- Leaves the skin looking supple and firm

THE POWER PEPTID FOR A VISIBLY DEMONSTRABLE ANTI-WRINKLE EFFECT



Matrixyl™ 3000*

Matrixyl™3000 contains the matrikines Pal-GHK and Pal-GQPR, which have a synergy effect in the repair of age-related skin damage.

Matrikines are carrier peptides which can regulate cell activity, by interacting with their specific receptors.

They activate specific genes which contribute to the regeneration of an extracellular matrix and cell proliferation. Mechanisms which decline with increasing age.

- Activation of the skin's own repair processes
- Visible smoothing of wrinkles
- Improvement of the tonicity and elasticity



NOT APPLIED



AFTER 2 MONTHS

*registered trademark of Sederma GmbH

FEEL SATIN



Superfood Complex

FEEL SATIN

SUPERFOOD COMPLEX

LIPID ACTIVE INGREDIENT
FORMULA

Contains very high level of proteins,
vitamins and minerals

**MORINGA
OIL**

**MACADAMIA
NUT OIL**

Has an exceptional effect in
smoothing the skin, softening
and regenerating

**AVOCADO
OIL**

Promotes cell regeneration and smooths
the surface of the skin



MONTEIL
PARIS

FEEL SATIN

OTHER ACTIVE SUBSTANCES

SOYA OIL

Regulates the cornification process and has excellent skin moisturisation properties

SHEA BUTTER

Has high antioxidative potential and has a stimulating effect on cell structure and cell formation.

ALOE VERA

Locks in moisture and stimulates repair processes

MENTHYL LACTATE

Gives a gently, long-lasting cooling effect and an immediate, pleasant freshness on the skin.



MONTEIL
PARIS



FEEL SATIN

INSTANT REFINE DAY CREME

Global anti-aging with immediate soft-focus effect



IMMEDIATE EFFECT:

- Immediate reduction of fine lines and creases
- Gives an even complexion and makes the skin feel silky-soft



LONG-TERM EFFECT:

- Stimulates the metabolism and cell regeneration
- Provides the skin with essential nutrients and promotes the formation of collagen and elastin
- Fills up moisture deposits and protects against drying out
- Effective protection against environmental effects
- Helps to sustainably reduce wrinkles



INTENSIVE REFINE Night CREME

Global anti-aging with superfood supply of nutrient



IMMEDIATE EFFECT:

- The complexion immediately looks smoother
- Leaves the skin feeling nourished and silky-soft



LONG-TERM EFFECT:

- Intensive regeneration through essential superfood nutrients
- Stimulates deep down synthesis between collagen and hyaluron
- Activates repair processes, stimulates the metabolism and cell regeneration
- Provides long-lasting moisturisation
- Visibly reduces the signs of aging on the face
- Counters premature skin aging



LIFT SENSATION EYE SERUM

Highly-concentrated NEW SINN Power for youthful radiance



IMMEDIATE EFFECT:

- Has an invigorating effect and provides intensive moisture to the skin
- Refines, smooths and plumped up the skin structure.



LONG-TERM EFFECT:

- Stimulates the metabolism deep down and cell regeneration
- Provides the skin with nutrients and activates the formation of collagen and elastin
- Provides intensive and long-lasting moisture
- Effective protection against environmental effects
- Visibly reduces the signs of skin aging
- For a reduction in the depth of wrinkles



Conclusion

GOOD REASONS FOR FEEL SATIN

- Global anti-aging skin care to reduce the initial visible signs of skin aging
- 2-phase effect with immediate and sustainable effect
- Effectiveness of the active substances has been scientifically proven
- Made in Germany quality
- Free of paraffin, PEG, parabens and silicon
- Anti-Aging through intelligent, valuable ingredients to improve tonicity and elasticity
- Luxurious textures with silk for a sensual skin care experience and with visible and noticeable effect
- Intensive sources of active ingredients for the stimulation of the synthesis between collagen and hyaluron
- With superfood extracts to balance initial deficiency of nutrients
- Anti-pollution effect



MONTEIL
PARIS

REGENERATIVE ANTI-AGING

WITH PROCGEN COMPLEX



ACTI-VITA

ACTI-VITA Concept

Regenerative anti-aging, Highly effective **regenerating skin care** especially for dry and demanding skin.

Unique ProCGen complex protects the skin against adverse conditions, counteracts the aging process of the skin and retains its natural moisture content.

The connection with 24k Gold revitalizes the complexion, due to a unique reflection, gives a radiant expressive power of the skin.

A special **multi-vitamin complex** promotes metabolism and cell regeneration.

The **vegetable complex** of essential oils supports the skin's elasticity and sustains suppleness.

ACTI-VITA Facts

- Effectiveness of the active ingredients scientifically proven
- Products dermologically tested
- High quality ingredients
- Quality Made in Germany
- Free of paraffins and parabens
- Unique ProCGen-Complex to protect the skin from environmental damage
- Against signs of skin aging

ACTI-VITA



Regenerative anti-aging

- Regeneration
- Protection
- Collagensynthesis
- Stabilization NMF factor
- Hormonal skin balance
- Fresh skin & glowing skin complexion
- Nutricosmetics

ACTI-VITA



ACTIVE INGREDIENTS **ProCGen** protecting complex

Pepha® Protect, a cell-protecting and DNA protection factor.

- Forms a cellular protective shield.
- Effectively prevents damage to the genes of the dermal cells.

Stabilized Vitamin C

- Has a rejuvenating effect on the skin since it promotes the production of skin-tighteners “collagen and elastin”. Reduces excess pigmentation and creates a more even complexion.

Genistein, an Isoflavon / phytosterol derived from the soy bean.

- Genistein can penetrate deeply into the skin layers.
- Is effective against free radicals and protects the skin against cell damage.
- Promotes the division rate of the connective tissue cells.
- Stimulates collagen production and promotes the hormonal balance of the skin.
- Is an effective Anti- Aging ingredient.

ACTI-VITA



ACTIVE INGREDIENTS multi-vitamin vitality-complex

MULTI -VITAMIN COMPLEX = “PURE VITAMIN-POWER”

- | | |
|----------------------|-------------------------------|
| Pro-Vitamin A | (sour cherry) |
| Vitamin A + E | (anti-oxidant, UV protection) |
| Vitamin F | (two essential fatty acids) |

This complex bursting with vitamins intensively moisturizes and nourishes the skin.

It fights free radicals and prevents irritation of the skin.

All vitamins are encapsulated – hence stabile and active!

ACTI-VITA



ACTIVE INGREDIENTS vegetable care-complex

Jojobaoil

Makes the skin supple and has a soothing effect. Moisturises, protects and smoothes the skin. Increases the skin's ability to retain moisture.

Wheat Germ Oil

Counteracts the skin's dryness and improves elasticity.

Almond Oil

High level of skin care, softening properties. Contains vitamin A, B and E and is rich in minerals.

Special care



GOLD ProCGen SOFTENING
LOTION
+ Hyaluronic & 24K Gold
Boosting & „Active ingredient slide



GOLD ProCGen
SERUM
+ Hyaluronic, 24K Gold & Peptide
lifting & cure-treatment

24h Care



ULTRA RICH CRÈME ProCGen
Highly effective care for
face // 24h
ProCGen Complex
Shea butter / Panthenol



NECK TREATMENT ProCGen
Highly effective care for
neck and décolleté
ProCGen Complex
Panthenaol / Allantoin

Conclusion

ACTI-VITA ProCGen

A unique anti-aging concept for regenerative anti-aging.

The cell metabolism is stimulated – the highly effective formulations provide sophisticated and mature skin up to the depth and stimulate the collagen formation.

The combination with 24k gold revitalizes the complexion and gives the skin's radiant expressive power.



24H ANTI-AGING

WITH MULTIFACETED
ANTI-AGING EFFECT



LA CRÈME UNIQUE



MONTEIL
PARIS

LA CRÈME UNIQUE

LA CRÈME UNIQUE – anti-aging PLUS - Concept

The potential of nature is unique and fascinating. Inspired by the natural repair and supply properties of nature, we have developed the highly effective “La Crème Unique” face care range - every care product contains an exclusive active agent from a special plant for effective beauty care. The special features:

During the last few years there have been major new developments in technical procedures and bio-technological methods to grow plants and isolate their ingredients.

This means that by using plant stem cell cultures, the potential of the active agents of rare or protected plants can also be collected sustainably and in a way that saves resources.

This means that very effective active agents with a high level of purity can be provided to the cosmetics industry. MONTEIL uses precisely such exclusive plant preparations in the La Creme Unique range to achieve optimal beauty results. The power of plants for a precious anti-aging experience.

LA CRÈME UNIQUE

LA CRÈME UNIQUE

LA CRÈME UNIQUE – anti-aging PLUS - 24h cream

- Effectiveness of active ingredients scientifically proven
- Products are dermatologically tested
- High quality ingredients
- Prix de L'INNOVATION 2010
- Quality Made in Germany
- High protection against oxidative stress
- Intensive reduction in over-pigmentation and skin redness
- Stimulation of collagen synthesis and lowering of collagen depletion

LA CRÈME UNIQUE

LA CRÈME UNIQUE – anti-aging PLUS - 24h cream

Evidence that the active agent complexes already have an excellent anti-aging effect after 28 days

- Improvement in skin elasticity **+10.8 %**
- Improvement in skin smoothness **+8.2 %**
- Reduction in wrinkle depth **-15.3 %**

LA CRÈME UNIQUE

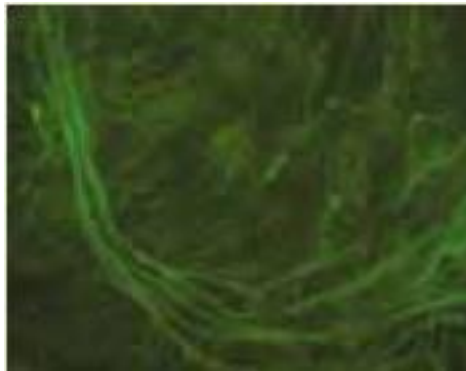


LA CRÈME UNIQUE – anti-aging PLUS – 24h cream

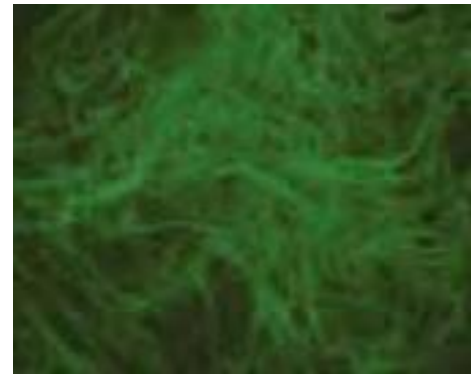
ACTIVE AGENT SYSTEM BEFORE / AFTER EFFECTS

Collagen:

- ✓ Stimulation of collagen-I-synthesis by **+170%**
- ✓ Lowering of collagen depletion (collagenase) by **43%**.



Collagen content
beforehand



Collagen content
afterwards

LA CRÈME UNIQUE



LA CRÈME UNIQUE – anti-aging PLUS – 24h cream

ACTIVE AGENT SYSTEM BEFORE / AFTER EFFECTS

Melanin:

- ✓ Reduction in melanin content of melanosomes by **45%**.



hyper-pigmentation
beforehand



Hyper-pigmentation
afterwards

LA CRÈME UNIQUE



LA CRÈME UNIQUE – anti-aging PLUS – 24h cream

ACTIVE AGENT SYSTEM BEFORE / AFTER EFFECTS

Haemoglobin:

✓ Reduction in vessel expansion by **44%**.



vessel expansion
beforehand



vessel expansion
afterwards

LA CRÈME UNIQUE



ACTIVE INGREDIENTS ANTI AGING PLUS – BETTER CONNECTIVE TISSUE

Chromocare™

Plant-based extract from St. Paulswort and the Dong Ling-Cao tree. Stimulates collagen synthesis, reduces over-pigmentation and skin redness.

CellActive®form

Plant-based active agent complex from Mangosteen, quince seed extract and Essential Cell Boost Factor. Anti-oxidative, anti-inflammatory properties, strengthens the firmness of the skin, improves skin elasticity.

LA CRÈME UNIQUE



ACTIVE INGREDIENTS

PROTECTION AND REGENERATION

Teak extract

Teak extract gives the skin back its strength. The skin is strengthened and becomes resistant. The extract also has an astringent and anti-microbial effect.

DN-Age®

The UV-protection supports the natural repair systems of the skin and provides visible protection against skin aging caused by sunlight.

LA CRÈME UNIQUE

Precious, regenerating 24-hour cream



Complexion:

For all skin types, particularly for dry skin requiring regeneration and atrophic skin. Very well-suited for facial erythrosis and pigment changes.

Application:

Apply in the mornings and evenings after cleansing to the face and neck with gentle upwards movements.

Effect & benefits:

- Refines and smooths, substantial improvement in the skin structure
- Regenerates and calms, higher protection against oxidative stress
- Visibly reduces the signs of skin aging
- Reduction in skin pigmentation and redness
- Even and smooth complexion, tautened facial contours



LA CRÈME UNIQUE



PEELING

TIMELESS BEAUTY. *Ever Now.*

PEELING



Chemical exfoliants are a key part of a skincare routine.

With their multi-active effect, they address the formation and signs of blemished adult skin: the keratolytic AHA/BHA/PHA products intensively clarify the skin and activate regeneration processes.

With long-term use, they can thus smooth lines and wrinkles and refine the skin's appearance. The results are evident in noticeably smooth skin and a radiant, fresh complexion.

PEELING



Exfoliants are a key part of a skincare routine.

In addition to improving the health of the skin, they also gently remove dead skin cells and prepare the skin for the skincare products to follow.

The use of a chemical exfoliant that is not rinsed off can make a significant difference – for all skin types.

Unlike a coarse scrub, a chemical exfoliant gently removes dead skin cells and actively counters various skin conditions.

Integrate a chemical exfoliant into the skincare routine – after cleansing and before applying the face cream. Enjoy radiant, smooth, even and well-moisturised skin.

KERATOLYTIC AHA WATER

Alcoholic solution with fruit acid

SKIN CONDITION:

Ideal for oily, large-pored skin. For adult, blemished and acned skin.

For skin that is prone to blemishes due to sun exposure.

Skin that suffers from hormonal fluctuations, tiredness and stress, which manifests itself through blemishes.

ACTIVE INGREDIENTS:

- 8% glycolic acid
- 15% alcohol

7,7 % AHA



KERATOLYTIC



DAILY



CHEMICAL
PEEL



NIGHT
CARE

KERATOLYTIC AHA WATER

Alcoholic solution with fruit acid

HOW TO USE:

Apply in the evening to the face after cleansing using a cotton pad.

For regular use OR as a course of treatment in the case of blemishes. Do not rinse off, avoid the eye area.

Ideal as skincare during a MONTEIL fruit acid treatment course.

7,7 % AHA



KERATOLYTIC



DAILY



CHEMICAL
PEEL



NIGHT
CARE

KERATOLYTIC AHA WATER

Alcoholic solution with fruit acid

EFFECTS & BENEFITS:

- Has a disinfecting and anti-inflammatory effect
- Removes dead skin cells thanks to its keratolytic effect
- Smooths the skin
- Effectively cleanses clogged pores
- Regulates sebum flow
- Refines the pores
- Ideal as a course of treatment

7,7 % AHA



KERATOLYTIC



DAILY



CHEMICAL
PEEL



NIGHT
CARE

REFINING AHA FLUID



Refining fluid with fruit acid

SKIN CONDITION:

Ideal for normal to dry skin. For adult, blemished and acned skin.

For sun-stressed skin; for skin that is prone to blemishes due to sun exposure. Skin that suffers from hormonal fluctuations, tiredness and stress, which manifests itself through blemishes.

ACTIVE INGREDIENTS:

- 8% glycolic acid
- 2% citric acid



TIMELESS BEAUTY. *Ever Now.*

REFINING AHA FLUID



Refining fluid with fruit acid

HOW TO USE:

Preferably apply the nourishing fluid in the evening to the face after cleansing and massage in gently. Avoid the eye area. It is normal to feel a slight tingling at first when using the product; this decreases with longer term use as the skin becomes accustomed to it.

Ideal as skincare during a MONTEIL fruit acid treatment course.

TIP:

Combine Keratolytic AHA Water with Refining AHA Fluid for stubborn skin problems.



TIMELESS BEAUTY. *Ever Now.*

REFINING AHA FLUID



Refining fluid with fruit acid

EFFECTS & BENEFITS:

- Exfoliation effect through desquamation of keratinocytes
- AHAs remove dead and hardened skin cells
- Stabilises the acid mantle
- Keratolytic effect boosts skin regeneration
- Prevents sebum blockages by opening the pores
- Balances out excess sebum production
- Smooths the skin, making it softer and less lacklustre



TIMELESS BEAUTY. *Ever Now.*

CLARIFYING BHA & PHA LIQUID



Liquid with fruit acid to improve the skin

SKIN CONDITION:

Ideal for combination skin. For adult, blemished & reddened skin.

For dehydrated skin and rough skin areas.

ACTIVE INGREDIENTS:

- 1% salicylic acid (BHA)
- 3% gluconolactone (PHA)

1 % BHA & 3 % PHA



CLARIFYING



DAILY



CHEMICAL
PEEL



NIGHT
CARE

TIMELESS BEAUTY. *Ever Now.*

CLARIFYING BHA & PHA LIQUID



Liquid with fruit acid to improve the skin

HOW TO USE:

Apply in the evening to specific areas of the face after cleansing using a cotton pad. For regular use OR as a course of treatment in the case of blemishes and rough skin areas.

1 % BHA & 3 % PHA



CLARIFYING



DAILY



CHEMICAL
PEEL



NIGHT
CARE

TIMELESS BEAUTY. *Ever Now.*

CLARIFYING BHA & PHA LIQUID



Liquid with fruit acid to improve the skin

EFFECTS & BENEFITS:

- Removes dead skin cells thanks to its keratolytic effect
- Improves the appearance of blemishes
- Reduces keratinised, rough and flaky skin
- Gentle chemical exfoliation
- Ideal as a course of treatment
- Smooths the skin, making it softer and less lacklustre

1 % BHA & 3 % PHA



CLARIFYING



DAILY



CHEMICAL
PEEL



NIGHT
CARE

TIMELESS BEAUTY. *Ever Now.*



ELIXIR WITH WOW EFFECT: ELIXIR METAMORPHOSE

EXTRA CARE & ACTIVE
INGREDIENTS WITH IMMEDIATE
AND LONG-TERM EFFECTS

ÉLIXIR MÉTAMORPHOSE

HIGHLY EFFECTIVE VITAMIN C TREATMENT



Innovative anti-wrinkle serum for restructuring the skin

ELIXIR METAMORPHOSE Highly Effective Vitamin C Treatment with 79% pure L-ascorbic acid reduces the depth of lines and wrinkles and increases the skin's radiance. When activated with Activating Elixir (2-3 pipettes), the 3D matrix of the vitamin C molecule transforms into a highly effective anti-ageing serum that smoothes lines and wrinkles, improves skin elasticity and protects against damage caused by free radicals.



ÉLIXIR MÉTAMORPHOSE

HIGHLY EFFECTIVE VITAMIN C TREATMENT



3D Matrix Vitamin C Molecules

- 79 % pure L-Ascorbic Acid
- 3D-matrix in stable bead format.
- Transforms into a high-active serum upon activation with High Effective Activating Elixir
- Enriched with Jojoba oil for light moisturization



ÉLIXIR MÉTAMORPHOSE

HIGHLY EFFECTIVE VITAMIN C TREATMENT



ASCORBIC ACID: THE QUEEN OF VITAMIN C

Of all forms of Vitamin C, Ascorbic Acid – also known as L-Ascorbic Acid – is the best researched when it comes to its nourishing properties for the skin.

Ascorbic Acid in high concentrations (15% or more) is ideal for tackling even the most strong skin problems.



ÉLIXIR MÉTAMORPHOSE

HIGHLY EFFECTIVE VITAMIN C TREATMENT



High Effective Activating Elixir

- Glycerin and Sodium Lactate: stabilising the NMF and therefore responsible for skin moisture
- Lactobacillus Ferment: known for their ability to reproduce antimicrobial peptides



ÉLIXIR MÉTAMORPHOSE

HIGHLY EFFECTIVE VITAMIN C TREATMENT



Scientific Data:

- **-33%** Reduction of fine lines and wrinkles after 8 weeks (PRIMOS)¹
- **-27%** Reduction of wrinkle depth after 8 weeks (PRIMOS)¹
- **+31%** Increase of skin elasticity after 8 weeks (Cutometry)¹
- **+53%** Increase in skin purity after 8 weeks¹
- **+57%** Increase in overall skin condition after 8 weeks¹
- **+289%** Increase of skin antioxidative power²



PROFESSIONAL INSTITUTE COSMETICS FOR HOME USE

HIGHLY EFFECTIVE AMPOULES
AND SERUMS

PROFESSIONAL SOLUTIONS AMPOULES



CONCEPT

Ampoules are characterized by their particularly high concentration of active ingredients and light texture.

Due to their fluid consistency, they can penetrate quickly and easily into the deeper skin layers of the epidermis and affect as driving force more intensively than creams.

Depending on the stage of life, they can be used by any customer and are also suitable for all skin types. Ampoules can improve all skin conditions and problems quickly and effectively and therefore they are mainly used as "problem solvers" in the following areas:

- Anti-Aging & reducing wrinkles
- Moisturing & skin freshness
- Pigmentation spots & vascular problems
- Large pores & impurity

PROFESSIONAL SOLUTIONS AMPOULES

CONCEPT



MONTEIL
PARIS

BASIS AND CARRIERS

3way Hyaluronan

Moisturizes skin surface, epidermis and dermis, inhibits free radicals, improves the skin surface and supports regeneration activity. Combined active substances can penetrate deeper into the skin through the carrier function and act more effectively.



PROFESSIONAL SOLUTIONS

PROFESSIONAL SOLUTIONS



Serums/Ampoules MOISTURE:



HYALURONIC Ampoule

highest hyaluronic concentration
moisture & anti-aging



HYDRO ACTIVE Ampoule

+ HYDRO CELL active ingredients
moisture & freshness

3-way Hyaluronan -basis and active ingredient carrier!

PROFESSIONAL SOLUTIONS



Serum/Ampoules SKIN CLARIFICATION:



ANTI-ACNE Ampoule

+ 5 % Panthenol, Oleanolacid & NDGA acid
cleans & clears



DEEP CLEAN Ampoule

+ Malakide & Venuceane
detox & anti-pollution

3-way Hyaluronan -basis and active ingredient carrier!

PROFESSIONAL SOLUTIONS



Serum/Ampoules SKIN BALANCING:



COUPEROSE Serum

+ Ambora, Haloxyl & Rutin

Reduces vascular dilations and
prevents new formation

3-way Hyaluronan -basis and active ingredient carrier!



SOS Serum

+ 5% Panthenol & Tigergras

acute care



INTELLIGENT TREATMENTS

FOR YOUR BEAUTY

PROFESSIONAL PRODUCTS



MONTEIL
PARIS

PROFESSIONALS ACTIVE INGREDIENTS BAR

4-WAY HYALURONIC SERUM

Application:

Moisture, anti-aging, boosting, after sun

Active Ingredients:

4 way Hyaluronic

Application with device:

Mesoporation, Ultrasound, Galvanisation MINUS, Radiofrequency



PROFESSIONAL PRODUCTS



MONTEIL
PARIS

PROFESSIONALS ACTIVE INGREDIENTS BAR

4-WAY HYALURONIC SERUM

ACTIVE INGREDIENTS 4- WAY HYALURONIC SERUM

High molecular hyaluronic acid

Remains in the upper skin layers for immediate moisture. Strengthens the skin barrier, protection against harmful environmental influences.

Low molecular hyaluronic acid

Penetrates into the deeper skin layers for long-term moisturising of the skin. Improves the skin structure for greater elasticity.

Encapsulated hyaluronic acid

Transports high molecular HS into the deeper skin layers, increases skin firmness and elasticity.

Low molecular hydrolyzate + sodium PCS

Intensive moisture binding



PROFESSIONAL PRODUCTS

PROFESSIONALS

Massage creme:

HYDRO CELL MOISTURIZING MASSAGE CREME

Light, moisturizing massage creme

Active Ingredients:

Bees wax, Plant neutral oil, Gulfstream water,
Crithmum Maritimum, Biofa



MONTEIL Treatment Concept

MONTEIL

BEAUTY

Treatments

manual

treatments

MONTEIL

DERMAEXPERT

Treatments

Special treatments with

equipment and fruit

acid



MONTEIL
PARIS



LUXURY BEAUTY CODE

ANNIVERSARY EDITION



PROFESSIONAL PRODUCTS



LUXURY BEAUTY CODE

ANNIVERSARY EDITION

*Stop time?
No - motivate the skin
instead!*

Luxury Beauty Code

The human body has its own biological rhythm that naturally controls the body's activity and resting phases.

This periodic rhythm is controlled by the **so-called clock gene**.



Luxury Beauty Code

clock genes ???

are genes that regulate sleep and wakefulness in humans.

They determine the rhythm of our internal biological clock and are jointly responsible for whether we are early birds or night owls.



Luxury Beauty Code

Today's modern lifestyle can have a massive impact on this natural rhythm!

The modern lifestyle:

- often characterized by an irregular daily routine
- very short sleep phases
- low stress regeneration

Result:

- weakened clock genes
- indistinct day and night rhythm



Luxury Beauty Code

Disturbances of the biological rhythm lead to skin imbalances, which then show up in an impaired skin barrier function and lead to rough, sensitive and dry skin.

Result:

- Impaired skin barrier function
- Sensitivities & rough skin
- Dry skin
- Insufficient skin freshness
- Increased aging process!

It is therefore important to compensate for deficits and to support the natural processes of the skin as quickly as possible.



Luxury Beauty Code

The solution!

We have found an active ingredient that counteracts these skin conditions: the "Chardonnay grape extract" has the power to counteract the imbalance in the skin and the accompanying - premature skin aging process.



Luxury Beauty Code

Chardonnay grape extract

Studies have shown that the use of the active ingredient can significantly improve the quality of the skin.

- Increase in skin moisture
- Increased exfoliation activity of the skin
- Improvement of the skin's barrier function at night
- Redness and rough skin conditions are counteracted

The active ingredient helps busy people regain the natural healing power of their skin by regenerating the weakened genetic skin rhythm.



Luxury Beauty Code

Other active ingredients // Cream & Serum:

LONG CHAIN / HIGH MOLECULAR HYALURONIC ACID

- Retention of moisture in the skin
- Forms a film on the surface of the skin and prevents it from drying out
- Intensive moisturizing
- Keeps the skin elastic
- Ensures a quick improvement of the complexion and gives a fresh complexion



Luxury Beauty Code

Other active ingredients // cream:

GRAPE SEED OIL

Grapeseed oil is obtained from the crushed seeds of the grape (*Vitis vinifera*). It is considered to be exceptionally antioxidant and skin protective.

Grapeseed oil is very well absorbed by the skin.

ARGAN OIL

The precious argan oil is an excellent oil for dry and chapped skin with antioxidant, skin-protecting properties.



Luxury Beauty Code

Other active ingredients // cream:

COCOA BUTTER

The butter is not only the melting component in chocolate; it ensures that creams melt gently and evenly on the skin. One of the main characteristics of cocoa butter is that it takes good care of dry skin and makes it supple again.

ACTIVE INGREDIENTS ALGINE AND PAPAYA EXTRACT

This effective mixture of active ingredients ensures a fresher appearance, a high water absorption capacity and supports the moisture content of the skin. Papaya supports the exfoliation process of the skin and helps remove old skin cells.



Luxury Beauty Code



Ref. 251156

50 ml



Ref. 251158

30 ml





Many thanks!



MONTÉIL
PARIS

TIMELESS BEAUTY. *Ever Now.*