



#### Cutting & Scoring:

- Pale Papaya - 11" x 4 1/4", score and fold at 5 1/2"
- Basic White - 4" x 5 1/4" & scrap
- Vellum Cardstock - scrap

#### Instructions:

- Score Basic White layer at 1" increments vertically and horizontally.
- Stamp floral and leaf images over entire layer using Pale Papaya Ink for the solid floral image, Pumpkin Pie Ink for the detailed floral image and Old Olive Ink for the leaves.
- Adhere to card front.
- Stamp sentiment on Basic White scrap with Memento Tuxedo Ink. Die cut with smaller of the two label dies. Die cut larger coordinating label die on Vellum Cardstock scrap.
- Stamp bottom right corner of Basic White label with Pale Papaya Ink and solid floral image stamped off once for a lighter image. Stamp the detailed floral image with full strength Pale Papaya Ink.
- Adhere Basic White label to Vellum Cardstock label. Add about 4 1/2" of Pale Papaya 1/2" Faux Velvet Ribbon to card front where shown with Mini Glue Dots. Add labels with Stampin' Dimensionals.
- Embellish with Iridescent Pastel Gems.
- Stamp inside as desired.

# Fuax Tile with Two Tone Flora

Tami White  
tami@stampwithtami.com  
www.stampwithtami.com



Two-Tone Flora  
Photopolymer  
Stamp Set -  
160844



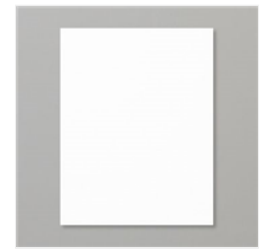
Two-Tone Flora  
Bundle (English) -  
160414



Something Fancy  
Cling Stamp Set  
(English) - 160416



Something Fancy  
Bundle (English) -  
160425



Basic White 8-1/2"  
X 11" Cardstock -  
159276



Pale Papaya 8-  
1/2" X 11"  
Cardstock -  
155668



Vellum 8-1/2" X  
11" Cardstock -  
101856



Tuxedo Black  
Memento Ink Pad -  
132708



Pale Papaya  
Classic Stampin'  
Pad - 155670



Old Olive Classic  
Stampin' Pad -  
147090



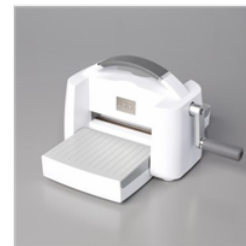
Pumpkin Pie  
Classic Stampin'  
Pad - 147086



Iridescent Pastel  
Gems - 160429



Pale Papaya 1/2"  
(1.3 Cm) Faux  
Velvet Trim -  
160535



Stampin' Cut &  
Emboss Machine -  
149653



Paper Trimmer -  
152392



Multipurpose  
Liquid Glue -  
110755



Stampin'  
Dimensionals -  
104430



Mini Glue Dots -  
103683