

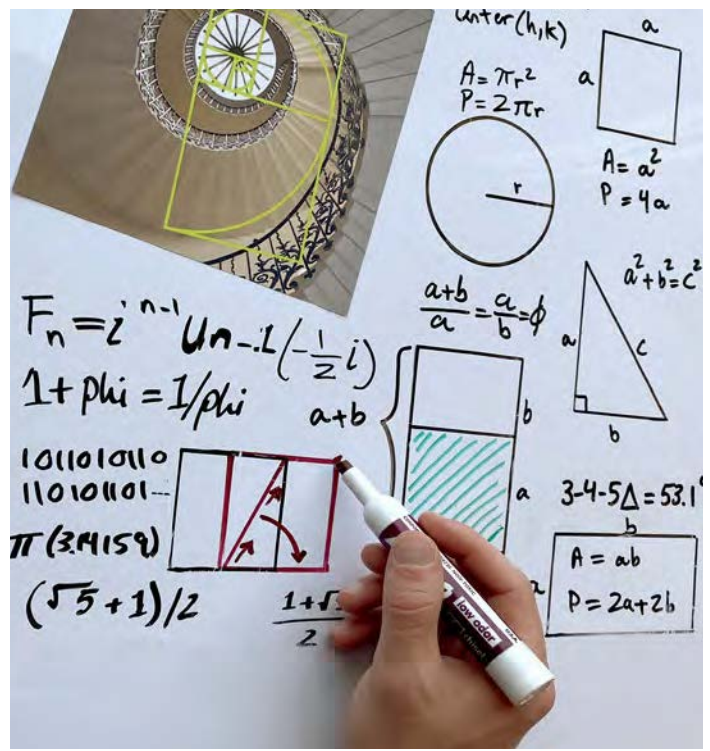


GET CREATIVE AND COLLABORATE

Bring your creativity to life with WriteWalls' full range of dry erase products!

With everything from durable and easy to maintain dry erase wallcoverings to the easiest to install single component dry erase paint, WriteWalls has your dry erase needs covered. Completing your space is easy with our full assortment of trims and accessories designed to complement any installation.

Every project has room for dry erase, and no dry erase project is complete without WriteWalls!



Magnetic Solutions 60"

The ultimate writing surface, MagneticSolutions 60" features a gloss finish, powerful magnet receptive core, and a surface made for years of heavy duty writing.

Surface : **Gloss**

Magnetic : **Yes**

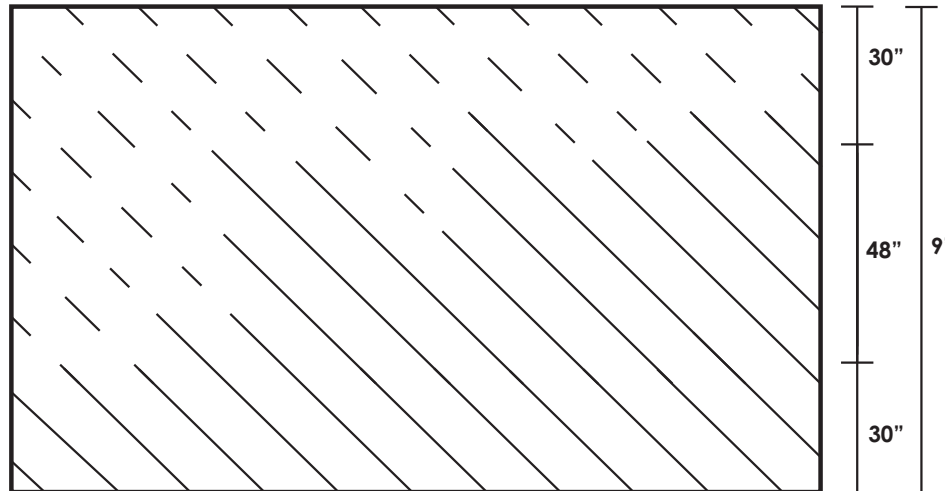
Width : **59/60"**

Length : **50 ft**

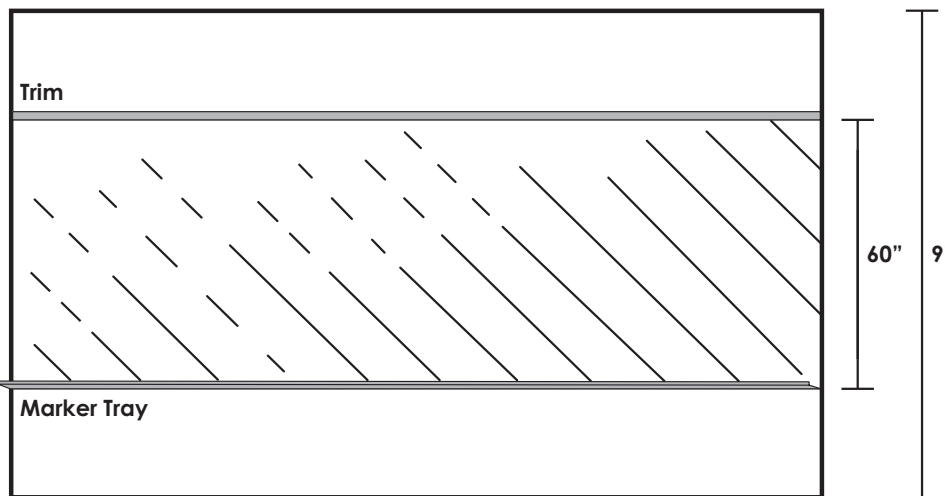
Product Code : **WWMS-001**

Fire-Rating : **Class-A**

Warranty : **10 Years**



FLOOR TO CEILING



MID-WALL WITH ACCESSORIES



Find us in
MasterSpec
a product of The American Institute of Architects



ACCESSORIES
writewalls.global/accessories

Backing : **100% Polyester**

Total Weight : **48 Oz / Sq Yd**

Total Thickness : **30 mil**

Laminate Thickness : **1 mil**

Tensile Strength : **275 x 208 Lbs**

Tear Strength : **11.8 x 7.2 Lbs**

Solvent Resistance : **1K Double rubs**

Abrasion Resistance : **20K Double rubs**

Colorfastness : **Class 4.5 - 5 at 200 AFU**



MASTERSPEC
productmasterspec.com



INSTALLATION
writewalls.global/installation



SAMPLE REQUEST
writewalls.global/samplerquest

Magnetic Solutions Projection 60"

Magnetic Solutions Projection 60" combines the powerful magnet receptive core of our MagneticSolutions 60" with a low-glare, projection capable finish designed for your multi-use space. If you are looking for a dry erase product that does it all, look no further.

Surface : **Low Glare**

Magnetic : **Yes**

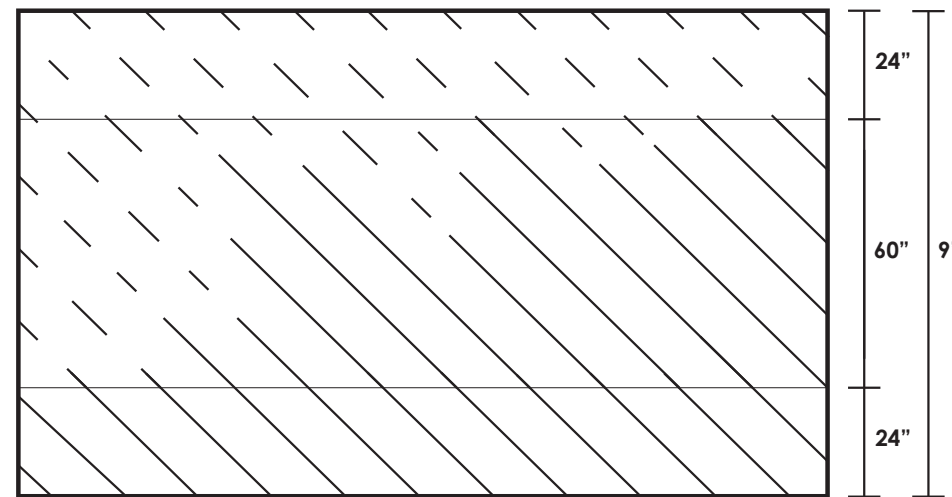
Width : **59/60"**

Length : **50 ft**

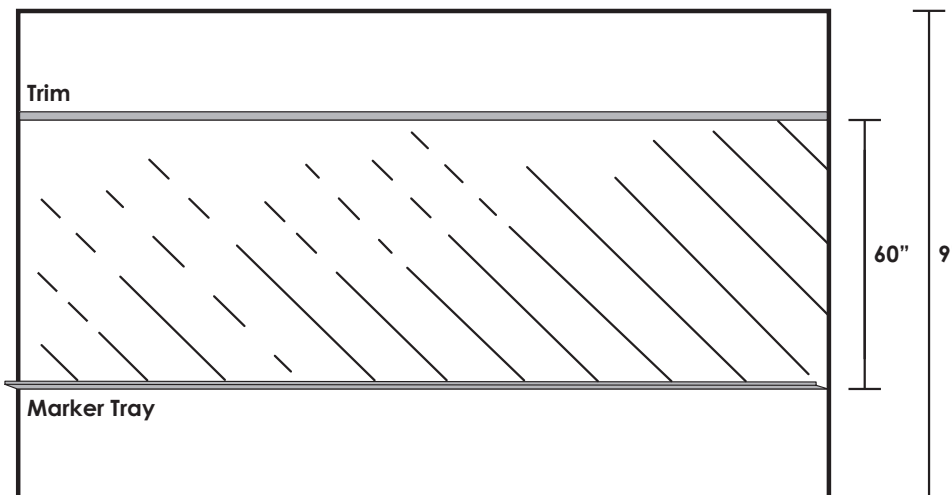
Product Code : **WWMSP-201**

Fire-Rating : **Class-A**

Warranty : **10 Years**



FLOOR TO CEILING



MID-WALL WITH ACCESSORIES



ACCESSORIES
writewalls.global/accessories

Backing : **100% Polyester**

Total Weight : **48 Oz / Sq Yd**

Total Thickness : **30 mil**

Laminate Thickness : **1 mil**

Tensile Strength : **275 x 208 Lbs**

Tear Strength : **11.8 x 7.2 Lbs**

Solvent Resistance : **1K Double rubs**

Abrasion Resistance : **20K Double rubs**

Colorfastness : **Class 4.5 - 5 at 200 AFU**



MASTERSPEC
productmasterspec.com



INSTALLATION
writewalls.global/installation



SAMPLE REQUEST
writewalls.global/samplerequest

WriteProjection-MAG 48"

Find us in
MasterSpec
 a product of The American Institute of Architects

The little brother of our Magnetic Solutions Projection 60", Write Projection-MAG 48" offers our powerful magnet receptive core and low-glare, projection capable writing surface in a 48" width.

Surface : **Low Glare**

Magnetic : **Yes**

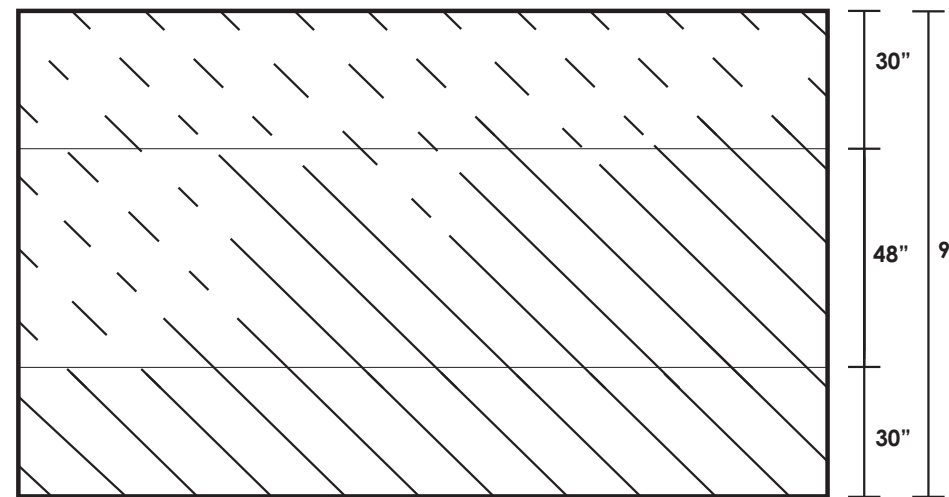
Width : **47/48"**

Length : **50 ft**

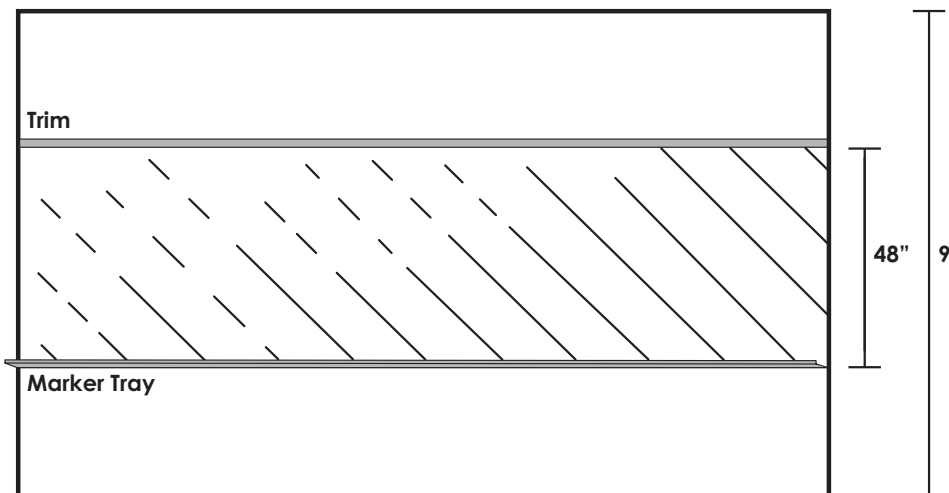
Product Code : **WWPC-MAG48-WHITE**

Fire-Rating : **Class-A**

Warranty : **10 Years**



FLOOR TO CEILING



MID-WALL WITH ACCESSORIES



ACCESSORIES
writewalls.global/accessories

Backing : **100% Polyester**
 Total Weight : **48 Oz / Sq Yd**
 Total Thickness : **30 mil**
 Laminate Thickness : **1 mil**
 Tensile Strength : **275 x 208 Lbs**
 Tear Strength : **11.8 x 7.2 Lbs**
 Solvent Resistance : **1K Double rubs**
 Abrasion Resistance : **20K Double rubs**
 Colorfastness : **Class 4.5 - 5 at 200 AFU**



MASTERSPEC
productmasterspec.com



INSTALLATION
writewalls.global/installation

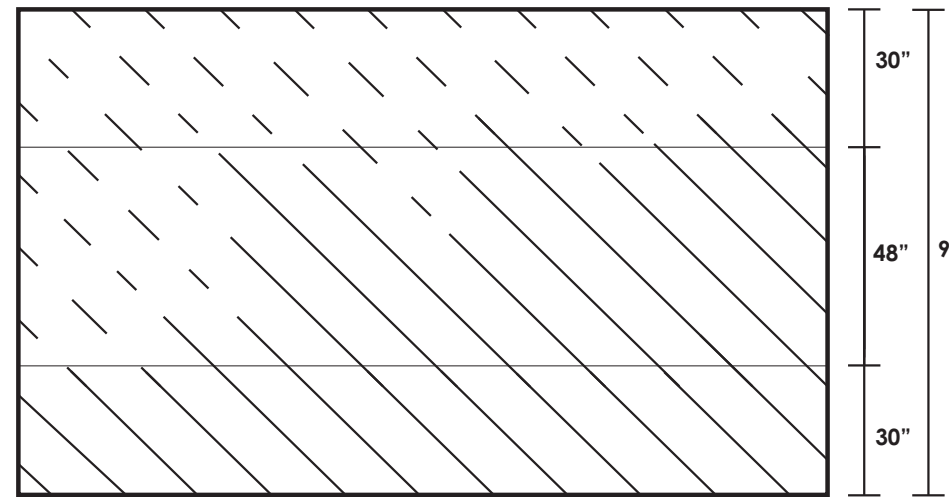


SAMPLE REQUEST
writewalls.global/samplerequest

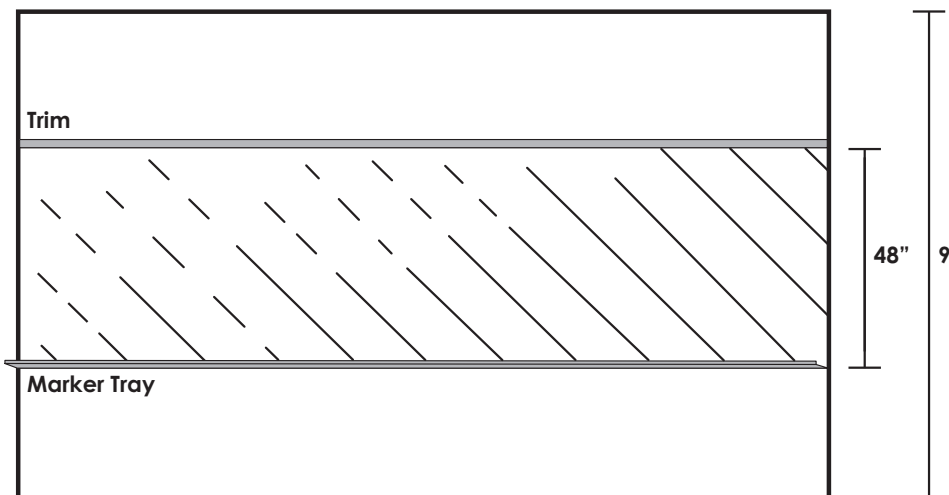
WriteMagnetic 48"

The quintessential workhorse, WriteMagnetic 48" offers the same durable gloss finish and powerful magnet receptive core as our MagneticSolutions 60", but in a 48" width perfect for trimmed out applications and re-surfacing existing boards.

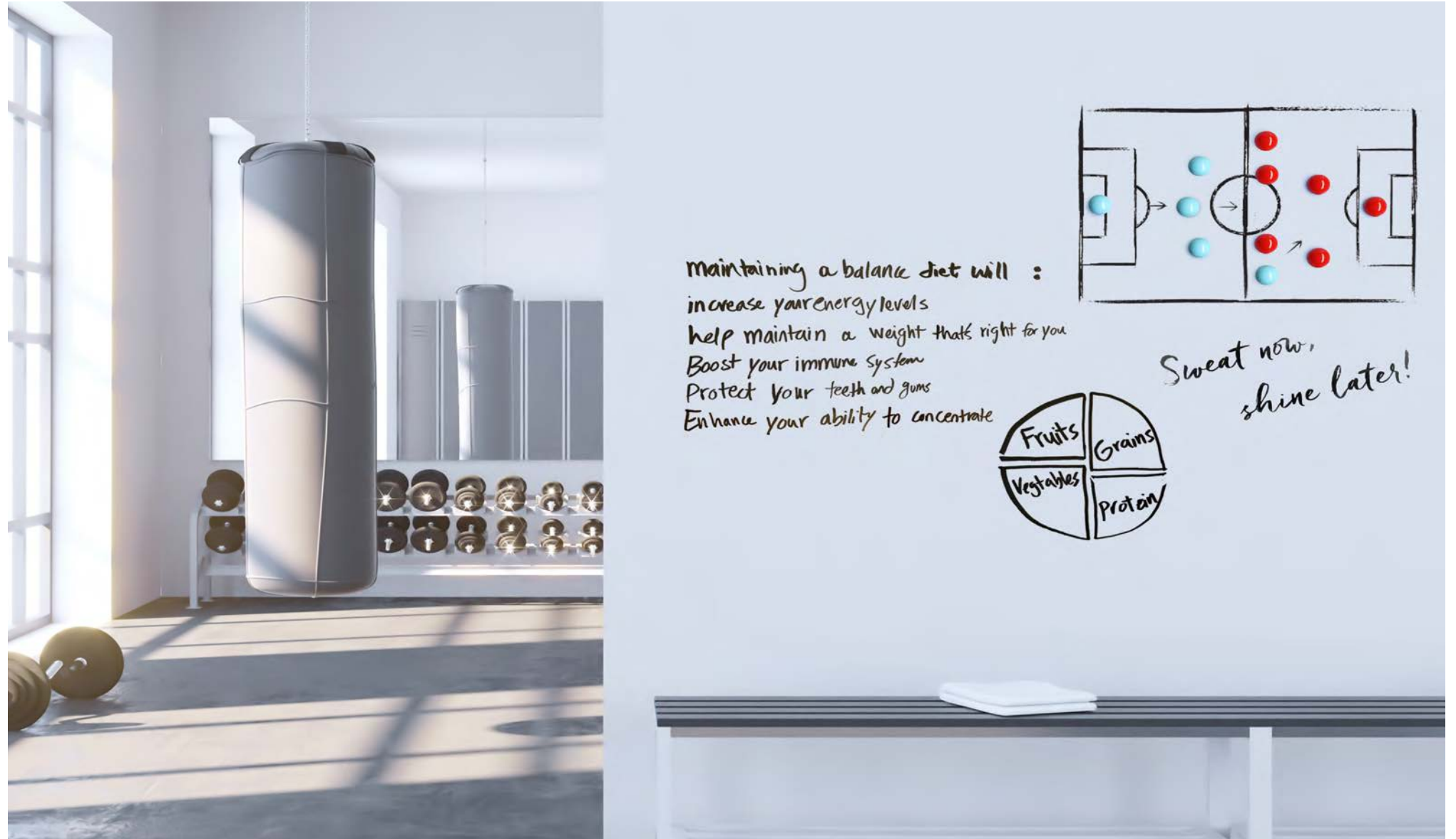
- Surface : **Gloss**
- Magnetic : **Yes**
- Width : **47/48"**
- Length : **50 ft**
- Product Code : **WWMAG48-WHITE**
- Fire-Rating : **Class-A**
- Warranty : **10 Years**



FLOOR TO CEILING



MID-WALL WITH ACCESSORIES



ACCESSORIES
writewalls.global/accessories

Backing : **100% Polyester**
 Total Weight : **48 Oz / Sq Yd**
 Total Thickness : **30 mil**
 Laminate Thickness : **1 mil**
 Tensile Strength : **275 x 208 Lbs Tear**
 Strength : **11.8 x 7.2 Lbs Solvent**
 Resistance : **1K Double rubs Abrasion**
 Resistance : **20K Double rubs**
 Colorfastness : **Class 4.5 - 5 at 200 AFU**



MASTERSPEC
productmasterspec.com



INSTALLATION
writewalls.global/installation



SAMPLE REQUEST
writewalls.global/samplerequest

WriteNow 60"

Dry erase wallcovering for the masses! From offices, healthcare, and hospitality to education, government, and retail, WriteNow offers a premium writing experience in a highly durable and budget-friendly package.

Surface : **Gloss**

Magnetic : **No**

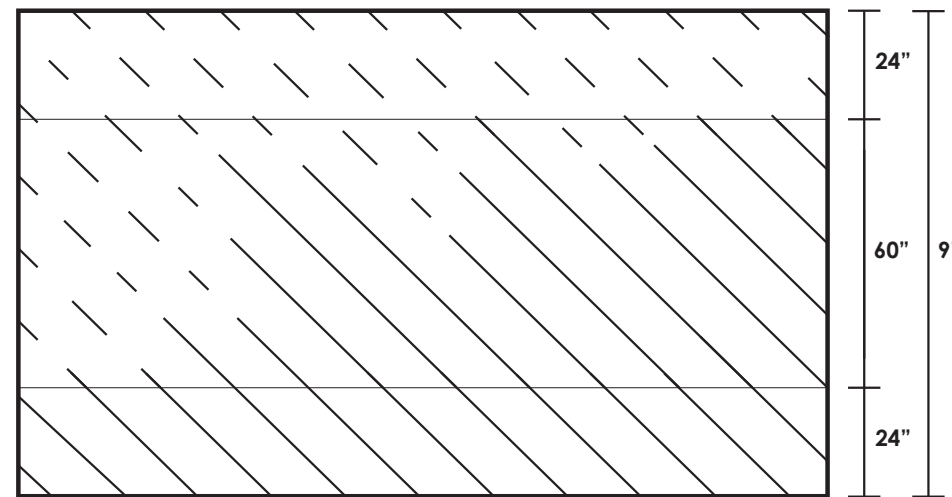
Width : **59/60"**

Length : **100 ft**

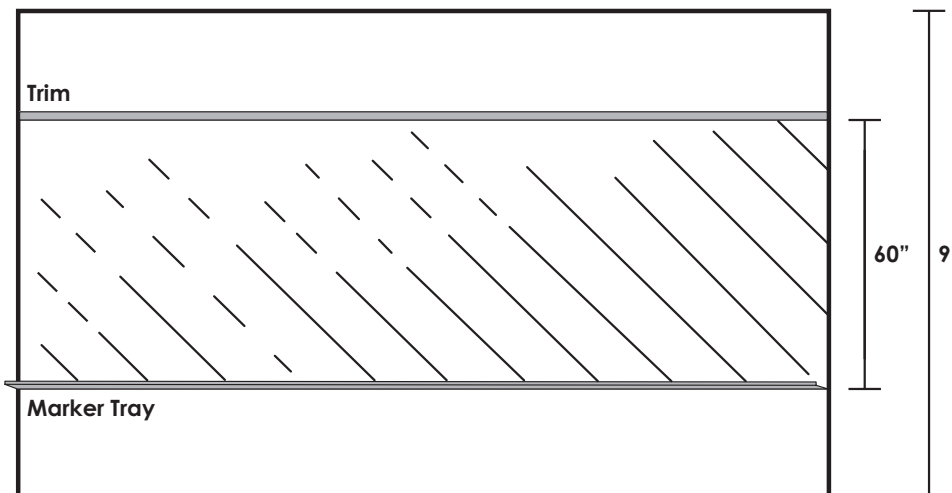
Product Code : **WWWO-WHITE**

Fire-Rating : **Class-A**

Warranty : **10 Years**



FLOOR TO CEILING



MID-WALL WITH ACCESSORIES



Find us in
MasterSpec
a product of The American Institute of Architects



ACCESSORIES
writewalls.global/accessories

Backing : **50% Polyester / 50% Cotton**

Total Weight : **14.75 Oz / Sq Yd**

Total Thickness : **15 mil**

Laminate Thickness : **1 mil**

Tensile Strength : **275 x 208 Lbs**

Tear Strength : **11.8 x 7.2 Lbs**

Solvent Resistance : **1K Double rubs**

Abrasion Resistance : **20K Double rubs**

Colorfastness : **Class 4.5 - 5 at 200 AFU**



MASTERSPEC
productmasterspec.com



INSTALLATION
writewalls.global/installation



SAMPLE REQUEST
writewalls.global/samplerrequest

WriteProjection 60"

WriteProjection's low glare surface makes it the last word in easy to read and write on projection surfaces. It's perfect for any space and designed to fit all budgets.

Surface : **Low Glare**

Magnetic : **No**

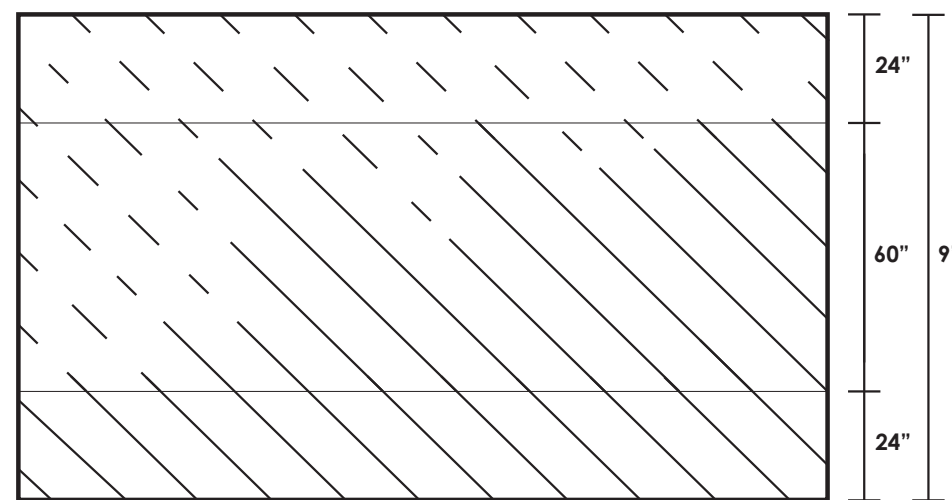
Width : **59/60"**

Length : **100 ft**

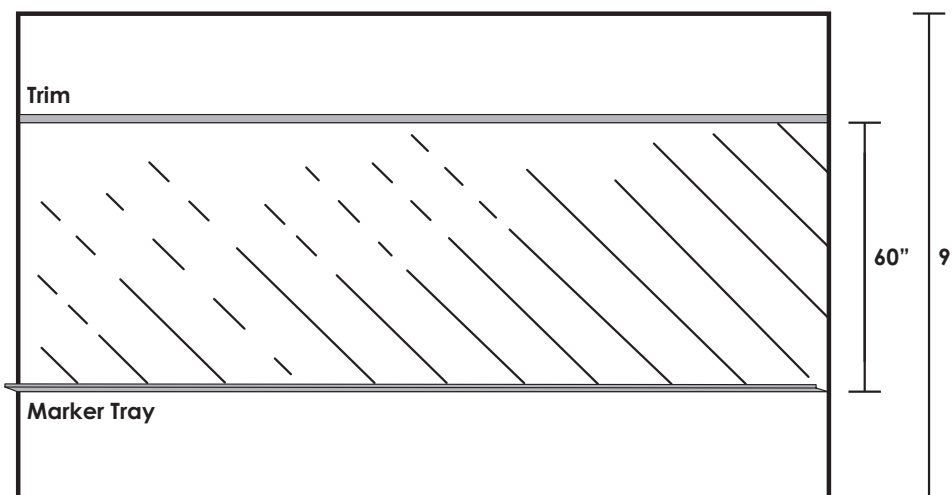
Product Code : **WWPC-WHITE**

Fire-Rating : **Class-A**

Warranty : **10 Years**



FLOOR TO CEILING



MID-WALL WITH ACCESSORIES



ACCESSORIES

writewalls.global/accessories

Backing : **50% Polyester / 50% Cotton**

Total Weight : **14.75 Oz / Sq Yd**

Total Thickness : **15 mil**

Laminate Thickness : **1 mil**

Tensile Strength : **275 x 208 Lbs**

Tear Strength : **11.8 x 7.2 Lbs**

Solvent Resistance : **1K Double rubs**

Abrasion Resistance : **20K Double rubs**

Colorfastness : **Class 4.5 - 5 at 200 AFU**



MASTERSPEC

productmasterspec.com



INSTALLATION

writewalls.global/installation



SAMPLE REQUEST

writewalls.global/samplerrequest

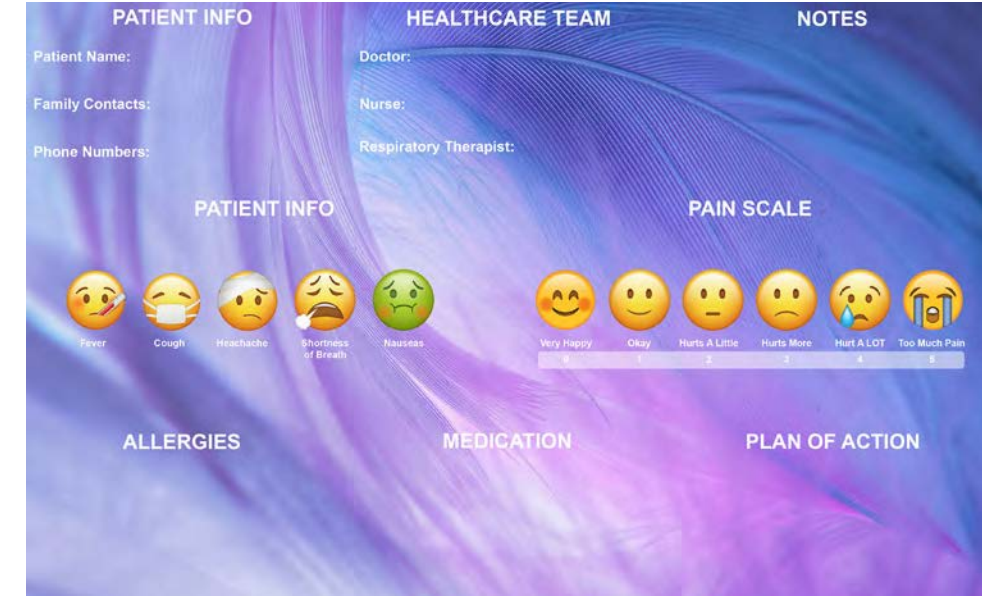
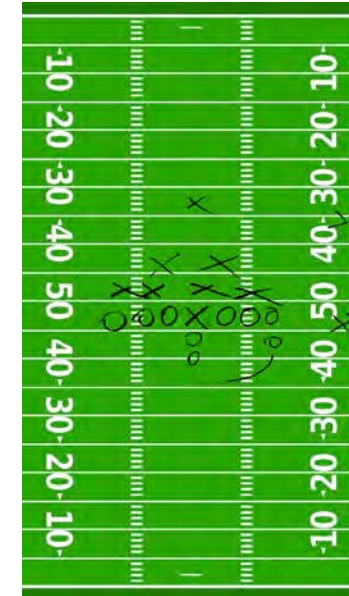
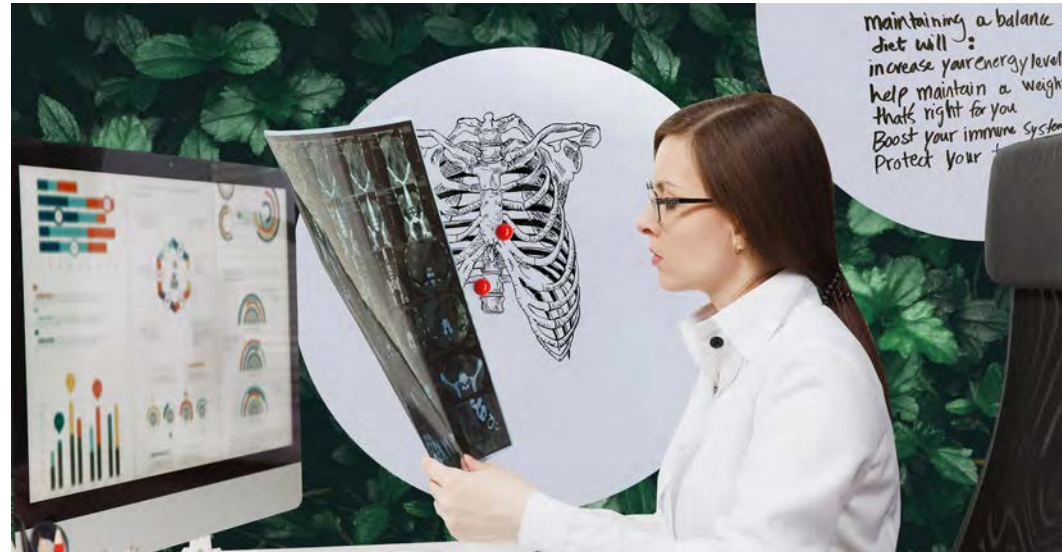
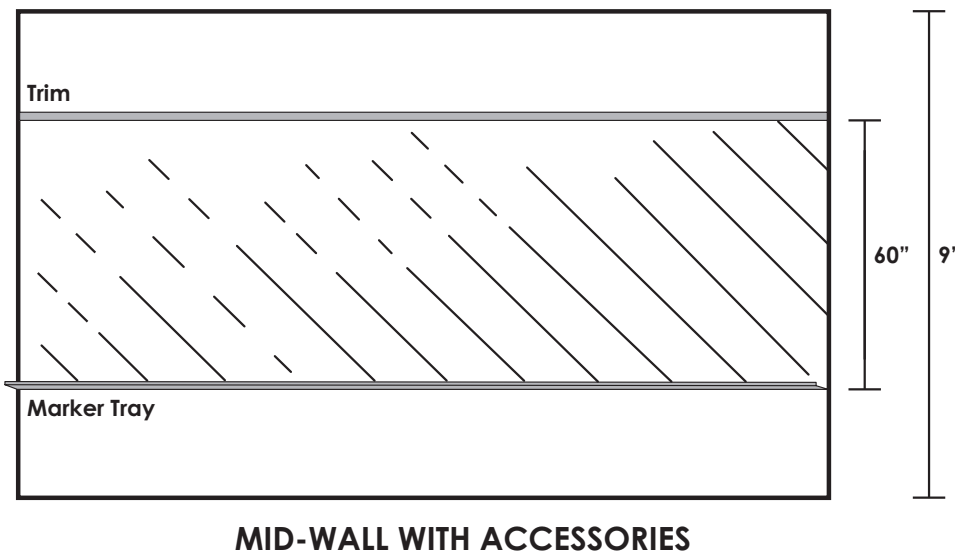
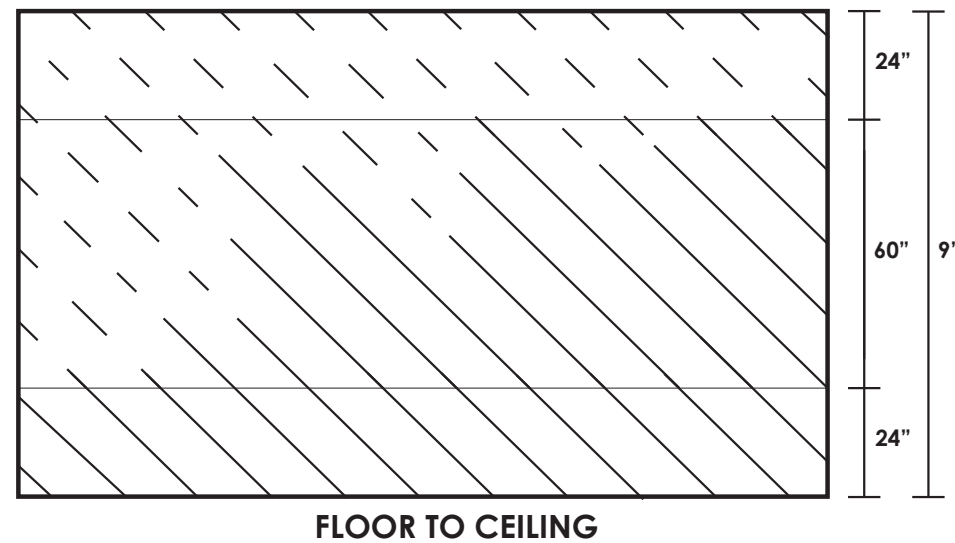


Find us in
MasterSpec
a product of The American Institute of Architects

DigitalMagnetic 60"

Make any space perfectly your own with DigitalMagnetic 60". Utilizing the latest in digital printing technology, DigitalMagnetic 60" allows you to choose any image or design and digitally print it underneath the dry erase surface for the ultimate custom writing surface.

- Surface : **Gloss**
- Magnetic : **Yes**
- Width : **59/60"**
- Length : **50 ft**
- Product Code : **WWDIGITAL-MAG60**
- Fire-Rating : **Class-A**
- Warranty : **10 Years**



Backing : **100% Cellulose Non-Woven**
 Total Weight : **27.50 Oz / Sq Yd**
 Total Thickness : **15 mil**
 Laminate Thickness : **1 mil**
 Tensile Strength : **275 x 208 Lbs**
 Tear Strength : **11.8 x 7.2 Lbs**



Find us in
MasterSpec
 a product of The American Institute of Architects

WriteInfinity

Make nearly any wall dry-erasable with WriteInfinity, the industry's first single component dry erase paint. Easy to install, WriteInfinity is designed to be installed over any smooth, painted wall, allowing for flexible installations in the color of your choice!

Surface : **Moderate Gloss**

Magnetic : **No**

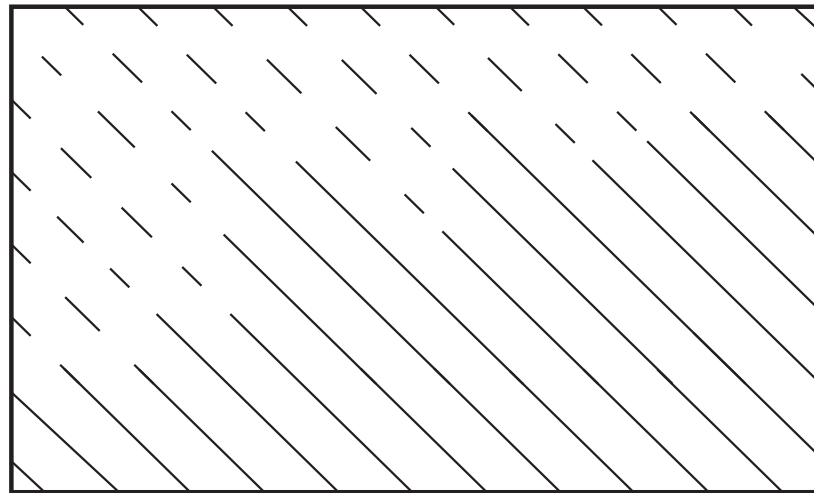
Application : **Single Coat Rolled on**

Kit Sizes : **50 sq. ft kit | 100 sq. ft kit | 200 sq. ft kit**

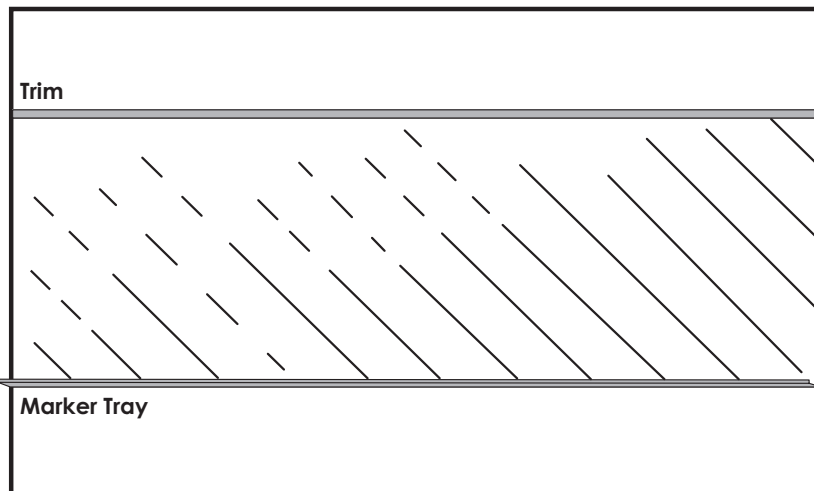
Product Code : **WWWI-50 KIT | WWWI-100 KIT | WWWI-200 KIT**

Fire-Rating : **Class-A**

Warranty : **10 Years**



FLOOR TO CEILING



MID-WALL WITH ACCESSORIES

Find us in
MasterSpec
a product of The American Institute of Architects



ACCESSORIES

writewalls.global/accessories

VOC : **Less than 10g/l**

Dry Time : **1 Hour Dry**

Cure Time : **3 Day Cure**

Color : **Transparent Clear**

Scrub Resistance : **+15K Cycles**

Sag Resistance : **Less than 3mils**



MASTERSPEC

productmasterspec.com



INSTALLATION

writewalls.global/installation



SAMPLE REQUEST

writewalls.global/samplerrequest

TackNow

The ideal addition to any of our dry erase products, and perfect as a stand-alone install, TackNow is a durable and washable natural tack board designed to stand up to the hardest use. Available in 15 select colors TackNow can be installed as a full-wall application or trimmed out with our available accessories.

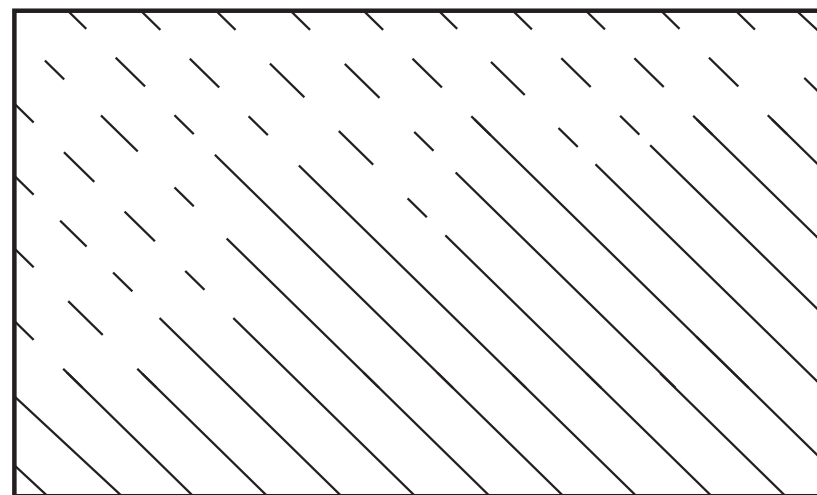
Composition : Natural materials consisting of linseed oil, cork, resin binders and pigments mixed

Backing : Jute

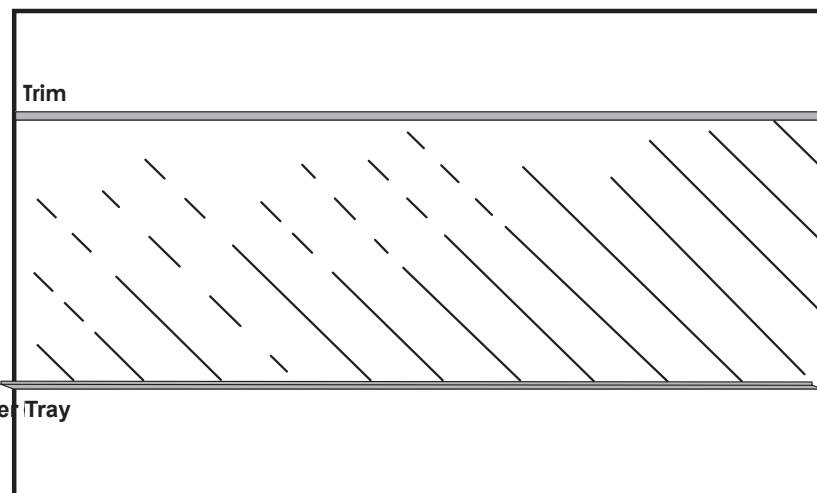
Width : 48" & 72" (available in select colors*)

Length : 90ft (27m)

Product Code : TN-20 | TN-21* | TN-22* | TN-23 | TN-24 | TN-25 | TN-26 | TN-27 | TN-28* | TN-29 | TN-30 | TN-31 | TN-32 | TN-33 | TN-34



FLOOR TO CEILING



MID-WALL WITH ACCESSORIES



Antique Copper TN-20	Tan Lines TN-21*	Acorn Nut TN-22*	Beachwood TN-23	Smoke Gray TN-24
Midnight Oil TN-25	Stone Wall TN-26	Steel TN-27	Rock Quarry TN-28*	Storm TN-29
Evening Blue TN-30	Grassy Fields TN-31	Sunshine TN-32	Tangy Orange TN-33	Paprika TN-34



ACCESSORIES

writewalls.global/accessories

Backing : Jute

Weight : Approx. 5 lbs per lineal foot

Total Thickness : 1/4" (6.0mm)

Color : Available in 15 colors

Warranty : 5 Years

Self-Healing : Yes



MASTERSPEC

productmasterspec.com



INSTALLATION

writewalls.global/installation



SAMPLE REQUEST

writewalls.global/samplerrequest

Find us in
MasterSpec
a product of The American Institute of Architects

recommended accessories

Starter Kit



8oz. spray bottle of liquid cleaner,
2 erasers, 2 sets of 4 dry erase
markers

Eraser



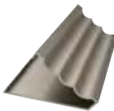
The WriteWalls Magic
Eraser

Product Code: WWE-001

Product Code: WWSK

tray

Aluminum Marker Tray



Install WriteWalls marker tray along the bottom of your dry erase surface as easy-access housing for dry erase markers, erasers, and cloths. Aluminum marker trays are available in clear satin anodized aluminum

Product Code: WWAMT

end caps

Plastic end caps for aluminum marker tray



Flat-faced plastic end cap pairs are available to complete marker tray edges

Product Code: WWPEC

trim

Snap-on Trim



WriteWalls Snap-On Trim provides a clean professional finish, is easy to install and can be added to any dry erase surface either immediately after installation, or as an after thought. Vertical and horizontal pieces come together at a pre-cut mitered edge. This trim has a 1 3/4" profile. Snap-On Trims are available in clear satin anodized aluminum. [Product Code: WWSOT](#)

J-CAP Trim for wallcovering



WriteWalls J-CAP Trim installs seamlessly with the WriteWalls vinyl dry erase surfaces. This finishing options is ideal when a low profile is preferred. This trim is for 1/6" material. J-CAP Trims are available in clear satin anodized aluminum

Product Code: WWJCP-V

J-Trim for TackNow



J-Trim for TackNow will finish all edges of your TackNow as necessary. This Trim is for 1/4" material. J-Trims are available in clear satin anodized aluminum.

Product Code: WWJTRIM

H-Trim for TackNow



H-Trim for TackNow will join two strips of TackNow as necessary. This Trim is for 1/4" material. H-Trims are available in clear satin anodized aluminum.

Product Code: WWHTRIM

Inside & Outside Trim for TackNow



Inside and outside corner trim will join two strips of TackNow at any 90 degree corner. This double duty item is the same versatile piece for either inside or outside corners. Used with 1/4" material. Inside and outside corner trims are available in clear satin anodized aluminum.

Product Code: WWIOTRIM

recommended adhesives

pigmented wallcovering primer

ECO-988



A pigmented, water-based wallcovering primer - ideal for use in new construction and with permeable or micro-vented wallcoverings. For warranty and best results, use in conjunction with ECO-788 Clay wallcovering adhesives.

- LEED Compliant
- NSF/ANSI 342 Compliant
- Water-resistant for double cutting
- Promotes strippability
- Superior white hiding power

Product code: 11605, 11601

clay strippable adhesive

ECO-788



Clay Strippable Adhesive is the second part of a 2-part wall covering primer and adhesive system. For warranty and best results, use in conjunction with ECO-988 pigmented primer.

- LEED Compliant
- NSF/ANSI 342 Compliant
- Strippable with fabric-backed vinyl

Product code: 18605, 18601

LEED COMPLIANT



recommended **cleaning** & maintenance

Care and maintenance will ensure your dry erase surfaces are clean. Recommended products listed below.

OXIVIR® TB



One-Step Hospital Grade Disinfectant Cleaner based on proprietary Accelerated Hydrogen Peroxide (AHP®) technology to deliver fast, effective disinfection and cleaning performance in a simple ready to use liquid.

- Hospital Grade Disinfectant
- Non-irritant, non-corrosive, non-bleaching, non-rinsing AHP formula
- Virucidal, Bactericidal, Fungicidal, Tuberculocidal
- Effective against 27 micro-organisms including MRSA, VRE
- Kills viruses such as Norovirus, COVID-19, H1N1, Influenza A and Hepatitis C in 1 minute

Microban 24



Initially kills 99.9% of germs, including cold and flu viruses for 24 hours. To sanitize hard, non-porous, non-food contact surfaces: (1) Let stand 10 seconds, wipe clean with a damp cloth. (2) Apply and allow air to dry without wiping. Reapply if surface is scrubbed. Microban 24 does not provide 24-hour residual virus protection.

- Eliminates odors
- Effective against S. aureus & E. aerogenes bacteria
- Prevents mold & mildew, repeat use every 7 days
- Effective against viruses: Influenza A, H1N1, RSV and COVID-19

Isopropyl Alcohol



Alcohol solutions with at least 70 percent alcohol are effective against viruses on hard surfaces. First, clean the surface with water and detergent. Apply the alcohol solution (do not dilute it) and let it sit on the surface for at least 30 seconds to disinfect.

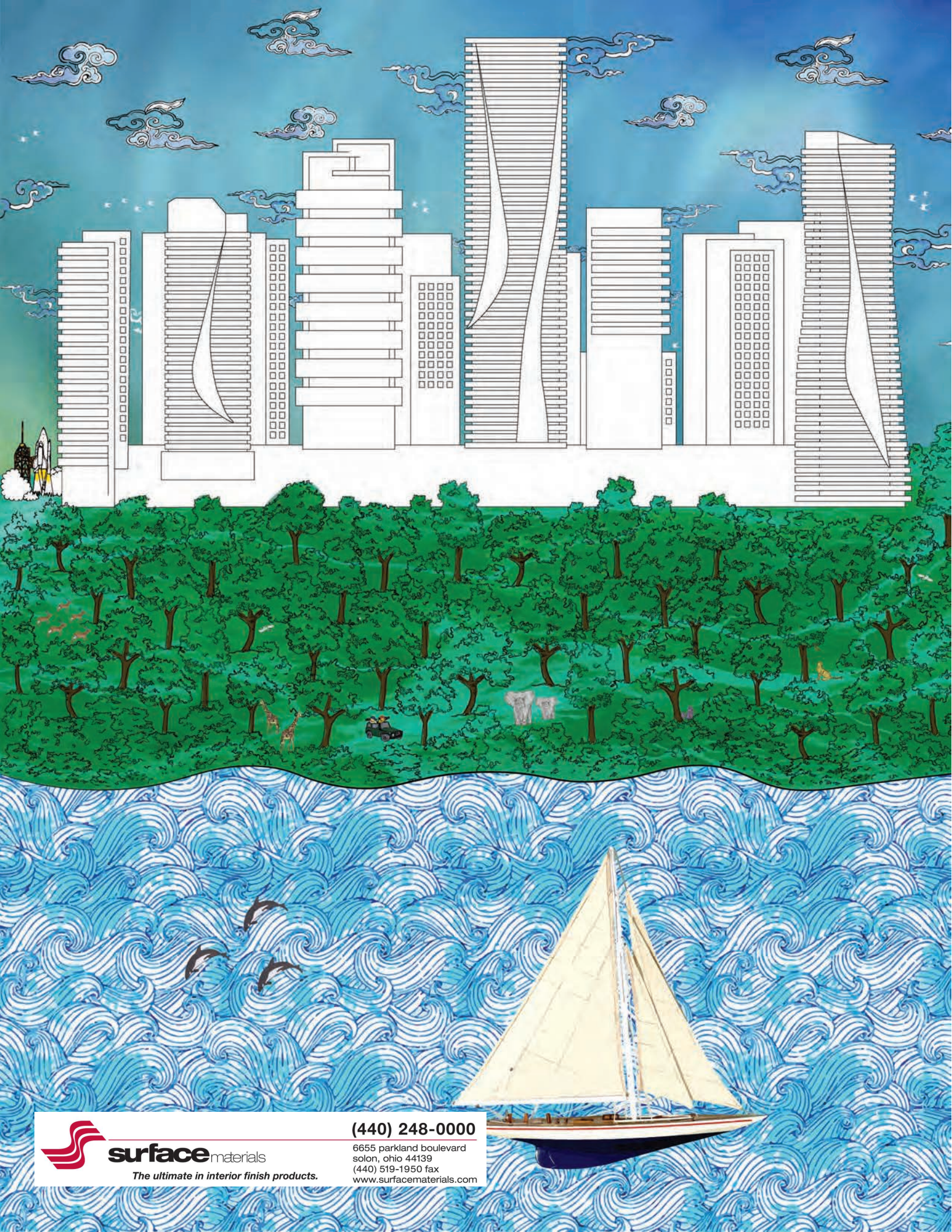
- Powerful general purpose cleaner
- Antiseptic, Antibacterial, Antiviral disinfectant and skin safe
- Rapidly evaporates upon use
- Non-corrosive leaving zero residue

quick **comparison**

Conveniently highlights features of the various dry erase products in this catalogue.

Product Name	WriteNOW	WriteMAGNETIC	WritePROJECTION	WritePROJECTION-MAGNETIC	DIGITAL-MAG	WriteINFINITY
Dry Erase Surface	X	X	X	X	X	X
Magnet Receptive		X		X	X	
Projectable			X	X		
48" Width		X	X	X		
60" Width	X	X	X	X	X	
Floor to Ceiling	X	X	X	X	X	X
Wall to Wall	X	X	X	X	X	X
Print Receptive		X			X	
Frameable	X	X	X	X	X	

Product Name	Product Code	Best Application	Color	Composition	Width & Weight	Roll Length	Warranty
Magnetic Solutions 60" DRY ERASE VINYL	WWMS-001	Dry Erase Writing Attracts Magnets	White	100% Polyester	59/60" width 48 oz/sq yd	50 ft	10 - yrs
Magnetic Solutions PROJECTION 60" DRY ERASE VINYL	WWMSP-201	Dry Erase Writing Projection Screen Attracts Magnets	White	100% Polyester	59/60" width 48 oz/sq yd	50 ft	10 - yrs
WriteProjection-MAG48" DRY ERASE VINYL	WWPC-MAG48-WHITE	Dry Erase Writing Projection Screen Attracts Magnets	White	Laminate with Polyester/Cotton backing	47/48" width 48 oz/sq yd	50 ft	10 - yrs
WriteMagnetic 48" DRY ERASE VINYL	WWMAG48-WHITE	Dry Erase Writing Attracts Magnets	White	100% Polyester	47/48" width 48 oz/sq yd	50 ft	10 - yrs
WriteNow 60" DRY ERASE VINYL	WWWO-WHITE	Dry Erase Writing	White	Laminate with Polyester/Cotton Backing	59/60" width 14.75 oz/sq yd	100 ft	10 - yrs
WriteProjection DRY ERASE VINYL	WWPC-WHITE	Dry Erase Writing Projection Screen	White	Laminate with Polyester/Cotton Backing	59/60" width 14.75 oz/sq yd	100 ft	10 - yrs
DigitalMagnetic 60" DIGITALLY PRINTABLE DRY ERASE MAGNETIC ROLL GOODS	WWDIGITAL-MAG60	Dry Erase Writing Digitally Printable	White	Digitally Printable Surface 100% Cellulose Non-Woven	59/60" width 27.5 oz/ sq yd	50 ft	10 - yrs
WRITE INFINITY DRY ERASE PAINT	WWWI-50 KIT WWWI-100 KIT WWWI-200 KIT	Dry Erase Writing	Transparent Clear With a Moderate Gloss Finish	Roll-On Coating	50 sq ft kit 100 sq ft kit 200 sq ft kit sq. ft. coverage	N/A	10 - yrs



surface materials

The ultimate in interior finish products.

(440) 248-0000

6655 parkland boulevard
solon, ohio 44139
(440) 519-1950 fax
www.surfacematerials.com

