

## Reliable conversion and isolation of signals in confined spaces

With ACT20M signal converters with 6 mm wide design

### The new dimension for converting and isolating – housed in a 6 mm width

The ACT20M series of products combines innovative technology with maximum functionality in an electronics housing measuring just 6 mm in width. The ACT20-FEED-IN-PRO-S power-feed unit eliminates the need to wire the power supply to the modules. This reduces the installation time by at least 30%. The ACT20-FEED-IN-PRO-S can supply and monitor up to 120 devices, which are mounted on the CH20 terminal rail bus.

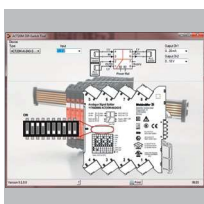
The product line consists of Input Loop Powered, Output Loop Powered and Auxiliary Powered analog isolators and converters, including a universal input converter. The eight-connection housing allows additional functionality such as 2 channel ILP, 2 channel OLP isolation and signal splitting with input powering option. The configuration is carried out via DIP switches or the FDT/ DTM software. The ACT20M modules are supplied via direct wiring or a rail bus.





### The DIP switch can be configured simply on the module

In the "ACT20M Tool" software, simply select the type of input and output, and set the DIP switch configuration as displayed.



### Installation is simple and quick

The power supply is simply snapped onto the rail bus for fast and easy installation. The supply can be through any ACT20M module or a separate power-feed unit.



### Easy configuration

DIP switches on the side are used to configure the input and output parameters, as well as the response time.



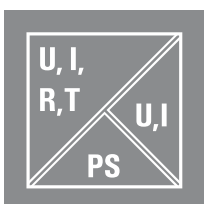
### Approvals

Fulfills the strict standards and requirements of the process industry. Can be used worldwide due to international and local approvals ATEX, IECEx, CULUS, FM, GL and DNV.



### High level of galvanic isolation

2.5 kV of electrical isolation (300 V rated voltage) ensures excellent process reliability.



# Selection table

## ACT20M: the slimmest

Extremely space-saving with a width of only 6 mm.

- Extensive approvals, e.g. ATEX, IECEx, GL, DNV
- Robust against interference
- High packing density per channel
- Certifications: ATEX, UL, DNV, FM
- Easy and quick installation of the power supply via CH20M DIN railbus
- Easy configuration via DIP switches or FDT/DTM software

Selection table

Order Number	Product									Input		Width	
		Amount	0...20 mA	4...20 mA	0...10 V	0...5 V	TC	RTD	Frequency	Miscellaneous	Sensor feed		
Space-saving signal converters – ACT20M													
Signal converters													
1175980000	ACT20M-CI-CO-S	1	X	X						4-wire sensor		6.1 mm	
1176000000	ACT20M-AI-AO-S	1	X	X	X	X				2,4-wire sensor	X	6.1 mm	
1176010000	ACT20M-AI-AO-E-S	1	X	X	X	X				4-wire sensor		6.1 mm	
1375450000	ACT20M-BAI-AO-S	1								-10(20)...+10(20) mA, -5(10)...+5(10) V		6.1 mm	
Passive isolators													
1176070000	ACT20M-CI-CO-ILP-S	1	X	X						4-wire sensor		6.1 mm	
1176080000	ACT20M-2CI-2CO-ILP-S	2	X	X						4-wire sensor		6.1 mm	
1176040000	ACT20M-CI-CO-OLP-S	1		X						2-wire transmitter	X	6.1 mm	
1176050000	ACT20M-2CI-2CO-OLP-S	2		X						2-wire transmitter	X	6.1 mm	
Signal splitters													
1175990000	ACT20M-CI-2CO-S	1	X	X						4-wire sensor		6.1 mm	
1176020000	ACT20M-AI-2SAO-S	1	X	X	X	X				2,4-wire sensor	X	6.1 mm	
1375470000	ACT20M-BAI-2AO-S	1								-10(20)...+10(20) mA, -5(10)...+5(10) V		6.1 mm	
Temperature transducer													
1435590000	ACT20M-RTCI-CO-OLP-S	1					X	X		PT100 Type: J,K		6.1 mm	
1435610000	ACT20M-RTI-CO-EOLP-S	1						X		PT100		6.1 mm	
1375510000	ACT20M-RTI-AO-S	1						X		PT100		6.1 mm	
1375520000	ACT20M-RTI-AO-E-S	1						X		PT100		6.1 mm	
1375480000	ACT20M-TCI-AO-S	1					X			Type J,K		6.1 mm	
1375500000	ACT20M-TCI-AO-E-S	1					X			Type J,K		6.1 mm	
Universal measurement transducers													
1176030000	ACT20M-UI-AO-S	1	X	X	X	X	X	X		PT50/100/250/300/400/1000, Ni50/100/1000 Type: B / C / E / J / K / L / N / R / S / T	X	6.1 mm	



	Output						Configuration	Auxiliary power	Rated voltage	Isolation	Connection system	Special characteristics
	Amount	0...20 mA	4...20 mA	0...10 V	Relay	Miscellaneous						
	1	X	X					24 V DC	300 V	3-way	S	ATEX approval Zone 2
	1	X	X	X			DIP switch	24 V DC	300 V	3-way	S	ATEX approval Zone 2
	1	X	X	X			DIP switch	24 V DC	300 V	3-way	S	ATEX approval Zone 2
	1	X	X	X			DIP switch	24 V DC	300 V	2-way	S	ATEX approval Zone 2
	1	X	X					input loop	300 V	2-way	S	ATEX approval Zone 2, Passive converter
	2	X	X					input loop	300 V	2-way	S	ATEX approval Zone 2, Passive converter
	1		X					output loop	300 V	2-way	S	ATEX approval Zone 2, Passive converter
	2		X					output loop	300 V	2-way	S	ATEX approval Zone 2, Passive converter
	2	X	X				DIP switch	24 V DC	300 V	3-way	S	ATEX approval Zone 2
	2	X	X	X			DIP switch	24 V DC	300 V	3-way	S	ATEX approval Zone 2
	2	X	X	X		-10(20)...+10(20) mA	DIP switch	24 V DC	300 V	2-way	S	ATEX approval Zone 2
	1		X			20...4 mA	DIP switch	output loop	300 V	2-way	S	ATEX approval Zone 2, Passive converter
	1		X			20...4 mA	DIP switch	output loop		-	S	ATEX approval Zone 2, Passive converter
	1	X	X	X		0(1)...5 V	DIP switch	24 V DC	300 V	2-way	S	ATEX approval Zone 2
	1	X	X			0(1)...5 V	DIP switch	24 V DC		-	S	ATEX approval Zone 2
	1	X	X	X		interne CJC, externe CJC	DIP switch	24 V DC	300 V	2-way	S	ATEX approval Zone 2
	1	X	X	X		interne CJC, externe CJC	DIP switch	24 V DC		-	S	ATEX approval Zone 2
	1	X	X	X			Software	24 V DC	300 V	3-way	S	ATEX approval Zone 2

Connection system: S = screw / Z = tension clamp / P = Push In, ILP = Input Loop Powered, OLP = Output Loop Powered