

INSTALLATION INSTRUCTIONS

Triumph Tiger 800/800XC/800XCA/800XCX/800XR/800XRX

HeliBars Handlebar Relocation Adapters

Part # HR06104

***IMPORTANT:
PLEASE GIVE CUSTOMER ENCLOSED INFORMATION!***



Thank you for your purchase of our HeliBars®. They are designed to increase your long distance comfort and improve the handling of your sport motorcycle, and we feel confident you will enjoy them.

Your HeliBars are designed to fit your motorcycle with little to no modifications needed to your stock cables and hydraulic lines. In order to achieve this fit, we do not simply increase the height at the fork tube/triple clamp area. If we were to mirror the angle of your stock handlebars, the HeliBars would not fit and clear your stock equipment, and lock to lock steering clearance would be impossible.

If you hold up the HeliBars and compare it to your stock handlebar, the difference may not be readily evident. One test we can suggest is to take your stock handlebar, and the corresponding HeliBars, and set them both on a flat surface. You can see the angle difference. Then install the left HeliBars, following the instructions. Walk around the front of your bike and look through the windshield. You should see a noticeable difference between your stock handlebar and the HeliBars. Finish the installation, and try them out. We think you'll like them!

HeliBars INSTALLATION

**IMPROPER INSTALLATION COULD RESULT IN SERIOUS INJURY OR DEATH.
HAVE A QUALIFIED MECHANIC INSTALL YOUR HeliBars.**

IF WE HAVE NOT INCLUDED SPECIFIC INSTRUCTIONS FOR YOUR MOTORCYCLE, THEN THE INSTALLATION IS SIMPLY A REVERSAL OF THE DISASSEMBLY PROCESS. **NOTE THE LOCATION OF LINES AND CABLES. BE SURE TO CLEAN THE FORK TUBES BEFORE INSTALLATION!!

!! CAUTION !! MAKE SURE THE HeliBars ARE FULLY SEATED. TIGHTEN BAR END DAMPER WEIGHTS FIRMLY. AFTER INSTALLATION, MOVE BARS LOCK TO LOCK AND CHECK CLEARANCE OF: 1.CABLES 2. HYDRAULIC LINES 3.WIRES 4.FAIRING 5.FUEL TANK. TORQUE ALL HARDWARE TO MANUFACTURER'S SPECIFICATIONS.

IF YOU HAVE INSTALLATION QUESTIONS, PLEASE CALL 1-800-859-4642.

HELI MODIFIED, INC. ASSUMES NO LIABILITY FOR ANY INJURY OR LOSS OF PROPERTY WHICH MAY RESULT FROM IMPROPER INSTALLATION OR USE OF ANY HeliBars.



WARRANTY / RETURN POLICY

We make every effort to build a quality product so you can fully enjoy your riding experience. Thank you for your order.

HeliBars® may be returned for defects in materials and workmanship within one year from the date of shipment to the original purchaser, in which event the purchaser may receive a replacement set of HeliBars.

If within thirty (30) days of the shipping date you are not satisfied for any reason, you can return the HeliBars. Return policy is valid for original purchaser only. If HeliBars are purchased from a vendor other than Heli Modified, Inc., customer must contact vendor where purchased regarding returns. Refund will be extended to original purchaser only. There are no other warranties which extend beyond this.

Conditions of this 30 day return policy:

1. Bars must not be used as a tie down point. (See attached 'Trailer Instructions').
2. Bars cannot be damaged, dented, or altered in any way.
3. Bars cannot be overtorqued.
4. Refund will be for product purchase price only, and credited to original purchaser only.
5. Product must be returned with all original equipment, documents and in original packaging. There must be no physical damage caused by the customer or by carrier.
6. A Return Authorization Number must be obtained from us before you return the product.

We reserve the right to charge a re-stocking fee of up to 25% if the above criteria are not met.

THERE ARE NO FURTHER EXPRESS OR IMPLIED WARRANTIES INCLUDING, BUT NOT LIMITED TO, IMPLIED WARRANTIES OF MERCHANTABILITY OR FITNESS FOR A PARTICULAR PURPOSE. By accepting this product, the consumer agrees to arbitrate and litigate any controversy in the State of Maine, and under the laws of the State of Maine.

HELI MODIFIED INC. ASSUMES NO LIABILITY FOR ANY INJURY OR LOSS OF PROPERTY WHICH RESULT FROM IMPROPER INSTALLATION OR USE OF ANY HELI BARS. ALL HELI MODIFIED, INC. PRODUCTS SHOULD BE INSTALLED BY A QUALIFIED MECHANIC. IMPROPER INSTALLATION MAY CAUSE DEATH OR INJURY.

Ride Safe and Enjoy!





Triumph Tiger 800/800XC/800XCA/800XCX/800XR/800XRX

HeliBars Handlebar Relocation Adapters Installation Instructions – Part # HR06104

1 1/4” (31.75mm) Taller, 1 1/8” (28.575mm) Rearward

**WARNING: IMPROPER INSTALLATION COULD RESULT IN SERIOUS INJURY OR DEATH.
HAVE A QUALIFIED MECHANIC INSTALL YOUR HELIBARS®.**

NOTE: We recommend installing one set back riser at a time to reduce complexity and protect the painted surfaces.

On 2015 and 2016 models only the left control housing wire loom needs to be relocated behind the top triple clamp. It is not necessary to disturb the throttle or any component on the right side of the handlebars.

- 1) If equipped, remove hand guards completely from left side. (See Photo #1)
- 2) Remove clutch cable from lever. Loosen adjusted screw and turn in enough to align slots to allow cable to be removed from lever. (See Photo #2)
- 3) Remove clutch lever / mirror mount from bar. (See Photo #3)
- 4) Remove clutch lever switch from mount. Insert small flat bladed screwdriver into underside of mount to compress small tang to release switch from housing. (See Photo #4)
- 5) Remove left side switch housing by removing the two screws. (See Photo #5)
- 6) Remove bolt from damper end of right side bar. You do not have to remove the right side hand guard completely. (See Photo #6)
- 7) Loosen throttle housing screws. (See Photo #7)
- 8) Cover tank with rags to protect tank from scratches. Remove bar clamps by loosening the rearward M8 smaller bolts first then the forward M10 bolts. Carefully rest stock bar on tank. (See Photo #8)
- 9) Remove stock risers from the triple tree, by twisting and gently pulling. (See Photo #9)

- 10) Remove the throttle housing assembly from the bar at this time. You will need to move the bar enough to pull the assembly from the right side of the bar. (See **Photo #10**)
- 11) Remove the right side switch gear from bar and unplug the connectors from the brake switch located underneath the right side switch gear. (See **Photo #11 and Photo #12**)
- 12) Feed the throttle assembly and switch gear through the frame/fairing mount tube to relocate these cables and wiring above the frame tubing as shown. Pull clutch cable from between the frame/fairing tubing and relocate that cable above the frame as shown. (See **Photo #13**)
- 13) Position HeliBar adapter aligning locating pins on top of triple clamp. Install supplied M10 bolts to 30 ft lbs. (See **Photo #14**)
- 14) Install stock risers on HeliBar adapter engaging pins on adapter with holes in stock risers. (See **Photo #15 & Photo #16**)
- 15) Slide the throttle assembly back onto the right side of bar and leave loose. Re-install bar onto risers using the stock hardware and clamp. Position bar in a neutral position utilizing the markings on the bars if equipped. You can fine tune the bar position for your comfort later if desired. Tighten the forward M10 bolts first then secure the rearward M8 bolts next 16 ft lbs. (See **Photo #17 & Photo #18**)
(Please note if the bar position is too far back for your comfort the HeliBar adapter is designed to allow you to rotate the stock risers 180° to position the bar more forward if you desire. (NOTE: The M10 bolt would be positioned in the rearward hole in this configuration.)
- 16) Carefully spread open the left side switch gear housing and carefully feed the switch gear between the left fork tube and frame. This will reposition the cable routing to allow for the additional rise from the HeliBars adapter. (See **Photo #19**)
- 17) Re-install right side switch housing and position throttle assembly back up against switch housing and secure throttle assembly. Make certain the throttle twists freely with no interference. Re-attach brake switch wiring. Install bolt and spacer from hand guard back into bar end.
- 18) Re-install left side switch housing. Re-attach clutch cable onto lever and re-install lever housing and adjust cable. Push clutch lever switch back into lever housing. Re-install left hand guard.
- 19) Use **Photo #20 & #21** for positioning zip ties to hold left control housing wiring.



**!! CAUTION!! HARDWARE MUST BE TORQUED
TO SPECIFIED VALUES.
THEY MUST NOT BE OVERTORQUED.
OVERTIGHTENED HARDWARE CAN LOSE INTEGRITY.**

For questions regarding installation please call 1-800-859-4642.

**HELI MODIFIED, INC ASSUMES NO LIABILITY FOR ANY
INJURY OR LOSS OF PROPERTY WHICH MAY RESULT FROM
IMPROPER INSTALLATION OR USE OF ANY HELIBARS.**





Photo # 2

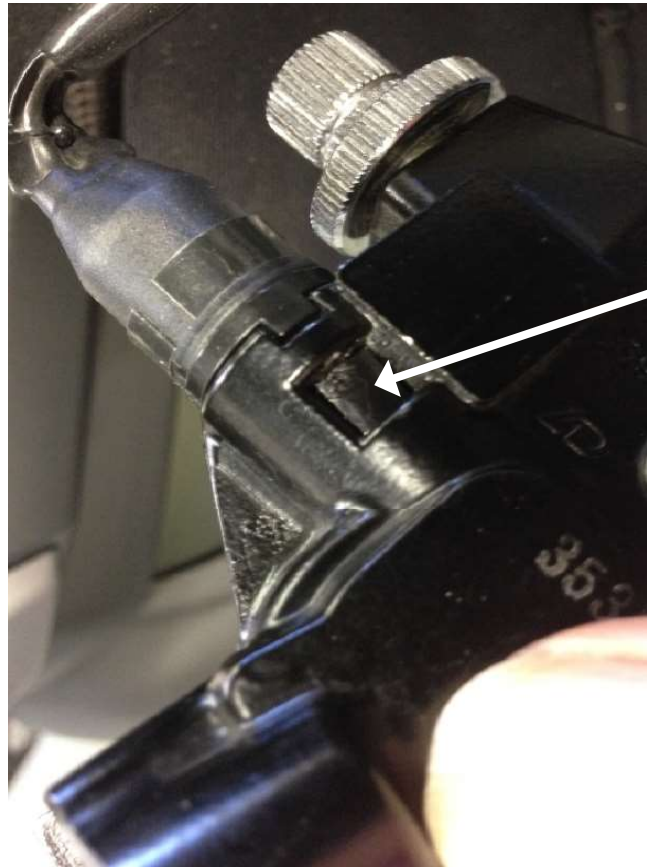


Photo # 4



Photo # 1



Photo # 3





Photo # 6



Photo # 8



Photo # 5



Photo # 7





Photo # 10



Photo # 12



Photo # 9



Photo # 11





Photo # 14



Photo # 16



Photo # 13



Photo # 15





Photo # 18



Photo # 20



Photo # 17



Photo # 19



IMPORTANT INFORMATION ABOUT POWDER COATED HELIBARS

HeliBars® are finished with a polyester powder coating. The polyester is recommended for outdoor use because of its excellent UV resistant quality; if we were to use an epoxy it would tend to fade and chalk pretty quickly when exposed to sunlight and UV rays.

Care must be taken during installation because the finish can be scratched by the sharp surfaces of the controls and master cylinder clamps. When mounting the master cylinders to bars, do not let them move around the bars with the caps loose. Mount them in the proper position and hand tighten the screws until final adjustments are made; in this way you will lessen the possibility of scratching.

NOTE: Powder coat finish is not indestructible, there are chemicals which may react negatively when applied to finish. Brake fluid may cause deterioration of the finish. We do not recommend the use of acetone or similar chemicals for cleaning purposes. We would recommend the use of an over-the-counter adhesive remover (such as Goo Gone) for the removal of any extraneous material. Please read labels directions for any cleaning/polishing product before use. If you have any questions regarding the use of any over-counter-products with the HeliBars, please call us before applying them to the powder coated finish.

If care is taken during installation, your HeliBars will continue to look as good as when they were new. They will look great for years to come with a bit of wax and careful cleaning. Thank you for your purchase, ride safe and enjoy!

Sincerely,

Harry Eddy, President

Trailing with HeliBars®

HeliBars clip ons and handlebars must not be used as the primary holding points for tie downs while trailering. *As with your stock bars* applying extreme force to the ends of the bars can bend the bars or rotate them on their mounts.

Use a wheel chock and pull the machine down and forward using soft ties or similar, attached to the lower triple clamp.

Bars should only be used as secondary attachment points to steady the motorcycle from lateral sway.

Failure to follow these guidelines can cause damage to the bars and the motorcycle, and may also void our warranty.

