



## INSTALLATION MANUAL FOR

### JEEP JK/JKU SAVVY HIGH CLEARANCE REAR INNER FENDERS SD0041



**BEFORE POWDERCOATING OR PAINTING OR INSTALLING CHECK TO MAKE SURE YOU HAVE ALL THE CORRECT PARTS AND TEST FIT PARTS TO ENSURE PROPER FITMENT IF THERE ARE ISSUES**

**\*\*\*\*\*PLEASE CONTACT US \*\*\*\*\***

**SAVVYOFFROAD.COM OR 801-876-9599**

Dear customer: Thank you for purchasing our High Clearance Front Inner Fenders for your Jeep Vehicle. We are sure you will be happy with your High Clearance Inners after your installation is complete. Please take your time during the installation and be sure to do it correctly. Completely read the directions before starting your installation so you know what to expect. If you have any questions, call (801-876-9599).

**AGAIN, IF YOU ARE MISSING ANYTHING PLEASE CALL US RIGHT AWAY BEFORE INSTALLING AND TEST FITTING. BEFORE POWDERCOATING OR PAINTING OR INSTALLING CHECK TO MAKE SURE YOU HAVE ALL THE CORRECT PARTS AND TEST FIT PARTS TO ENSURE PROPER FITMENT. IF THERE ARE ISSUES, PLEASE CONTACT US AT SAVVYOFFROAD.COM WE WILL NOT TAKE BACK OR SWAP OUT PARTS THAT HAVE BEEN POWDER COATED!**

### **How to Remove the Jeep JK/JKU Stock Inner Fenders**

#### **Tools Needed:**

**10MM Socket & Ratchet**

**Clip removal tool (recommended)**

**Flathead screwdriver or plastic trim removal tool**

**WD-40 or soapy water for stubborn clips if needed**

#### **1. Remove the Rear Wheels (Optional but helpful)**

**Jack up the Jeep and remove the rear wheels for easier access.**

***(Not required, but gives more working space.)***

#### **2. Locate All Retaining Clips and Bolts**

**Look inside the wheel well at the top and edges of the inner fender liner.**

**You'll see a mix of plastic push clips and bolts securing it to the body and flare.**

#### **3. Remove Plastic Push Clips**

**Use a flathead screwdriver or trim clip tool to carefully pry out the plastic clips.**

**Work slowly to avoid breaking them if you plan to reuse or save. (they are not needed for use when installing the Savvy rear inners)**

#### **4. Remove the 10mm Bolts**

Use your socket and ratchet to remove any 10mm bolts along the edge or behind the liner, if present.

Some bolts may be tucked behind the liner or near the fender flare.

#### **5. Pull Out the Inner Fender**

Once all clips and bolts are removed, pull the liner out starting from the bottom edge.

It may flex, so wiggle it free carefully to avoid cracking the plastic.

#### **6. Clean the Exposed Area**

Wipe down the inner quarter panel and wheel well area to remove trapped dirt or debris before installing aftermarket parts.



**NOW YOU CAN BEGIN THE INSTALL OF THE SAVVY JK FRONT INNER FENDERS**



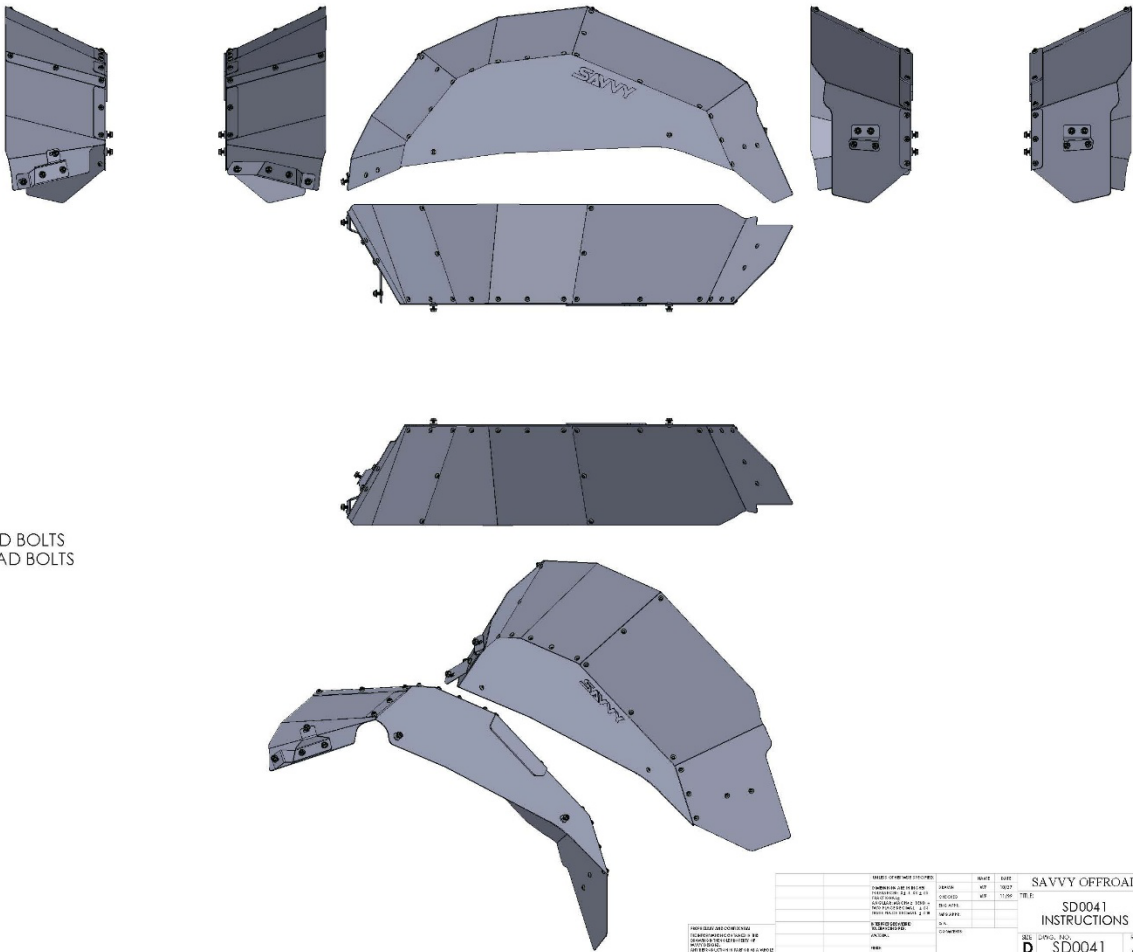
# PACKAGE CONTENTS

## PARTS LIST

- X1 SD0041-1A (PASSENGER SIDE BACK PANEL)
- X1 SD0041-1B (PASSENGER SIDE FRONT PANEL)
- X1 SD0041-1C (PASSENGER SIDE TOP PANEL)
- X1 SD0041-1D (PASSENGER SIDE REAR PANEL)
- X1 SD0041-1E (PASSENGER SIDE REAR LOGO BACKING PLATE)
- X1 SD0041-1F (PASSENGER SIDE REAR MOUNTING TAB)
- X1 SD0041-1G (PASSENGER SIDE FRONT MOUNTING TAB)
- X4 SD0041-1H (PASSENGER & DRIVERS SIDE REAR PANEL SPACERS)
- X1 SD0040-2A (DRIVERS SIDE PANEL)
- X1 SD0040-2B (DRIVERS SIDE FRONT PANEL)
- X1 SD0040-2C (DRIVERS SIDE TOP PANEL)
- X1 SD0041-2D (DRIVERS SIDE REAR PANEL)
- X1 SD0041-2E (DRIVERS SIDE LOGO BACKING PLATE)
- X1 SD0041-2F (DRIVERS SIDE REAR MOUNTING TAB)
- X1 SD0041-2G (DRIVERS SIDE FRONT MOUNTING TAB)

## HARDWARE LIST

- X42 M6 X 1.0 X 8MM LONG TORX T30 BUTTON HEAD BOLTS
- X12 M6 X 1.0 X 16MM LONG TORX T30 BUTTON HEAD BOLTS
- X20 M6 X 1.0 SERRATED FLANGE NUTS



### Tools Needed:

1/4" Drill Bit, Power Drill, T30 Torx bit, 10MM Wrench and Sharpie for marking holes to drill.

### STEP 1:

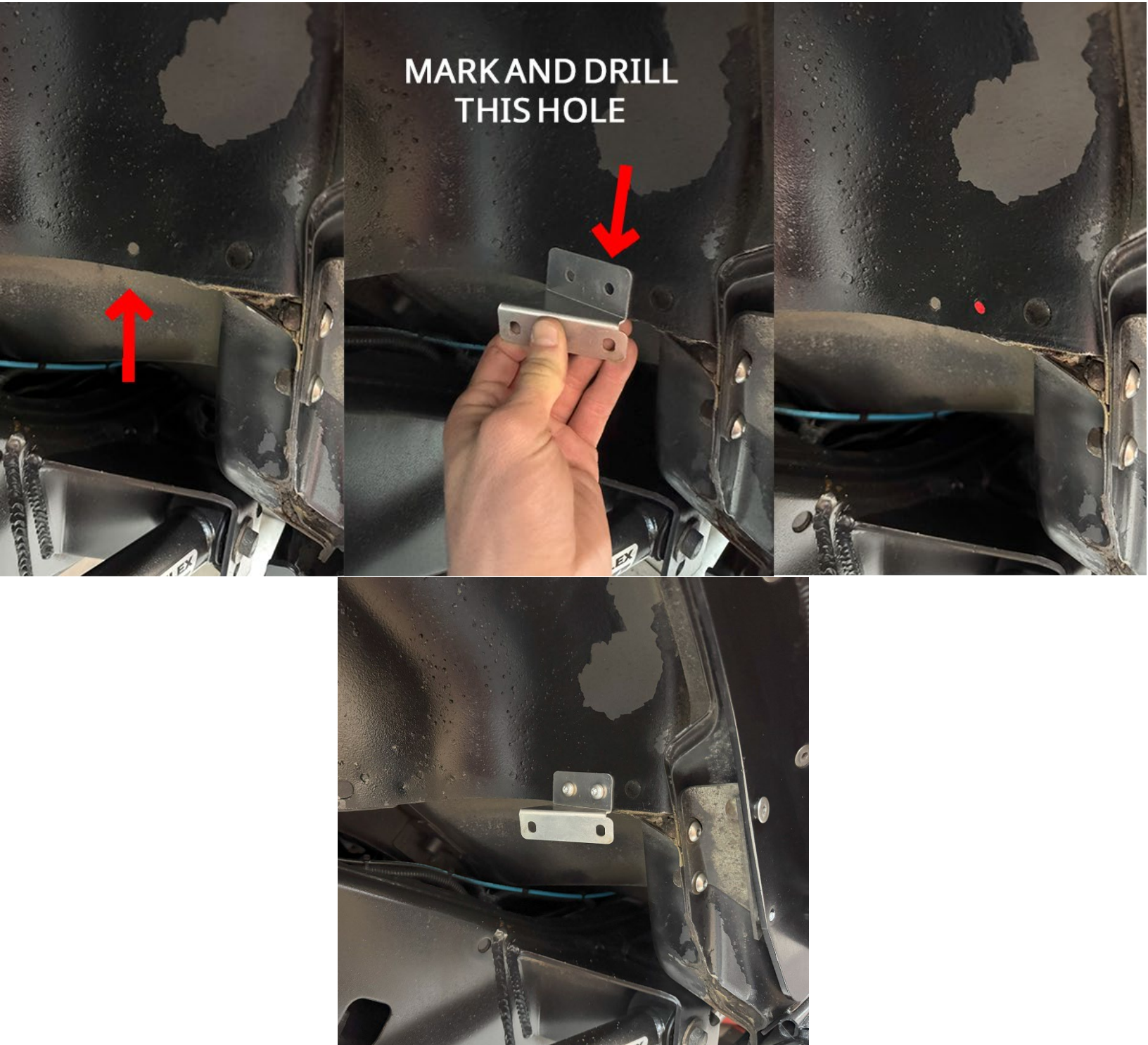
Start on the passenger side with bracket SD0041-1F. Align it using the factory hole and the body seam indent as your reference. Once positioned correctly, mark the two mounting holes. Mark the holes then drill both holes using a 1/4" drill bit. After drilling, install the rear mounting tab using two M6 x 1.0 x 16mm T30 Torx button head bolts and two M6 serrated flange nuts.





**STEP 2:**

Using bracket SD0041-1G, align it with the front body seam and factory hole indent. Once properly positioned, mark the two mounting hole locations. Drill both holes using a 1/4" drill bit. Then install the front mounting tab using two M6 x 1.0 x 16mm T30 Torx button head bolts and two M6 serrated flange nuts.



**STEP 3:**

Loosely assemble the passenger side inner fender using the shorter M6 T30 Torx button head bolts. Do not fully tighten anything yet keeping everything loose is critical for proper alignment during install.

**Tech Tip:** It's often easier to install the inner fender without the rear panel (SD0041-1D) at this stage.

With the inner loosely assembled, position it onto the Jeep. Start by sliding the top of the inner up and in, then lift the rear section into place, aligning the two rear mounting holes.

Insert the two spacers (SD0041-1H) between the rear panel and the body. Then install two M6 x 1.0 x 16mm T30 Torx button head bolts and two M6 serrated flange nuts at the rear mount but leave them loose.

Next, install the two front and two rear mounting bolts (also M6 x 1.0 x 16mm with serrated flange nuts). Once all bolts are in and everything is aligned, you can go back and tighten everything down.



The next photo shows where the aluminum spacers go.







#### STEP 4:

Repeat the same process on the driver's side. Note that the rear mounting bracket (SD0041-2F) has a slightly different shape, refer to the photos for the correct mounting position and orientation. Follow the same alignment, marking, drilling, and installation steps as done on the passenger side.









#### **STEP 5: FINAL CHECK**

**Inspect for rubbing or rattles.**

**Reinstall wheels and torque lugs to factory spec.**

**Take a short drive and recheck all the bolts in a day or two**

### **Installation Complete – Your Jeep JK/JKU Now Has More Clearance**

**Congratulations! You've just installed the highest clearance with the most versatility rear inner fenders in the world, giving you unmatched clearance and ultimate off-road capability.**

**Now, get out there and hit the trails! If you have any questions or need assistance, don't hesitate to reach out. [WWW.SAVVYOFFROAD.COM](http://WWW.SAVVYOFFROAD.COM) OR Call: 801-876-9599 See you on the trails!**