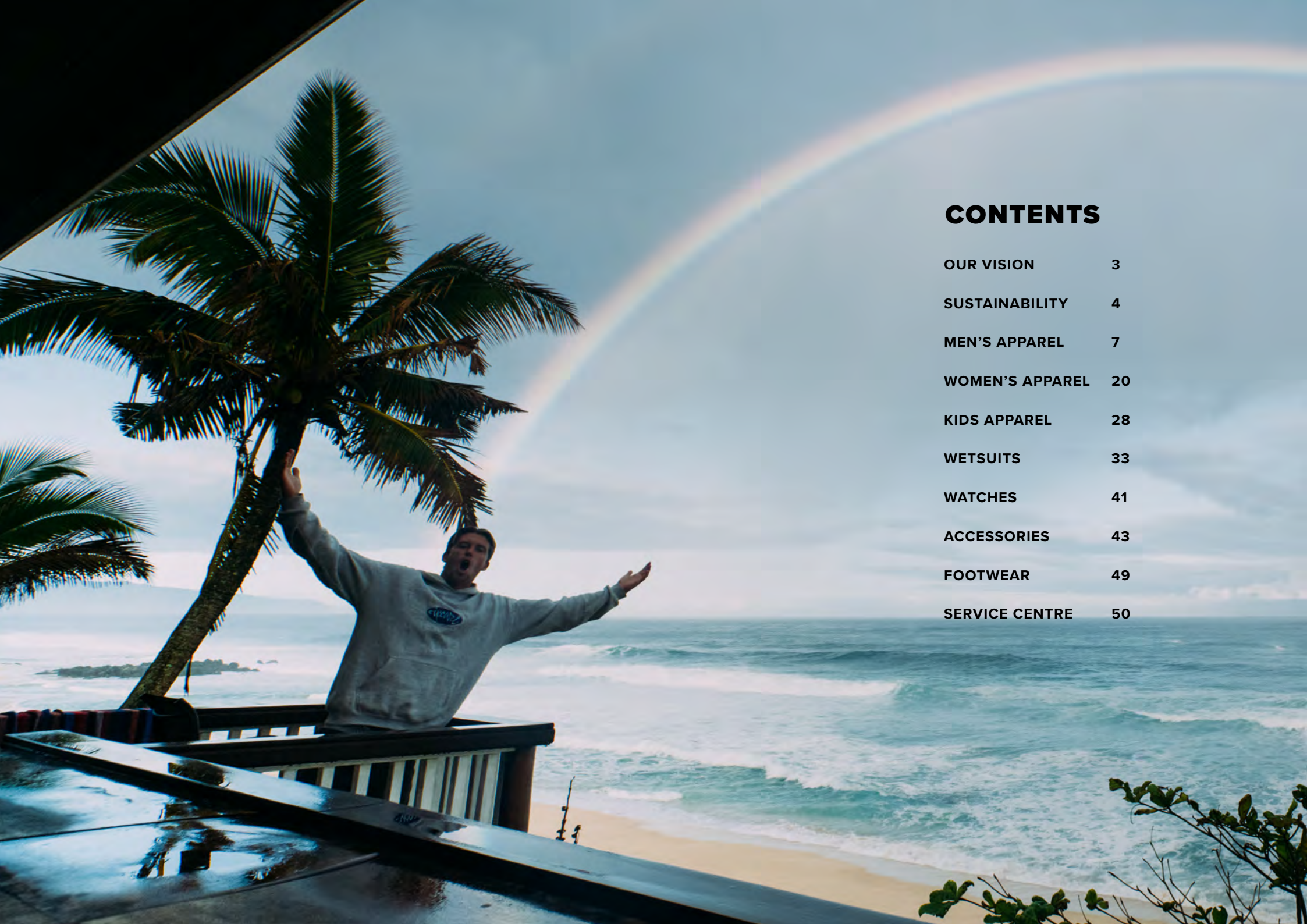




**RIPCURL**   
**TRAINING**  
**WINTER 26**

APPAREL, WETSUITS, WATCHES AND ACCESSORIES  
APRIL - SEPTEMBER



## **CONTENTS**

|                        |           |
|------------------------|-----------|
| <b>OUR VISION</b>      | <b>3</b>  |
| <b>SUSTAINABILITY</b>  | <b>4</b>  |
| <b>MEN'S APPAREL</b>   | <b>7</b>  |
| <b>WOMEN'S APPAREL</b> | <b>20</b> |
| <b>KIDS APPAREL</b>    | <b>28</b> |
| <b>WETSUITS</b>        | <b>33</b> |
| <b>WATCHES</b>         | <b>41</b> |
| <b>ACCESSORIES</b>     | <b>43</b> |
| <b>FOOTWEAR</b>        | <b>49</b> |
| <b>SERVICE CENTRE</b>  | <b>50</b> |



**RIPCURL** 

**OUR VISION**

To be regarded in all that we do  
as the ultimate surfing company.

Because The Search, surfing and our way of life are important to us, we balance profit with our impact on oceans, beaches and people.

We have bold ESG targets and our B Corp certification means that we meet high standards for positive social and environmental impact.

Rip Curl is committed to using business as a force for good.

**Rip Curl, The Ultimate Surfing Company joins B Corp movement**

Certified



Corporation

**RIPCURL** 



# NOW, YOU MIGHT BE WONDERING, WHAT IS A B CORP?

Well, B Corps are businesses that meet high standards of social and environmental performance, public transparency, and legal accountability to balance profit and purpose. In other words, B Corps are businesses that prioritize people and the planet, alongside profit. Here are some of the key actions we have taken to achieve this certification.



As a company, we understand the impact of our actions on the environment, which is why we track and certify our carbon emissions to reduce our impact.

At our Torquay HQ, we installed solar panels to power our store, warehouse, and office with renewable energy. In our Thailand Wetsuit Factory, we also installed solar panels to offset their operational emissions.



Our Reconciliation Action Plan reflects our commitment to inspire positive change and walk towards reconciliation with honesty, integrity and respect.



We are committed to restoring coastlines in different regions of the world and celebrate 22 years of Rip Curl Planet Days.

Through our partnership with Surf Aid, we protect our oceans and support communities. We also participate in Surf Aid's annual Urban Surf Cup to raise awareness of ocean protection.



We focus on innovation and durability. We create products using sustainable materials, like recycled polyester in our boardshorts.

To ensure our suppliers share our values, we track factory environmental performance and 100% are screened using third-party social monitoring.

We believe in treating our workers fairly, which is why we pay a living wage in our Onsmooth factory to show they are valued.



We are committed to recycling and have a Global wetsuit take-back program to recycle used wetsuits.

We also divert 50% of our neoprene waste to Airstep, who create carpet underlay using neoprene offcuts.



# ENVIRONMENTAL, GOVERNANCE & SUSTAINABILITY INITIATIVES

Four years ago, we started riding the wave to a more sustainable future. We began small, choosing humble yet attainable goals. And since then, we have come a long way. Although there is still so much more to do, we couldn't be more excited to showcase just how far we have come. We have commenced our membership journey with the Fair Labour Association (FLA) and the Sustainable Apparel Coalition (SAC).

## QUALITY ECO SURF PRODUCTS

All our polyester woven labels are made with Recycled polyester.

This only the start of our journey. We look forward to finding new ways to work towards a more sustainable future, and are stoked bring our customers along for the ride.

## PREFERRED FIBRE LIST

As a part of our journey to a more sustainable future, Rip Curl designers now work with a preferred fibre list that will help us use fewer virgin fibres in our products. But we don't stop there. We also ensure that there are environmental processes used in the formation process for each material, which is why the fibres and suppliers we trust are...

- Bio renewable plastic (Eyewear) • Recycled polyester (Backpacks, Travel, Utility, Beanies, Scarves, Hair Accessories).
- Solution Dyed yarn Ecoya (Backpacks) • Repreve (Packing Cells, Footwear) • BCI (Towels) • Leather working group (Wallets).
- Recycled polyester twill (Headwear) • Organic cotton canvas (Headwear, Shoulder Bags, Backpacks) • Hemp (Headwear).
- Recycled cotton (Headwear) • Bloom EVA (Footwear) • Recycled Polyimide Microfibre (Hair Accessories).

## BETTER COTTON INITIATIVE

Rip Curl is excited to announce a partnership with the Better Cotton Initiative (BCI), the largest cotton sustainability program in the world. Together we are committed to improving cotton farming practices globally; making global cotton production better for the people who produce it, better for the environment it grows in, and better for the future of the industry. Better Cotton is sourced via a Mass Balance system.

## SWINGTAGS

Not only have we worked to reduce the quantity of swingtags we produce, but those that are necessary for specific products are now created using Forest Stewardship Council (FSC) approved stock. An FSC certification ensures that the paper used comes from responsibly managed forests managed in a way that preserves biological diversity and provide social and economic benefits.

## REDUCTION IN PLASTICS

Over the past three years we have evaluated each product we make, and have eliminated the use of plastics in packaging wherever possible. This is a learning process, and we are continuing to work to further reduce this packaging in future ranges. Bags that do need to be used on certain product for quality control are now made with 30% recycled PE material. Break Down Plastic (BDP) additive and are reduced to 30 micron, helping to reduce their impact on our planet.

## GIVING WASTE A NEW LIFE

At Rip Curl we strive to make quality surf products that last, and we have worked to find the most durable and sustainable fibres available. This season over 90% of our Backpacks & Travel are now made with Recycled Polyester.

Who invited you?  
Put your time in,  
pay your dues. Get  
up earlier, search  
further, take off  
deeper, charge harder.  
Jump the fence, crash  
the ~~fucking~~ party, steal  
a beer and have a load  
of fun along the way.  
There are no invites

**LIVE THE SEARCH.**  
RIPCURL



**RIPCURL**  X

**CORDURA**  
re/cor™

# 10 YEAR PARTNERS WITH RIP CURL

We've partnered with Cordura® for over a decade,  
blending their durable yarns with our high-performance stretch fabrics.  
This collaboration gave rise to the ultimate durable performance fabric,  
featured in many Rip Curl styles, including the iconic Mirage 321 Boardshort.

Now, we're proud to launch Cordura® Re/Cor:  
A revolutionary fabric made with over 60% recycled nylon.  
It's a bold step toward our 2030 sustainability goals,  
with 100% of our Boardshorts and Boardwalks now made from preferred fibres,  
without compromising the performance you expect from Rip Curl.

**CORDURA® Re/Cor NOW AVAILABLE IN  
MIRAGE 321 - MIRAGE SEARCH - SEARCH VOLLEY - BOARDWALK GLOBAL ENTRY**



# BOARDSHORT FIT GUIDE

Rip Curl's boardshort Fit Guide has been designed to help you find your perfect fit, no matter the occasion.



## STANDARD

Classic fitting everyday boardshort with fixed tie waist.

**Waist:** 85cm  
**Hip:** 108cm  
**Thigh:** 68cm  
**Leg Opening:** 56cm



## RELAXED

Relaxed fitting boardshort with zipper entry pockets and fixed waist closure.

**Waist:** 85cm  
**Hip:** 110cm  
**Thigh:** 70cm  
**Leg Opening:** 54cm



## LOOSE

Modern day chilled fit offered in a longer leg length option.

**Waist:** 85cm  
**Hip:** 112cm  
**Thigh:** 70cm  
**Leg Opening:** 60cm



## BAGGY

Straight from the Y2K archives, worn big, long and baggy.

**Waist:** 85cm  
**Hip:** 114cm  
**Thigh:** 75cm  
**Leg Opening:** 60cm



## STANDARD VOLLEY

Classic fitting everyday elasticated waist boardshort.

**Waist:** 82cm  
**Hip:** 110cm  
**Thigh:** 69cm  
**Leg Opening:** 58cm



## BAGGY VOLLEY

Straight from the Y2K archives, worn big, long and baggy offered in an elasticated waist.

**Waist:** 78cm  
**Hip:** 118cm  
**Thigh:** 75cm  
**Leg Opening:** 67cm



# WALKSHORT FIT GUIDE

Rip Curl's walkshort Fit Guide has been designed to help you find your perfect fit, no matter the occasion.

---



## STANDARD FIT

A straight fit top block with a tailored leg opening.

**Waist:** 86cm  
**Hip:** 108cm  
**Thigh:** 67.2cm  
**Leg Opening:** 52cm



## RELAXED

A classic everyday walkshort with a relaxed silhouette.

**Waist:** 86cm  
**Hip:** 110cm  
**Thigh:** 68cm  
**Leg Opening:** 55cm



## LOOSE FIT

Wider leg opening with a slightly lower crotch for that all round looser 90's fit.

**Waist:** 86cm  
**Hip:** 108cm  
**Thigh:** 68cm  
**Leg Opening:** 60cm

---

# RIPCURL

## TEE FIT GUIDE

Rip Curl's Tee Fit Guide has been designed to help you find your perfect fit, no matter the occasion.



### STANDARD

Your everyday fitted tee.

**Chest:** 39cm  
**Length:** 73cm  
**Width:** 52.5cm  
**Neck Rib:** 1.75cm



### RELAXED

A classic shape with a more relaxed feel.

**Chest:** 42cm  
**Length:** 74cm  
**Width:** 55cm  
**Neck Rib:** 2cm



### LOOSE

Fits like an original surf tee from the 90's.

**Chest:** 46cm  
**Length:** 74cm  
**Width:** 57cm  
**Neck Rib:** 2.5cm



### BOXY

A youthful relaxed boxy fit, with a slight crop.

**Chest:** 50cm  
**Length:** 70cm  
**Width:** 61cm  
**Neck Rib:** 2.5cm



### LONG SLEEVE

A classic shape with a more relaxed feel.

**Chest:** 43cm  
**Length:** 76cm  
**Width:** 53cm  
**Neck Rib:** 2cm

# RIPCURL

## SHIRTS FIT GUIDE

Rip Curl's shirts Fit Guide has been designed to help you find your perfect fit, no matter the occasion.



### STANDARD

Classic fitting short sleeve shirt with tailoring details and casual pocket options

**Shoulder Width:** 45.7cm  
**Chest:** 112cm  
**Total length from HPS:** 77.5cm  
**Sleeve length:** 22.8cm



### RESORT

A laid back looser fit. Slightly longer sleeves and a revere collar.

**Shoulder Width:** 49.5cm  
**Chest:** 120cm  
**Total length from HPS:** 77.5cm  
**Sleeve length:** 23.5cm



### BOXY

Loose fit body and sleeves. Slightly pulled up hem.

**Shoulder Width:** 49.5cm  
**Chest:** 124cm  
**Total length from HPS:** 75cm  
**Sleeve length:** 27cm



### STANDARD

Classic fitting long sleeve shirt with tailoring details and casual pocket options.

**Shoulder Width:** 45.7cm  
**Chest:** 112cm  
**Total length from HPS:** 77.5cm  
**Sleeve length:** 66cm



### FLANNEL

A relaxed fitting shirt with traditional workwear inspired details.

**Shoulder Width:** 47cm  
**Chest:** 114cm  
**Total length from HPS:** 77.5cm  
**Sleeve length:** 66cm

# RIPCURL

## PANTS FIT GUIDE

Rip Curl's pants Fit Guide has been designed to help you find your perfect fit, no matter the occasion.

---



### STRAIGHT

A modern looser fitting leg.  
Designed with stretch denim to provide all day comfort.

**Waist:** 86cm  
**Hip:** 108cm  
**Thigh:** 66cm  
**Knee:** 47cm  
**Cuff:** 40cm



### RELAXED

A bit looser than our standard straight fit. Straight and relaxed.

**Waist:** 86cm  
**Hip:** 108cm  
**Thigh:** 66cm  
**Knee:** 50cm  
**Cuff:** 42cm



### LOOSE

Wider leg opening with a slightly lower crotch for that all round looser 90's fit.

**Waist:** 86cm  
**Hip:** 108cm  
**Thigh:** 68cm  
**Knee:** 58cm  
**Cuff:** 46cm



# UV RASH VESTS FIT GUIDE

The highest quality materials are utilised in the construction of Rip Curl's UV Tee range. Because fabric weight, weave and colour can vary in their performance properties and sun protection qualities, constant testing means we can certify the quality of all the materials we use.



## PERFORMANCE FIT

Designed to be worn fitted, reducing drag and increasing efficiency in the water, to help you perform your best.



## RELAXED FIT

A slightly more relaxed fit for easy wear, everyday comfort.



## T-SHIRT FIT

A traditional t-shirt block for maximum t-shirt comfort and a casual look.

## ICON DESCRIPTIONS



### CHLORINE FRIENDLY

The pool is a great place to use Rip Curl UV Tees. Chlorine is a strong chemical that jeopardises the integrity of the elastane in the garment. Rip Curl now offers selected garments in Chlorine Friendly material, which will keep their structure, shape and performance even when worn in chlorine swimming pools.

**UPF 50+ RATED  
AS EXCELLENT  
SUN PROTECTION**

### UPF 50+ SUN PROTECTION

Not all UV protection garments are the same. We ensure that all our materials are laboratory tested and certified as having a 50+ UPF rating which is the highest UV protection rating available.

The UPF rating applies only to the area of skin covered. Protection maybe reduced if the material is wet, stretched or from the effects of normal wear or exposure to chemicals. For best sun protection use hats, clothing that provides maximum skin coverage, sunglasses, sunscreen and shade.



### QUALITY MATERIALS

The highest quality materials are utilized in the construction of Rip Curl's UV Tee range. Because fabric weight, weave and colour can vary in their performance properties and sun protection qualities, constant testing means we can certify the quality of all the materials we use.

RIPCURL 

# 2 FOR

## Plains

PROGRAM

Muscles & Tanks


2 FOR  
**\$50**

Tees

2 FOR  
**\$60**





**RIPCURL**   
**2 FOR \$120**  
**FLEECE PROGRAM**

T&CS: AVAILABLE ON ANY RIP CURL  
SURF STAPLE HOODIE OR TRACKPANT.



**RIPCURL**   
**2 FOR \$120**  
**FLEECE PROGRAM**

T&CS: AVAILABLE TO ANY RIP CURL  
CLASSIC SURF HOODIE, CREW NECK OR TRACKPANT.

ANTI  
SERIES

# Jackets to Live The Search



EMBRACE THE ELEMENTS

ANTI  
SERIES

# Jackets to Live The Search

Singtex® woven technology  
unites soft shell  
and fleece into one

Adjustable Hood

Performs like a jacket  
with the comfort of fleece

Zip Pockets



EMBRACE THE ELEMENTS



# VAPORCOOL

KEEP COOL, KEEP DRY, KEEP SEARCHING

VAPORCOOL TECHNOLOGY IS BUILT TO KEEP YOU COOL.  
LIGHTWEIGHT AND MOISTURE-WICKING FABRICS  
KEEP YOU DRY AND COMFORTABLE.  
KEEP COOL. KEEP DRY. KEEP SEARCHING.



**BREATHABLE &  
COOLING**

OPEN KNIT CONSTRUCTION  
IMPROVED AIRFLOW



**MOISTURE  
WICKING**

POLYESTER FIBRES THAT  
MOVE MOISTURE AWAY FROM  
THE SKIN KEEP YOU COOLER  
AND DRIER



**LIGHT  
WEIGHT**

190GSM MAX ON JERSEY  
260GSM MAX ON FLEECE



# LIVE THE SEARCH



RIPCURL 

JAMAICA & SHALEY



Who invited you? Put your time in, pay your dues. Get up earlier, search further, take off deeper, charge harder. Jump the fence, crash the ~~fucking~~ party, steal a beer and have a load of fun along the way. There are no invites.

# BIKINI FIT GUIDE

Rip Curl presents a fit system to help you choose the best bikini for your body type.

## SUPPORT



### LIGHT SUPPORT

A classic beach silhouette best suited for an A-C cup.



### GOOD SUPPORT

Comfort and confidence for an A to C cup.



### FULL SUPPORT

Both style and excellent support for a C to DD cup.



### D-DD SUPPORT

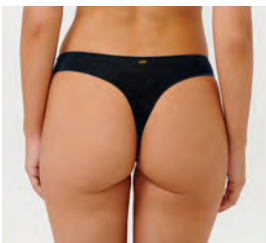
Specially designed to support a larger bust.



### E SUPPORT

Specially designed to support a larger bust.

## COVERAGE



### BARE COVERAGE

Micro coverage for those ready to make a statement.



### SKIMPY COVERAGE

A brief fit with minimal coverage.



### CHEEKY COVERAGE

A flattering and comfortable shape with a little bit of cheek.



### HIGH GOOD COVERAGE

A modest fit that looks good on every body shape.



### FULL COVERAGE

Full coverage to flatter a curvy body shape.

## WOMEN'S SIZE CHART

### APPAREL

| SIZES | AU | US  | EU  |
|-------|----|-----|-----|
| XXS   | 6  | XXS | XXS |
| XS    | 8  | XS  | XS  |
| S     | 10 | S   | S   |
| M     | 12 | M   | M   |
| L     | 14 | L   | L   |
| XL    | 16 | XL  | XL  |
| XXL   | 18 | XXL | XXL |

### DENIM

| SIZES | AU | US | EU |
|-------|----|----|----|
| 24    | 6  | 0  | XS |
| 25    | 7  | 1  | XS |
| 26    | 8  | 3  | S  |
| 27    | 9  | 5  | S  |
| 28    | 10 | 7  | M  |
| 29    | 11 | 9  | M  |
| 30    | 12 | 11 | L  |
| 32    | 14 | 13 | L  |
| 34    | 16 | 15 | XL |

# RIPCURL

## TEE FIT GUIDE

Rip Curl's Tee Fit Guide has been designed to help you find your perfect fit, no matter the occasion.



### BABY TEE

A cropped, more fitted style tee, straight from the 90's.

**Chest:** 43cm  
**Hem:** 40cm  
**Length:** 37cm  
**Sleeve Length:** 12.5cm  
**Neck Rib:** 2cm



### CROP TEE

A cropped length and oversized body for the ultimate relaxed look.

**Chest:** 54cm  
**Hem:** 54cm  
**Length:** 46cm  
**Sleeve Length:** 18cm  
**Neck Rib:** 1.5cm



### STANDARD TEE

Your everyday classic fitted tee

**Chest:** 48cm  
**Hem:** 52cm  
**Length:** 59.5cm  
**Sleeve Length:** 17cm  
**Neck Rib:** 1.5cm



### RELAXED TEE

Slightly shorter than the standard and heritage tee, a classic shape with a more relaxed feel.

**Chest:** 51cm  
**Hem:** 55cm  
**Length:** 57.5cm  
**Sleeve Length:** 16cm  
**Neck Rib:** 2cm



### OVERSIZED TEE

Our oversized boyfriend fit tee, providing the ultimate comfort and style.

**Chest:** 55cm  
**Hem:** 57cm  
**Length:** 62cm  
**Sleeve Length:** 19cm  
**Neck Rib:** 2cm



### BOXY TEE

A youthful relaxed boxy fit, with a slight crop.

**Chest:** 59cm  
**Hem:** 61cm  
**Length:** 60cm  
**Sleeve Length:** 50cm  
**Neck Rib:** 2cm

\*All measurements based off a size small.

# UV RASH VESTS FIT GUIDE

The highest quality materials are utilised in the construction of Rip Curl's UV Tee range. Because fabric weight, weave and colour can vary in their performance properties and sun protection qualities, constant testing means we can certify the quality of all the materials we use.



## PERFORMANCE FIT

Designed to be worn fitted, reducing drag and increasing efficiency in the water, to help you perform your best.



## RELAXED FIT

A slightly more relaxed fit for easy wear, everyday comfort.



## SURF SUIT

Offering good coverage and support, our surf suits are designed to be worn fitted for the ultimate comfort and performance.



## SURF SUIT BOY LEG

This style offers the same performance fit as our regular surf suit, but with additional length in the legs, for those seeking a bit more coverage.

## ICON DESCRIPTIONS



### CHLORINE FRIENDLY

The pool is a great place to use Rip Curl UV Tees. Chlorine is a strong chemical that jeopardises the integrity of the elastane in the garment. Rip Curl now offers selected garments in Chlorine Friendly material, which will keep their structure, shape and performance even when worn in chlorine swimming pools.

**UPF 50+ RATED  
AS EXCELLENT  
SUN PROTECTION**

### UPF 50+ SUN PROTECTION

Not all UV protection garments are the same. We ensure that all our materials are laboratory tested and certified as having a 50+ UPF rating which is the highest UV protection rating available.

The UPF rating applies only to the area of skin covered. Protection maybe reduced if the material is wet, stretched or from the effects of normal wear or exposure to chemicals. For best sun protection use hats, clothing that provides maximum skin coverage, sunglasses, sunscreen and shade.



### QUALITY MATERIALS

The highest quality materials are utilized in the construction of Rip Curl's UV Tee range. Because fabric weight, weave and colour can vary in their performance properties and sun protection qualities, constant testing means we can certify the quality of all the materials we use.

# MIRAGE

High Performance Swimwear  
made for Surfing

# Made for Surfing

Welded critical seams

Welded side panels  
and taping

Perforated vents

High Performance  
Compression Fabric



THE  
RIP CURL

# one

A circular knit swim piece that is engineered to fit you real nice. From the beach to the surf, it's designed for life on the beach.

**ADJUSTABLE STRAPS**

Wide adjustable straps for your desired fit.

**GOOD SUPPORT**

Comfort and confidence that will stretch and support your shape.

**FULL COVERAGE**

Full coverage to flatter a curvy body shape.

**ENGINEERED STRETCH  
BODY MAPPING FIT**

Designed to fit most body types whilst retaining its shape with engineered support and contouring.

**STITCH-FREE BIND**

Welded stitch-free bind to allow stretch and comfort.



**CIRCULAR KNIT  
COMPRESSION**



**SOFT  
TOUCH**



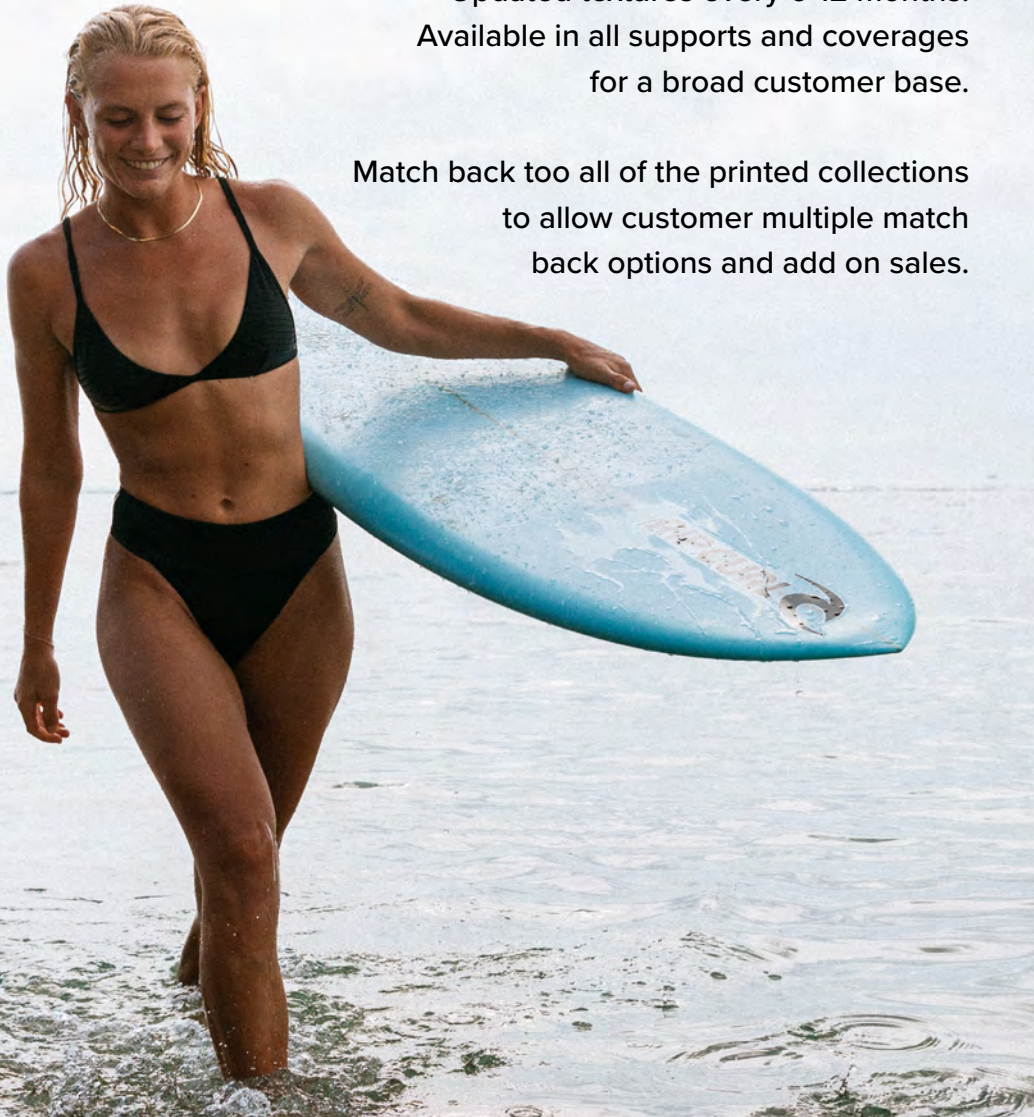
**STITCH-FREE  
BIND**

# PREMIUM SURF ESSENTIALS

**PREMIUM SURF** is a colour and trend vehicle for a fashion savvy customer.

Updated textures every 6-12 months.  
Available in all supports and coverages for a broad customer base.

Match back too all of the printed collections to allow customer multiple match back options and add on sales.



# BIKINI CARE INSTRUCTIONS

To prolong a bikini's life, refer to the swing tag instructions and follow these pointers:

- Hand wash separately in cold water with a liquid detergent. Do not use softener.
- Drip dry in the shade.
- Rinse thoroughly after use.
- Do not wring, soak or bleach the garment.
- Do not leave rolled up wet.
- Do not iron.
- Do not dry clean.
- Be careful wearing in chlorinated water as it may damage your bikini. Ensure you rinse thoroughly after use.
- Fake tanning products and some sunscreen lotions may damage swimwear. Take extra care in the application of these products & always ensure they completely dry before they come in contact with your swimsuit.
- In order to remove trapped sand, gently run your fingernail over the dried swimwear fabric.
- Avoid contact with rough surfaces as this may cause some pilling to the swimwear fabric.

## NEOPRENE SWIMWEAR REQUIRES A LITTLE EXTRA CARE...

- Do not wear your neoprene bikini in chlorinated water.
- Store your neoprene bikini flat to ensure it doesn't crease.
- Do not hang with clips as it will cause indentation marks on neoprene fabric.

# PERIOD SWIMSUIT



LIGHT FLOW PERIOD PROTECTION FOR THE ACTIVE SURFER.

- Sporty styling details with bold chest logo.
- Adjustable racer back strap with removable padding.
- Made to keep you in the water and active for longer



Features a soft moisture wicking absorbent layer with permeable TPU film laminate to retain liquid



Suitable for light flow



The main body fabric is made with high quality specialised elastane that has a high-resistance to chlorine degradation

# KIDS

Quality Surfing Goods

**BOYS 8 - 16**

**GIRLS 8 - 14**

**JUNIOR 1 - 8**



# BOYS & GIRLS SIZE CHART

| BOYS 8-16 |        |       |       |     |
|-----------|--------|-------|-------|-----|
| SIZE      | HEIGHT | CHEST | WAIST | HIP |
| 8         | 130    | 68    | 60    | 72  |
| 10        | 140    | 72    | 64    | 74  |
| 12        | 150    | 76    | 68    | 78  |
| 14        | 160    | 80    | 70    | 82  |
| 16        | 165    | 84    | 74    | 86  |

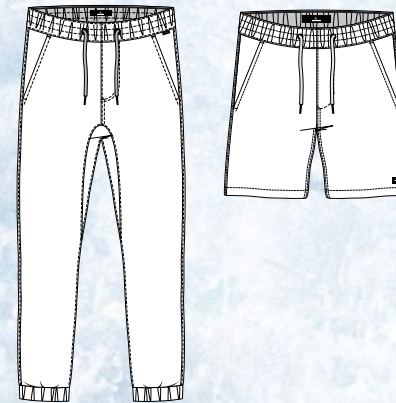
| GIRLS 8-16 |        |       |       |     |
|------------|--------|-------|-------|-----|
| SIZE       | HEIGHT | CHEST | WAIST | HIP |
| 8          | 130    | 68    | 60    | 72  |
| 10         | 140    | 74    | 62    | 78  |
| 12         | 150    | 80    | 64    | 84  |
| 14         | 160    | 82    | 68    | 86  |
| 16         | 163    | 87    | 73    | 91  |

| TODDLER 1-8 |        |       |       |     |
|-------------|--------|-------|-------|-----|
| SIZE        | HEIGHT | CHEST | WAIST | HIP |
| 1-2         | 92     | 56    | 54    | 56  |
| 3-4         | 108    | 60    | 56    | 62  |
| 5-6         | 120    | 64    | 58    | 66  |
| 7-8         | 130    | 68    | 60    | 72  |

# WAIST FUNCTION GUIDE

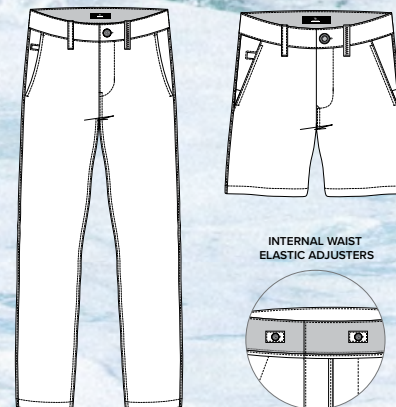
DESIGNED WITH COMFORT TO LIVE THE SEARCH

## ELASTIC WAIST



Super easy pull on design that features an elasticated waist & functional drawcord which allows for style to adjust and fit.

## ADJUSTABLE WAIST



Internal adjustable elastic detail allows for style to be adjusted to fit whilst maintaining the external look and feel of our epic pant & short.

INTERNAL WAIST  
ELASTIC ADJUSTERS

# KIDS RASH VESTS FEATURES & BENEFITS



## ULTIMATE SUN PROTECTION - LAB TESTED AND APPROVED

Not all U.V protection garments are the same. We ensure that all our materials are laboratory tested and certified as having a 50+ UPF rating which is the highest U.V protection rating available. Without this constant testing and certification materials can vary in their sun protection qualities because of fabric weight, weave and colour.



## QUALITY MATERIALS

The highest quality materials are utilized in the construction of Rip Curl's Rashvest range. Because fabric weight, weave and colour can vary in their performance properties and sun protection qualities, constant testing means we can certify the quality of all the materials we use.



## CHLORINE FRIENDLY

The pool is a great place to use Rip Curl Rashvest. Chlorine is a strong chemical that jeopardises the integrity of the elastane in the garment. Rip Curl now offers selected garments in Chlorine Friendly material, which will keep their structure, shape and performance even when worn in Chlorine swimming pools.



## XTRA LIFE LYCRA IN ALL GIRLS SWIM

If you're looking for durable swim, shop for clothes made with LYCRA® XTRA LIFE™ fiber. You'll enjoy long-lasting comfort, fit and shape with no bagging or sagging. In addition, swimwear made with this fiber is designed to resist damage from chlorine, lotions, UV rays and heat to last up to 10 times longer than swimsuits made with unprotected spandex.



# ICONS UV BRUSHED RASH VESTS

**BRUSHED INTERNAL FOR ADDED WARMTH ON THE BEACH**



**CHLORINE FRIENDLY**

**STRETCH FABRIC**

**HYDROPHOBIC QUICK DRY**

**MADE WITH RECYCLED POLYESTER**

**UPF 50+ UV SUN PROTECTION**

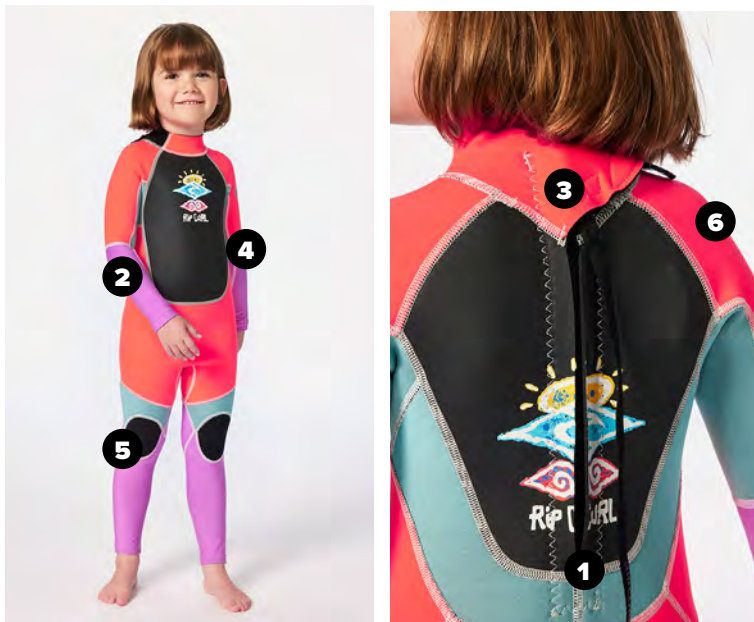
# KIDS IN-WATER INNOVATIONS

## EASY ON OFF

Make life easy with the Groms Omega Back Zip Easy On/Off Wetsuit. With stretchier Lycra, this is far easier to put on for those little ones. Protected from the sun and standing out in the bright contrasting colours, this is a must have.

### FEATURES:

- 1 Back Zip for easy entry and exit
- 2 Lycra panels for easier on and off
- 3 Adjustable neck collar for snug fit
- 4 Full length steamer for full UV protection
- 5 Durable Knee pads
- 6 Bright colours to stand out



## KIDS BEACH BOYANCY AID

Ideal for little groms who are not so water wise, this aid will assist you in your safety supervision of children around water.

### FEATURES:

- 1 Bouyancy panels front and back
- 2 Adjustable webbing chest straps for a snug fit
- 3 Padded crouch strap to secure the vest
- 4 Bright colours to stand out

This is a swim aid but not a approved PFD for boating, this must be used with supervision



# LIVE THE SEARCH

RIPCURL



STEPHANIE GILMORE 8X WORLD SURFING CHAMPION



Who invited you?  
Put your time in, pay your dues. Get up earlier, search further, take off deeper, charge harder. Jump the fence, crash the ~~fucking~~ party, steal a beer and have a load of fun along the way. There are no invites.

# TIPS TO SELL A WETSUIT



- 1 ESTABLISH THE CUSTOMER'S NEEDS:**

Determine the customer's wetsuit needs by asking about usage, season, frequency, and budget.

Some questions could be:

  - What will you be using the wetsuit for? Surfing? Stand Up Paddle Boarding? Beginner? Etc.
  - What time of year will you mainly use the wetsuit? Summer or winter?
  - How often will you use it?
  - What is your budget?
- 2 SELECT A FEW SUITS:**

Show the customer 2-3 wetsuits to avoid overwhelming them with choices.
- 3 EXPLAIN FEATURES AND BENEFITS:**

Highlight key features and benefits based on the customer's specific needs, like warmth or performance.
- 4 ENCOURAGE THEM TO TRY ON THE SUIT:**

Ensure they try on the right size and guide them to start with the best option. Help them with best ways/tips to get in & out of the suit.
- 5 CLOSE THE SALE:**

Reassure them of their choice, explain warranty, and remind them to keep proof of purchase.



# WETSUITS

FLASH/BOMB  
**FUSION**  
DRY SEAM TECHNOLOGY

**FLASH/BOMB**  
OUR FASTEST DRYING WETSUIT

**E-BOMB**  
THE ULTIMATE SUPER STRETCH WETSUIT

**DAWN PATROL**  
HIGH PERFORMANCE. DURABLE. GREAT VALUE

**OMEGA**  
QUALITY WETSUIT. ECONOMICAL PRICE

**TRAD**

WARMTH

WARMTH

SUPER STRETCH

WARMTH

QUALITY

BEGINNER



CHEST ZIP



CHEST ZIP



BACK ZIP - CHEST ZIP - ZIP FREE



BACK ZIP - CHEST ZIP



BACK ZIP



BACK ZIP

**ULTIMATE**

**CORE**

**CLASSIC**

The best wetsuit possible - featuring the most advanced neoprene & ocean technology.

A high performance & durable wetsuit with technical features.

Quality wetsuit from the leading brand with essential features at an economical price.



# WETSUITS

FLASH/BOMB  
**FUSION**  
DRY SEAM TECHNOLOGY

**FLASH/BOMB**  
OUR FASTEST DRYING WETSUIT

**E-BOMB**  
THE ULTIMATE SUPER STRETCH WETSUIT

**DAWN PATROL**  
HIGH PERFORMANCE. DURABLE. GREAT VALUE

**OMEGA**  
QUALITY WETSUIT. ECONOMICAL PRICE

**TRAD**

WARMTH

WARMTH

WARMTH & FLEXIBILITY

SUPER STRETCH

WARMTH

QUALITY

BEGINNER



CHEST ZIP



CHEST ZIP



ZIP FREE



BACK ZIP - CHEST ZIP - ZIP FREE



BACK ZIP - CHEST ZIP



BACK ZIP



BACK ZIP

**ULTIMATE**

The best wetsuit possible - featuring the most advanced neoprene & ocean technology.

**CORE**

A high performance & durable wetsuit with technical features.

**CLASSIC**

Quality wetsuit from the leading brand with essential features at an economical price.

# WETSUIT CARE TIPS



PROPER CARE CAN EXTEND YOUR WETSUIT'S LIFESPAN  
THE MAIN THINGS TO KEEP IN MIND FOR WETSUIT CARE ARE:

- 1 Put on and take off carefully.
- 2 Avoid as much contact with sand and ground as you can.
- 3 Wash with cold, fresh water after every surf.
- 4 Dry in the shade, starting inside-out.
- 5 Store in a cool, dry place on a wide hanger or lay flat.

<https://www.ripcurl.com/au/blog/wetsuit-care-guide.html>



# THE BEST WARRANTY & REPAIR SERVICE IN THE INDUSTRY

## RIP CURL WETSUIT WARRANTY

- 3 year warranty on all stitching
- 12 month warranty on materials

THE SPECIALIST TEAM IN OUR RIP CURL OWNED SERVICE CENTRE WILL TURN AROUND ALL REPAIRS IN 48 HOURS FROM RECEIVING THEM.

That means your customer will have their suit back in the shortest time possible.

Proof of purchase must be supplied to validate warranty.

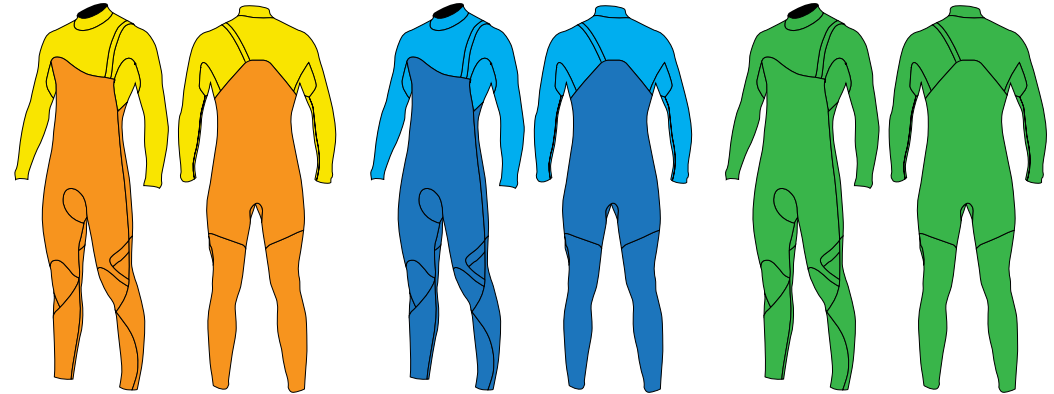
## NON WARRANTY WETSUIT REPAIRS

Our service centre will repair Rip Curl wetsuits that are out of warranty at a minimal cost.



## WETSUIT THICKNESSES

QUICK GUIDE TO WETSUIT WARMTH



**4/3mm Wetsuit**

4mm Rubber 3mm Rubber

### COLD WATER SUIT

Ideal winter suit, the thicker the rubber the more insulated you are from the cold elements

#### Suited to

Southern Australian Winters

**3/2mm Wetsuit**

3mm Rubber 2mm Rubber

### COLD TO TEMPERATE WATER SUIT

Ideal seasonal transition suit. Can be worn coming into and out of winter. Or through winter with boots and hood.

#### Suited to

Northern Australian Winters  
Southern Australian Autumn/Winter/Spring

**2/2mm Wetsuit**

2mm Rubber

### TEMPERATE TO MILD WATER SUIT

Thinner highly flexible suit suited to milder conditions. Helps reduce wind chill and colder air temps.

#### Suited to

Northern Australian Winters  
Southern Australian Summer/Autumn

## STITCH ME UP

QUICK GUIDE TO WETSUIT STITCHING TERMS

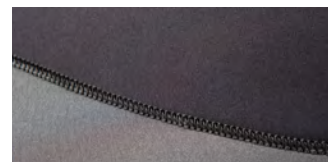
### SEALED SUITS

#### GLUED & BLIND STITCHED

##### WARMTH & NO LEAKAGE

Rather than actually puncturing both sides of the neoprene with a stitch, the two panels are glued together and then stitched at the top – reducing pinholes for water to enter.

The Blindstitched Seam means increased comfort, warmth and durability in cold water wetsuits.



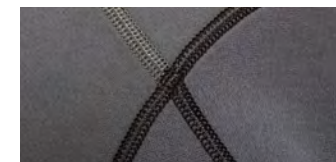
### UN-SEALED SUITS

#### FLATLOCK

##### DURABILITY

Six-needle stitch for a breathable, durable seam. Standard stitching for all wetsuits.

Allows water to seep through seams, usually used in summer wetsuits.



#### E-STITCH

##### FLEXIBILITY

Unique stitching allowing maximum stretch in seams. Lightweight, super stretch and smooth feel.

Allows water to seep through seams usually used in summer wetsuits, vests and jackets.





## ENVIRONMENTAL & SUSTAINABILITY INITIATIVES



### HANGER MADE FROM RECYCLED OCEAN BOUND PLASTIC BY "ARCH & HOOK"

It is estimated that 8 million metric tons of plastic trash ends up in our oceans every year.

90% of the plastic polluting our oceans comes from just 10 rivers, according to the World Economic Forum. This ocean bound plastic is the main source for the Arch & Hook BLUE® hanger program, collected predominantly from 4 of these 10 most polluting rivers in the world, plastic which would otherwise end up in the ocean.

The thermoplastics are collected, sorted, separated, shredded, transported and finally prepared as raw material suitable for production of the Rip Curl wetsuit hanger.

Rip Curl will reduce our consumption of virgin plastic by approximately 5 ½ tons per annum through the use of the new hanger. Furthermore, the hangers are independently certified as Marine Plastic under Global Recycling Standards by Textlie Exchange.



### THE RIP CURL MADE WITH SUSTAINABILITY IN MIND WETSUIT

Rip Curl wetsuits has and continues to be at the forefront of R&D to increase the sustainability of wetsuits and reducing their impact on our environment.

The Made With Sustainability in Mind wetsuits features recycled jersey materials while the unique foam is neoprene free and 50% plant based. It is also certified as 50% Biobased by the United States Department of Agriculture.



OWEN WRIGHT



### WATER USAGE REDUCTION

Traditional colouring processes of the jersey applied to the wetsuit foam are water intensive. A large majority of the Rip Curl wetsuit range uses Dope Dyeing, an innovative process that dyes the yarn and reduces water usage, energy and CO2 emissions.



### REDUCTION IN PLASTICS

Rip Curl has reduced the use of plastics in packaging of our wetsuits and accessories and is working on further reducing these in future ranges. Products that do require bags are now made with 30% recycled PE material, Break Down Plastic (BDP) additive and reduced to 30 micron, a 40% weight reduction from our previous version.

### WETSUIT RECYCLING PROGRAMS

For over 10 years, Rip Curl has been involved in Wetsuit recycling programs across different regions of the world. We continue to develop these programs and are encouraged with the progress that is being made.

### WETSUITS SERVICE & REPAIR CENTRES

One way to increase the sustainability of wetsuits is to extend the life of the product. Rip Curl owns state of the art repair facilities around the world that allow wetsuits to be repaired and in doing so extend the life of the wetsuit.

### RIP CURL WETSUIT FACTORY

To ensure Rip Curl wetsuits are manufactured to our high standards, Rip Curl owns a state of the art production facility. Sustainability and environmental programs implemented at the Rip Curl factory have and continue to reduce waste created in the production of wetsuits. Our goal is to be the leader in sustainable wetsuit manufacturing and in the coming years Rip Curl will invest even further into programs that will extend further the benefits of our sustainability and environmental manufacturing initiatives.



RIPCURL   
SEARCHGPS<sup>3</sup>

# TRACK EVERY WAVE, WIND, SWELL & TIDE

POWERED BY  Surflink



CONNECT WITH YOUR RIP CURL SEARCHGPS<sup>3</sup> WATCH OR APPLE WATCH®



DOWNLOAD THE RIP CURL SEARCHGPS APP

ERIN BROOKS



ALL RIP CURL WATCHES



# WATCH WARRANTY

1 year warranty on batteries.

2 years warranty on movements and waterproofing.





# F-LIGHT

LIGHTWEIGHT TRAVEL BAGS

# LIGHTER & CLEANER WAY TO SEARCH

Surfers carry enough gear around without bags weighing us down on The Search. Negotiating customs queues, trekking along beaches, jumping boat rails - you want to stay as light as possible while minimizing your environmental impact.

The F-Light series combines super-lightweight materials with ultra-durable construction to make surf travel that much easier. Hydro Protech fabric keeps water off your things, clip & connect add-ons let you easily carry extras, and recycled materials help protect the world you explore.

**LESS IMPACT ON THE PLANET. LESS WEIGHT ON YOUR SHOULDERS.**



50% RECYCLED POLYESTER

# F-LIGHT MIDNIGHT

## F-LIGHT GLOBAL SEARCH

INTERNATIONAL CHECK IN

**WEIGHT: 3.9kg**  
**LITRES: 100L**

## F-LIGHT CABIN SEARCH

DOMESTIC CARRY-ON

**WEIGHT: 2.4kg**  
**LITRES: 30L**

## F-LIGHT TRANSIT SEARCH

INTERNATIONAL CARRY-ON

**WEIGHT: 2.8kg**  
**LITRES: 45L**

## F-LIGHT POSSE SEARCH

DOMESTIC CARRY-ON

**WEIGHT: 1.1kg**  
**LITRES: 35L**



CLIP AND CONNECT  
MAKING TRAVEL EASIER



LIGHTWEIGHT  
CONSTRUCTION

**TOUGH**  
B A S E

LIGHTWEIGHT & DURABLE  
MOULDED EVA BASE

# F-LIGHT SEARCH REFLECT COLLECTION

Search light with a low-impact footprint. These featherweight bags use durable, recycled fabric and smart seam lines to maximise resilience.



**F-LIGHT GLOBAL ICONS**  
INTERNATIONAL CHECK IN

**WEIGHT: 3.9kg**  
**LITRES: 100L**



**F-LIGHT TRANSIT ICONS**  
INTERNATIONAL CARRY-ON

**WEIGHT: 2.8kg**  
**LITRES: 45L**



**F-LIGHT CABIN ICONS**  
DOMESTIC CARRY-ON

**WEIGHT: 2.4kg**  
**LITRES: 30L**



**F-LIGHT POSSE ICONS**  
DOMESTIC CARRY-ON

**WEIGHT: 1.1kg**  
**LITRES: 35L**



CLIP AND CONNECT  
MAKING TRAVEL EASIER



LIGHTWEIGHT  
CONSTRUCTION



LIGHTWEIGHT & DURABLE  
MOULDED EVA BASE

# 4 WHEEL

## F-LIGHT

Introducing your smoothest Search yet. Alongside durable, recycled fabric, these featherweight bags feature four swivel wheels for effortless movement.



**F-LIGHT 4 WHEEL CHECK-IN**  
INTERNATIONAL CHECK-IN SIZE

**WEIGHT: 4.2kg**  
**LITRES: 90L**

**F-LIGHT 4 WHEEL CARRY-ON**  
DOMESTIC CARRY-ON SIZE

**WEIGHT: 3.4kg**  
**LITRES: 40L**



4 SMOOTH  
SWIVEL WHEELS



LIGHTWEIGHT  
TELESCOPIC HANDLES



LIGHTWEIGHT & DURABLE  
MOULDED EVA BASE



DURABLE POLYESTER  
FABRIC

# F-LIGHT Hybrid 70L

**CORDURA**



- A** Telescopic handle
- B** Padded back panel & harness with sternum strap
- C** External compression straps
- D** Cordura® Recycled Poly
- E** Lockable zips
- F** Multiple carry options
- G** Internal Compression straps
- H** Self-standing
- I** Off Road Inline skate wheels
- J** Weight - 3.3kg / 7.3lb

Versatility is  
the new  
Lightweight



**RIPCURL**

TRAVEL BAGS TO LIVE THE SEARCH.

# SEARCH PACKABLES

**Built for the Search, the Search Packable Backpack has been engineered with surf adventure in mind.**



## **FEATURES**

- **Lightweight 300g**
- **Recycled polyester**
- **Breathable airmesh harness and back panel**
- **Multiple organizer and utility pockets**
- **External compression straps**
- **Elastic drink bottle pocket**
- **Packs into internal pocket**



Rip Curl has now cleaned more than 50 Million litres of water in the Bloom Cleanwater Challenge



Rip Curl total global eco-facts™ for FY25

Determined by a third-party conducted and peer-reviewed Life Cycle Assessment.

Litres of water cleaned:  
**58,102,099**

Kilograms of CO<sub>2</sub> equivalent:  
**43,924**



Scan this QR code to see how much water and air this product cleaned!

The BLOOM™ materials in one pair of flip flops result in the average following eco-facts™

Litres of water cleaned and restored to the environment:  
**131.7**

Cubic metres of air were cleaned to capture  
**136.6**

**99.6**  
Grams of carbon dioxide



Based on a pair of flip flops weighing 390 grams with 15% BLOOM RISE™



**RIP CURL AUSTRALIA  
SERVICE CENTRE**

101 Surfcoast Hwy, Torquay, Vic. 3228  
Tel: 03 5261 0022  
Hours, 9am to 5.00 pm Mon-Fri E.S.T.  
Email: [au.servicecentre@ripcurl.com](mailto:au.servicecentre@ripcurl.com)