



## INSTALLATION MANUAL FOR

### JEEP JT GLADIATOR SAVVY HIGH CLEARANCE REAR INNER FENDERS SD0028



**BEFORE POWDERCOATING OR PAINTING OR INSTALLING CHECK TO MAKE SURE YOU HAVE ALL THE CORRECT PARTS AND TEST FIT PARTS TO ENSURE PROPER FITMENT IF THERE ARE ISSUES**

**\*\*\*\*\*PLEASE CONTACT US \*\*\*\*\***

**SAVVYOFFROAD.COM OR 801-876-9599**

Dear customer: Thank you for purchasing our High Clearance Rear Inner Fenders for your Jeep Vehicle. We are sure you will be happy with your High Clearance Inners after your installation is complete. Please take your time during the installation and be sure to do it correctly. Completely read the directions before starting your installation so you know what to expect. If you have any questions, call (801-876-9599).

**AGAIN, IF YOU ARE MISSING ANYTHING PLEASE CALL US RIGHT AWAY BEFORE INSTALLING AND TEST FITTING. BEFORE POWDERCOATING OR PAINTING OR INSTALLING CHECK TO MAKE SURE YOU HAVE ALL THE CORRECT PARTS AND TEST FIT PARTS TO ENSURE PROPER FITMENT. IF THERE ARE ISSUES, PLEASE CONTACT US AT SAVVYOFFROAD.COM WE WILL NOT TAKE BACK OR SWAP OUT PARTS THAT HAVE BEEN POWDER COATED!**

### **How to Remove the Jeep JT GLADIATOR Rear Stock Inner Fenders**

#### **Tools Needed:**

**10MM Socket & Ratchet & 4-6" extension**

**8MM Socket**

**Flathead screwdriver or plastic trim removal tool**

**T25/T30 Torx bit (varies by trim/mudflaps)**

**Needle-nose pliers or small pick (for stubborn clips)**

#### **Step 1: Identify Fasteners**

Locate the plastic push clips and any 8 mm/10 mm screws (and T25/T30 Torx screws if equipped with mudflaps/splash guards) around the rear wheel arch and inside the liner.

#### **Step 2: Remove Mudflap/Splash-Guard Hardware (If Equipped)**

Along the rear edge of the wheel opening, remove the Torx screws and/or 8 mm bolts holding the mudflap to the liner and body. Set hardware aside.

#### **Step 3: Remove Fender-Lip Screws/Clips**

Working from bottom to top, remove the 8 mm screws (or plastic push clips, depending on trim) along the fender lip where the liner meets the flare.

#### **Step 4: Remove Inner Push Clips**

Inside the wheel well, use a trim tool to pop out the plastic push clips securing the liner to the body. There are several across the top and front edges.

If a clip spins, grab the back side with needle-nose pliers while prying the head.

Keep clips organized; replace any that break.

#### **Step 5: Free Any Retained Tabs/Anchors**

Gently pull the liner away and check for any plastic “Christmas-tree” retainers or tabs that remain engaged. Release them carefully to avoid tearing the liner.

#### **Step 6: Clear Tight Areas (Fuel Filler Side – Driver Rear)**

On the driver side, the liner wraps near the fuel filler pocket. Flex the liner slightly and work it around this area, don’t force it.

#### **Step 7: Remove the Liner**

Once all fasteners are out, pull the lower edge toward you and rotate the liner down and out of the wheel well.





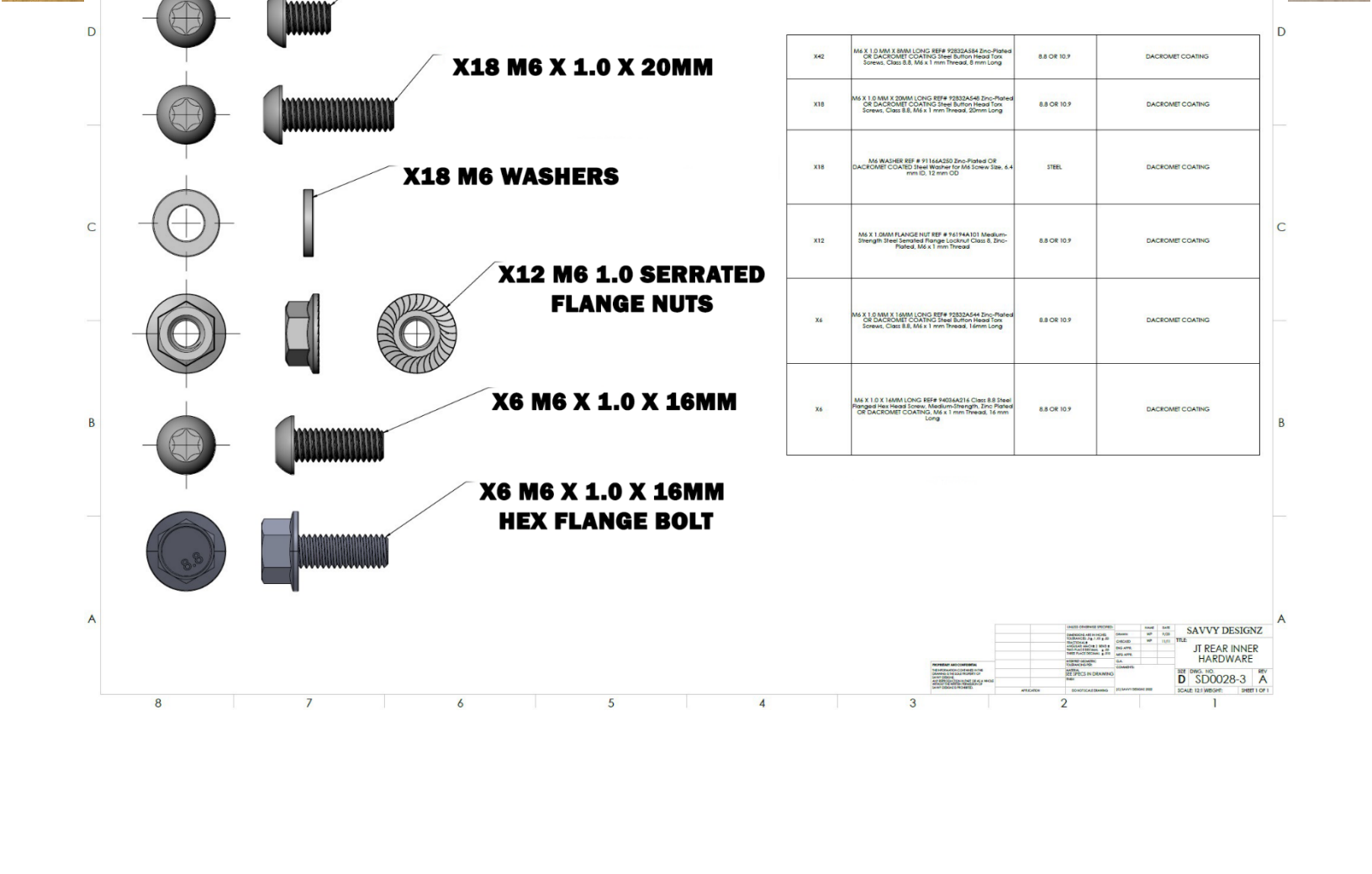
**DRIVERS SIDE**

**PASSENGER SIDE**

**SAVVY**

**SAVVY**

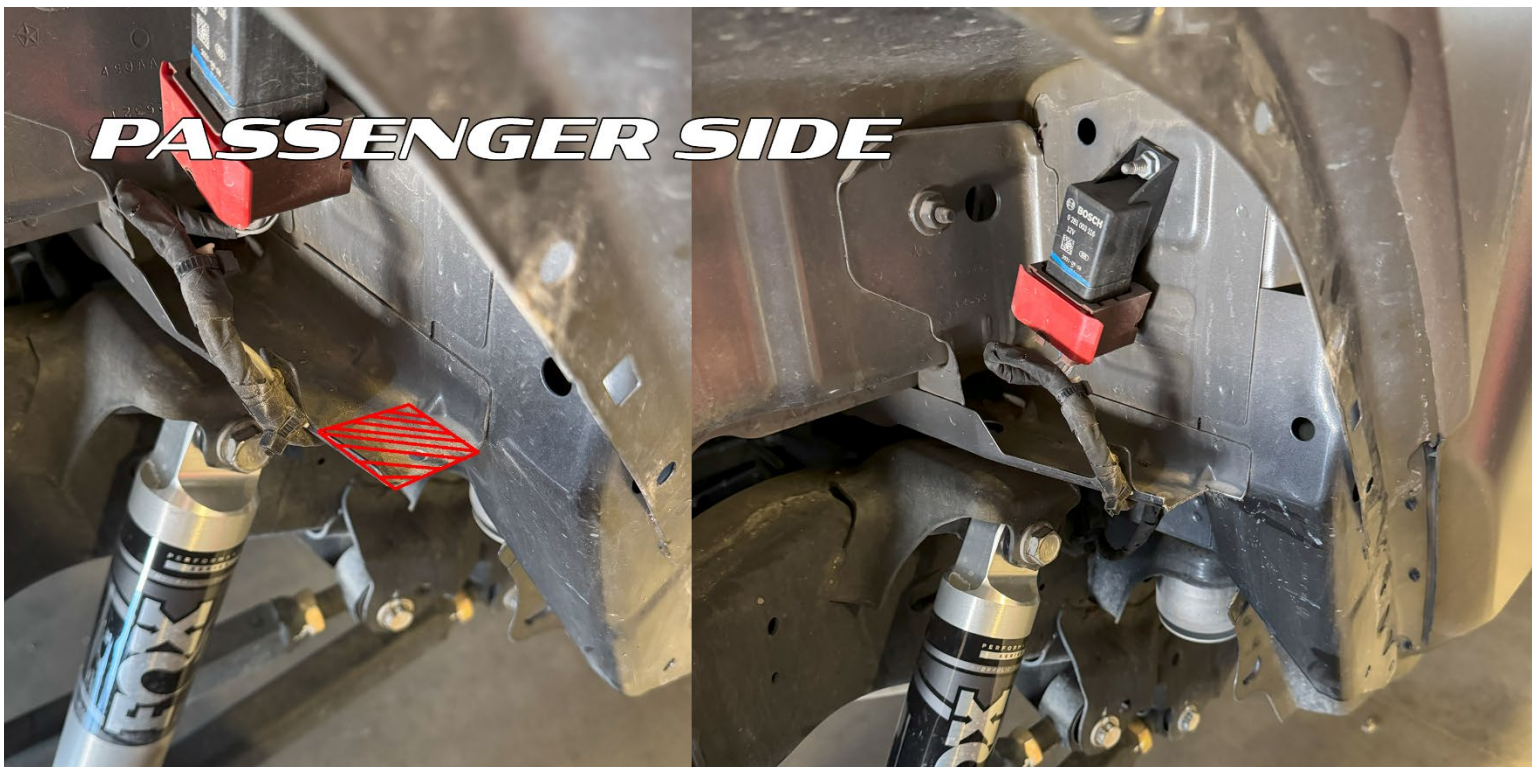
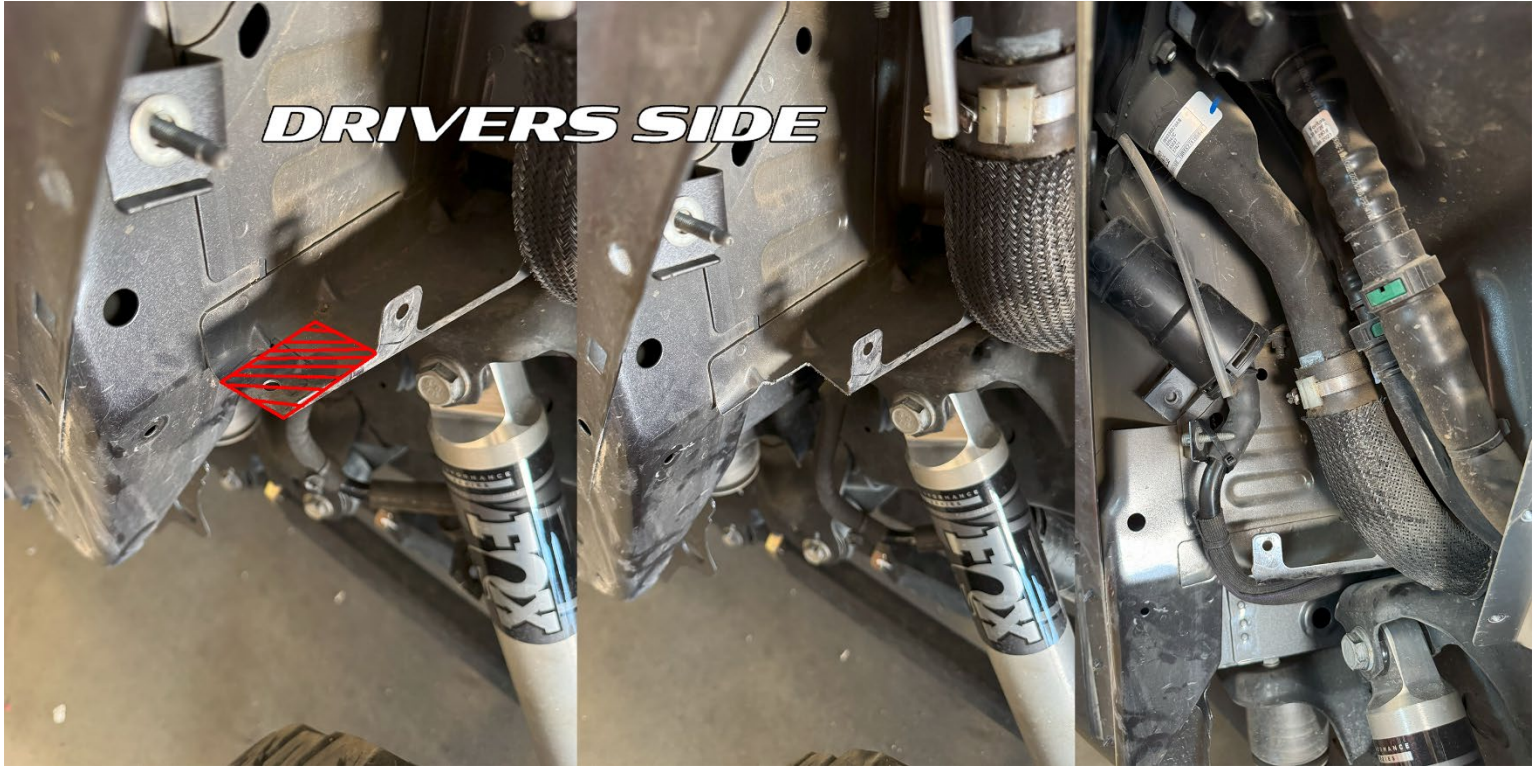
**X42 M6 X 1.0 X 8MM**





## PREPERATION

ON BOTH THE DRIVER AND PASSENGER SIDE, CUT AND REMOVE THIS SECTION OF THE BRACKET TO ALLOW FOR ENOUGH CLEARANCE FOR THE INNER FENDER. PAINT ANY EXPOSED METAL TO PREVENT CORROSION.





## BEGIN INSTALL OF THE SAVVY HIGH CLEARANCE REAR INNERS

### Tools Needed:

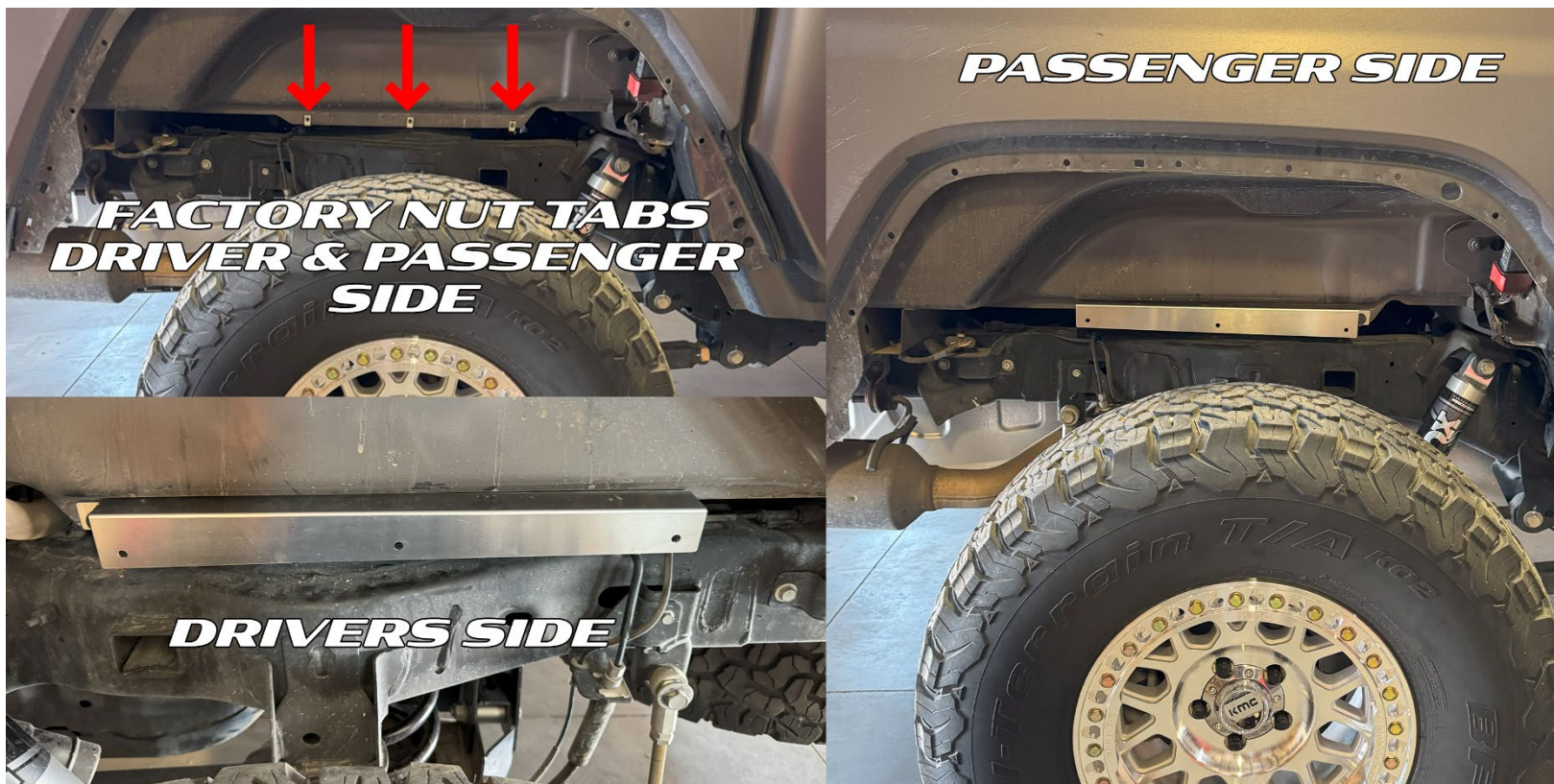
Grinder or Sawzall or Air Body Saw

T30 Torx bit

8MM & 10MM Sockets and Wrenches

### STEP 1: INSTALL THE BED PINCH SEAM SPACER (DRIVERS SIDE & PASSENGER SIDE)

Using either the six (6) M6 factory bolts that you removed from the plastic inner fender or the six (6) M6 flange hex bolts provided in the hardware kit, install the bed pinch seam spacer. Ensure that the longer section of the rear flange is oriented facing forward toward the front of the vehicle, as shown in the reference image below.



### STEP 2: INSTALL THE BED SIDE INNER FENDER PANEL (DRIVERS SIDE & PASSENGER SIDE)

Using eighteen (18) M6 x 1.0 x 20mm Torx button head bolts and eighteen (18) M6 washers, install the bedside inner fender panel nine (9) fasteners on the driver's side and nine (9) on the passenger's side. For now, only snug two (2) bolts per side; leave the remaining hardware loose to allow for reinstallation of the fender as needed.





**STEP 3: INSTALL THE REAR INNER FENDER BACK PANEL (DRIVERS SIDE & PASSENGER SIDE)**

Loosely install the rear inner fender back panel using three (3) M6 x 1.0 x 16mm Torx button head bolts and three (3) M6 x 1.0 serrated flange nuts per side, attaching the panel to the bed pinch seam spacer. Keep this panel loosely fastened until all components are in place, this will help prevent alignment issues during final installation.





**STEP 4: INSTALL THE FRONT TOP INNER FENDER PANEL (DRIVERS SIDE & PASSENGER SIDE)**

Using twelve (12) M6 x 1.0 x 8mm Torx button head bolts per side, loosely install the front top inner fender panel. Do not fully tighten this panel, leave all hardware loose until all panels are installed to ensure proper fitment and alignment.



**STEP 5: INSTALL THE REAR TOP INNER FENDER PANEL (DRIVERS SIDE & PASSENGER SIDE)**

Using nine (9) M6 x 1.0 x 8mm Torx button head bolts per side, loosely install the rear top inner fender panel. Do not fully tighten this panel, leave all hardware loose until all panels are installed to ensure proper fitment and alignment.





#### **STEP 5: RE INSTALL THE FENDER (DRIVERS SIDE & PASSENGER SIDE)**

With all panels loosely in place, remove the outer bed M6 button head bolts and reinstall them through your factory or aftermarket fender. Once the fender is securely reinstalled, go back and tighten all remaining M6 Torx button head bolts to complete the installation.



#### **STEP 7: FINAL CHECK**

Inspect for rubbing or rattles.

Take a short drive and recheck all bolts in a day or two

## **Installation Complete – Your Jeep JT Gladiator Now Has More Clearance**

Congratulations! You've just installed the highest clearance rear inner fenders in the world, giving you unmatched clearance and ultimate off-road capability.

Now, get out there and hit the trails! If you have any questions or need assistance, don't hesitate to reach out. [WWW.SAVVYOFFROAD.COM](http://WWW.SAVVYOFFROAD.COM) OR Call: 801-876-9599 See you on the trails!