



**INSTALLATION MANUAL FOR
JEEP JL/JLU SAVVY ALUMINUM SPARE TIRE DELETE & CAMERA MOUNT SD0014**



BEFORE POWDERCOATING OR PAINTING OR INSTALING CHECK TO MAKE SURE YOU HAVE ALL THE CORRECT PARTS AND TEST FIT PARTS TO ENSURE PROPER FITMENT IF THERE ARE ISSUES

*******PLEASE CONTACT US *******

SAVVYOFFROAD.COM OR 801-876-9599

Dear customer: Thank you for purchasing our Spare Tire Delete system for your Jeep Vehicle. We are sure you will be happy with this spare tire delete after your installation is complete. Please take your time during the installation and be sure to do it correctly. Completely read the directions before starting your installation so you know what to expect. If you have any questions, call (801-876-9599).

AGAIN, IF YOU ARE MISSING ANYTHING PLEASE CALL US RIGHT AWAY BEFORE INSTALLING AND TEST FITTING. BEFORE POWDERCOATING OR PAINTING OR INSTALING CHECK TO MAKE SURE YOU HAVE ALL THE CORRECT PARTS AND TEST FIT PARTS TO ENSURE PROPER FITMENT. IF THERE ARE ISSUES, PLEASE CONTACT US AT SAVVYOFFROAD.COM WE WILL NOT TAKE BACK OR SWAP OUT PARTS THAT HAVE BEEN POWDER COATED!

How to Remove the Jeep JL/JLU Spare Tire Mount for a Spare Tire Delete

Tools Needed:

13mm, 7/8" socket and ratchet

1/2" socket and ratchet (for optional brake light removal)

Torx T9, T25 & T40 bit (for optional camera removal)

Flathead screwdriver or plastic trim removal tool

10mm wrench (if relocating the camera harness)

Step 1: Remove The Spare Tire

- Use the T40 Torx to remove the camera protector / cover.
- Use the 7/8" or 21MM socket to remove the 3 lug nuts from the spare tire.

Step 2: Disconnect the Wiring Harness

- Open your Jeep's tailgate.
- Remove the Tailgate panel by gently popping it off with a flathead screwdriver or plastic trim removal tool
- Locate the rubber wiring grommet inside the tailgate.
- Gently pry the grommet out using a flathead screwdriver or trim removal tool.
- Unplug the third brake light and backup camera connectors from the harness.
- Carefully push the disconnected wiring back through the tailgate hole.

Step 3: Remove the Spare Tire Mount

- Use a 13mm socket and ratchet to remove the eight bolts securing the spare tire mount to the tailgate. (SAVE THESE BOLT TO RE USE ON THE SPARE TIRE DELETE)
- Carefully pull the spare tire mount away from the tailgate, guiding the wiring through the hole to avoid damage.

Step 4: Remove the Backup Camera (Optional)

- Using the Torx T25 bit, remove the screws by holding the camera cover and wheel studs on the spare tire mount.
- Gently unscrew using the T9 torx and detach the camera housing and unplug the camera from the connector.
- Set the camera safely aside

Step 5: Clean and Prepare Tailgate

- Clean the exposed tailgate surface thoroughly to remove dirt and debris.

BEGIN INSTALL OF THE SAVVY SPARE TIRE DELETE

Step 1: Install The Factory Camera Into The Camera Mount

- For 2018-2020 Cameras see diagram for camera mounting.
- For 2021+ Cameras see diagram for camera mounting.
- For 2018-2020 you will sandwich the camera between SD0014-1C and the camera housing SD0014-1B
- For 2021+ you will use the two extra plates SD0014-1D which goes on the back side of the camera and SD0014-1E which goes on the front side of the camera sandwiching the camera between the two plates use the supplied hardware to bolts the camera to SD0014-1C and install the assembly into SD0014-1B housing.
- Now install the camera mount onto the spare tire delete plate SD0014-1A

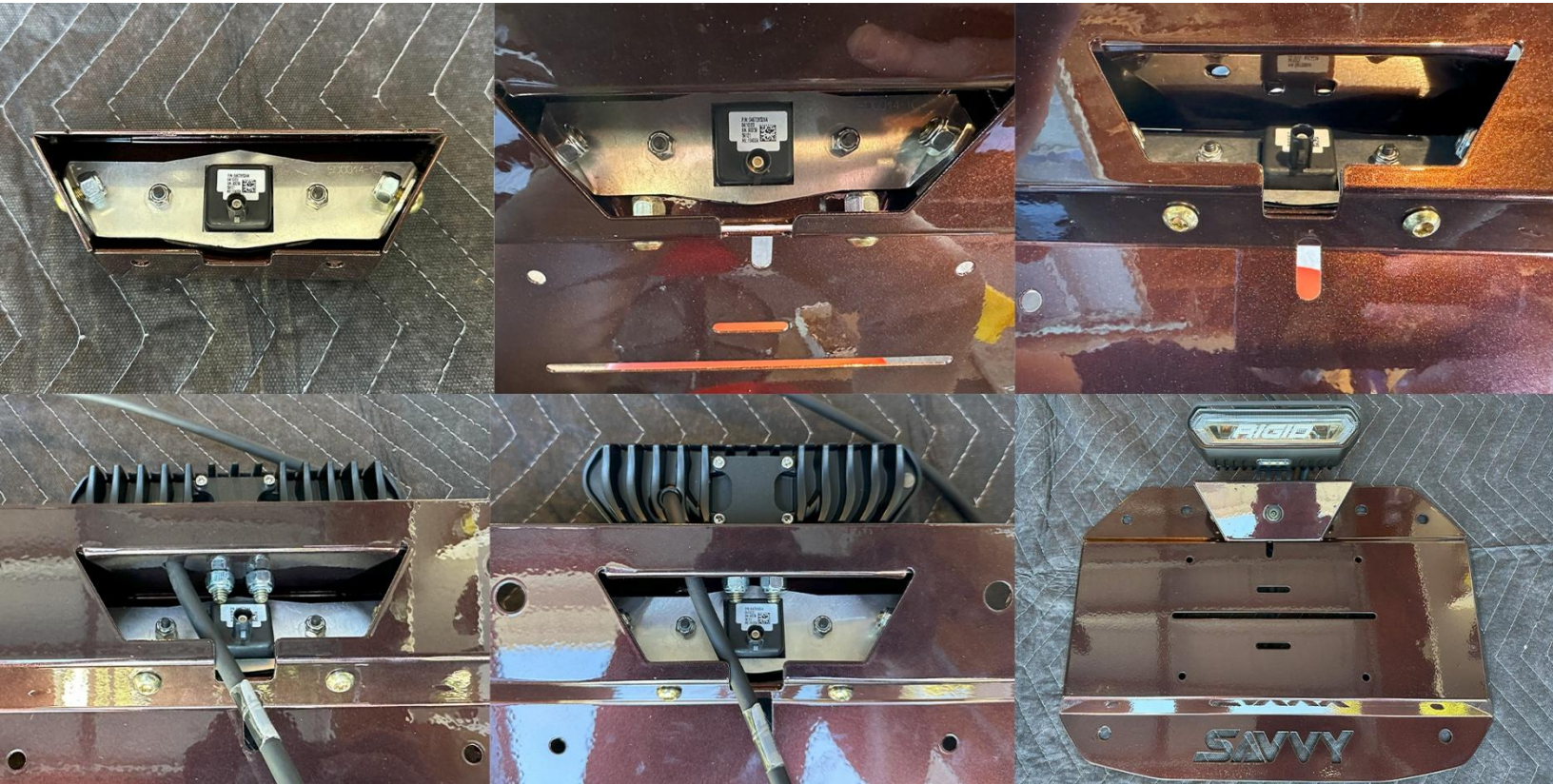
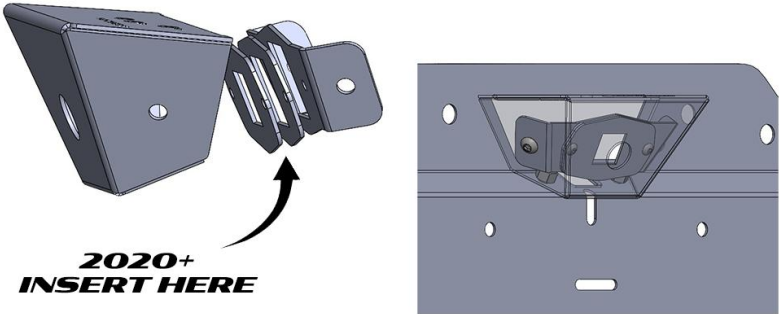
Camera Identification



2018-2020



2021 +

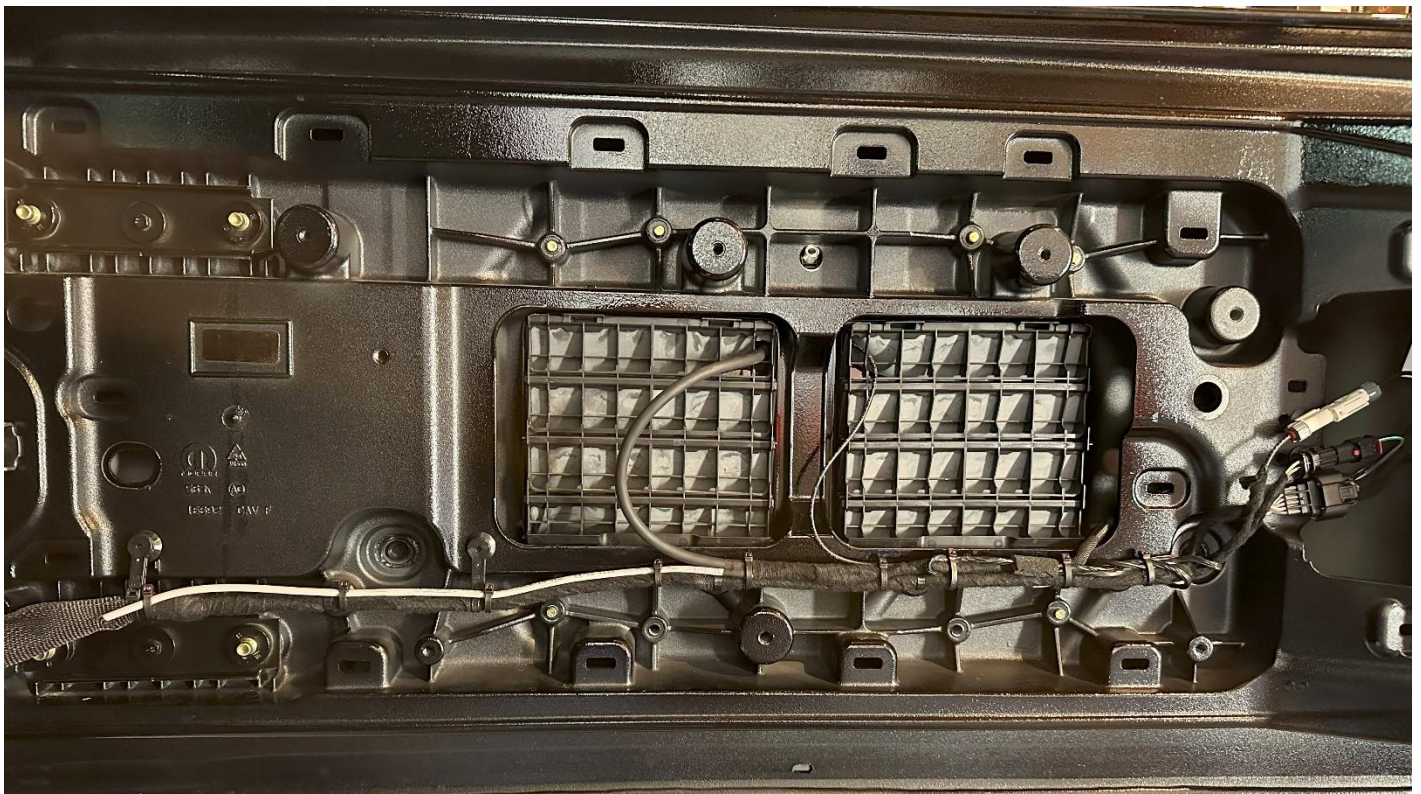


Step 2: Install Optional 3rd Brake Light

- If you're planning to install a third brake light or license plate lights, such as Rigid Chase Light or the ORU lighting kit, now is the perfect time to complete that step.
- For the Rigid Chase light use the drill template on top of the camera housing to drill the extra holes needed to attach the chase light. It is best to do this before you install the camera. If you have installed the camera, be very careful drilling the top mount.
- If you are not installing the rigid chase light, install the single M6 torx button head on the top of the camera mount to secure it to the spare tire delete mount.
- For the ORU light feed the wiring through the front slot in the spare tire delete.

Step 3: Install the Spare Tire Delete on the Tailgate

- Now that you have the spare tire delete fully assembled, feed the wires through the tailgate and re connect the camera. Then position the delete correctly on the tailgate. Secure the delete plate using the factory bolts from the spare tire mount.
- Finish wiring the Rigid Chase light or the ORU Plate light kit using their wiring instructions and splicing into the correct factory wires.
- After wiring is completed re install the Tailgate panel onto the Jeep.



Final Checks:

- Ensure all bolts are tightened properly.
- Verify that wiring is secure and properly routed.
- Close your tailgate and inspect the final appearance.

Installation Complete – Your Jeep JL/JLU Now Has More Clearance

Congratulations! You've just installed the cleanest fitting and best looking Spare Tire Delete in the world, giving you unmatched clearance and ultimate off-road capability.

Now, get out there and hit the trails! If you have any questions or need assistance, don't hesitate to reach out. WWW.SAVVYOFFROAD.COM OR Call: 801-876-9599 See you on the trails!