

# INSTALLATION INSTRUCTIONS

MADE IN  
USA



## MOUNTAINS<sup>2</sup>METAL



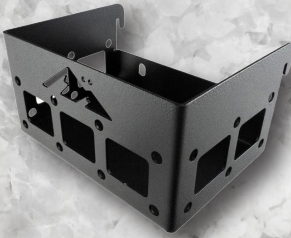
@MOUNTAINS2METAL

**MOLLE PANEL  
STORAGE BINS  
(5.75", 7.25", 10.5", 15.5")**

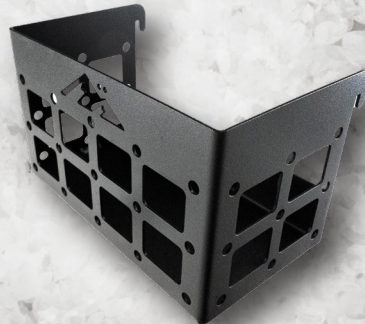
**UPDATED HARDWARE**



**Molle Glasses Holder (7.25)**



**Molle Panel Storage Bin(5.75)**



**Molle Panel Storage Bin(7.25)**



**Molle Panel Storage Bin(10.5)**



**Molle Panel Storage Bin(15.5)**



**Molle Panel Storage Bin(15.5x5.75)**

*We are making an important update to the hardware included with our Molle Panel Storage Bins. Instead of the traditional bolts and nuts we've been providing, we are transitioning to using small zip ties to secure the bins to the panels. This change is designed to enhance the versatility and ease of use of the storage bins, as zip ties offer a simple, effective way to mount the bins on any Molle-compatible panel, not just those from our brand.*

*By switching to zip ties, we aim to provide a more universal solution, allowing our customers to use the storage bins with a wider range of Molle panels, regardless of the manufacturer. This approach ensures that the bins can be securely attached to any panel with a standard Molle grid, making them more adaptable and convenient for a variety of gear setups. We believe this change will improve the overall user experience, making the bins easier to install and more accessible for everyone.*

---

