



**INSTALLATION MANUAL FOR  
JEEP JL/JLU SAVVY ALUMINUM REAR TRIM KIT SD0015**



**BEFORE POWDERCOATING OR PAINTING OR INSTALLING CHECK TO MAKE SURE YOU HAVE ALL  
THE CORRECT PARTS AND TEST FIT PARTS TO ENSURE PROPER FITMENT IF THERE ARE ISSUES**

**\*\*\*\*\*PLEASE CONTACT US \*\*\*\*\***

**SAVVYOFFROAD.COM OR 801-876-9599**

Dear customer: Thank you for purchasing our Aluminum Rear Trim Kit system for your Jeep Vehicle. We are sure you will be happy with this rear trim kit after your installation is complete. Please take your time during the installation and be sure to do it correctly. Completely read the directions before starting your installation so you know what to expect. If you have any questions, call (801-876-9599).

**THIS INSTALL IS EASIEST TO DO BEFORE INSTALLING THE REAR BUMPER OR WITH THE REAR BUMPER OFF**

## HARDWARE LIST

VERSION 2  
(X21) M6 X 1.0 X 16MM LONG TORX FLAT HEAD  
(X10) M6 X 1.0 NYLOCK NUT  
(X10) M6 WASHERS  
(X11) M6 X 1.0 REV NUTS

(X1) SD0015-1A (BELOW TAILGATE PIECE)  
(X1) SD0015-1B (PASSENGER SIDE CORNER CAP)  
(X1) SD0015-1C (DRIVERS SIDE CORNER CAP)

SD0015-1B (PASSENGER SIDE CORNER CAP)

SD0015-1A (BOTTOM TAILGATE CAP)

SD0015-1C (DRIVERS SIDE CORNER CAP)

		SAVVY OFFROAD	
	SD0015 INSTRUCTIONS		
D	SD0015	A	

**Tools Needed:**

**25/64<sup>th</sup> DRILL BIT**

**1/4" DRILL BIT**

**POWER DRILL**

**RIV NUT TOOL WITH ¼ 20 or M6 1.0 INSTALL BITS (V1 is ¼ 20 – V2 is M6)**

**T30 TORX BIT**

**7/16" wrench for V1 and 10MM wrench for V2**

**Minimum X2 Vise Grip Locking C Clamps Or X2 C clamps**

**Clean and prepare the mounting surface. If you're concerned about scratching your Jeep's paint, wrap the area with painter's masking tape for an extra layer of protection during installation.**

**BEGIN INSTALL OF THE REAR TRIM KIT**

**Step 1: CORNER CAPS**

**Begin with either the driver or passenger side corner cap. Position the cap so the bottom edge lines up with the bottom of the Jeep body and the front edge follows the fender line. Once aligned, clamp the corner cap securely to the Jeep body. If you have more than two clamps, secure both sides at the same time. If not, clamp one side first, then the other.**

**PASSENGER SIDE**





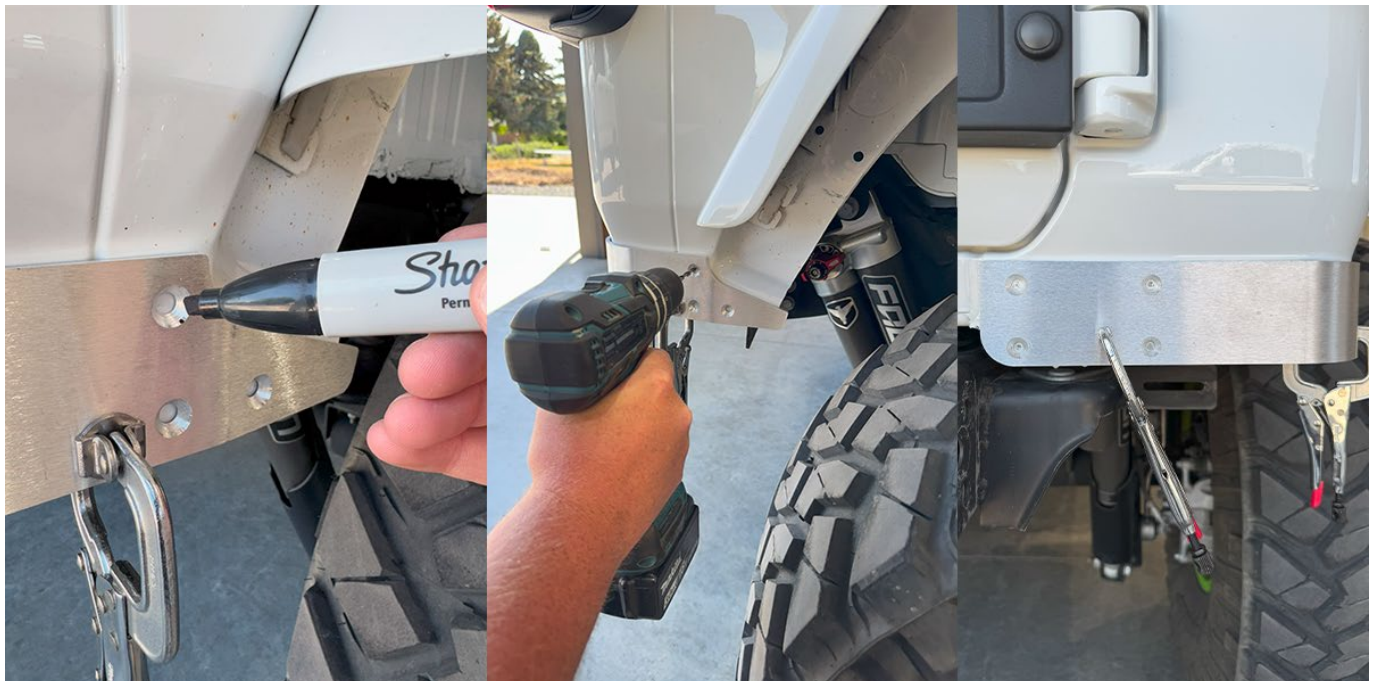
## DRIVERS SIDE



## Step 2: MARK AND DRILL MOUNTING HOLES

Mark and drill the mounting holes. We recommend starting with a 1/4" drill bit to make pilot holes. This can be done with the corner piece either on or off the vehicle. Once you have drilled the pilot holes if you have not already done so remove the aluminum corner piece.

## PASSENGER SIDE





## DRIVERS SIDE



### Step 3: DRILL & INSTALL RIV NUTS

Once the corner caps have been removed, drill out the marked holes to 25/64" where Riv Nuts will be installed. Insert and install the corner Riv Nuts in these locations. Refer to the image below for exact Riv Nut placement.



#### STEP 4: INSTALL CORNER CAPS

Using the M6 T30 Torx Countersink bolts reinstall the corner caps. For any mounting points not using Riv Nuts, secure the caps with the provided washers, and nuts. NOTE: (if you have trimmed the rear of your fender for extra tire clearance now would be the time to mark and trim the corner caps to match the body trim before you re install them permanently).



#### STEP 5: ALIGN THE CENTER TRIM PIECE, MARK & DRILL

With the help of a second person (recommended), position the center trim piece between the two corner caps. Make sure the gap between the caps is even, and that the corners of the center trim piece line up cleanly with the corners of the corner caps. A straight edge can also be used to ensure perfect alignment. Take your time with this step, the more precise the alignment, the cleaner the final fit will be. Once properly aligned, mark and drill the mounting holes. If you have a helper, they can hold the trim piece steady while you drill the pilot holes. After the pilot holes are drilled, remove the center trim piece and enlarge the 7 holes to 25/64", then install the Riv Nuts. All seven holes can be drilled for Riv Nuts. However, some of these holes are accessible from inside the rear of the Jeep. If you prefer not to use Riv Nuts in those positions, you can instead secure the trim piece using M6 nuts and washers (not included).

**Tech Tip:** If you're installing solo, align the center trim piece the drill and install the center bolt first. This will hold the trim piece in place, making it much easier to line up the edges and drill the remaining holes (see image below).







## STEP 6: INSTALL THE CENTER TRIM PIECE

Using the supplied M6 countersunk bolts with a T30 Torx head, secure the center trim piece in place. Make sure all bolts are tightened evenly for a clean, flush fit.



## FINAL NOTES:

- Ensure all bolts are tightened properly.
- Close your tailgate and inspect the final appearance.

## Installation Complete – Your Jeep JL/JLU Now Has More Protection

Congratulations! You've just installed the cleanest fitting and best-looking Rear Trim Kit & Corner Guards in the world, giving you unmatched clearance and ultimate off-road capability.

Now, get out there and hit the trails! If you have any questions or need assistance, don't hesitate to reach out. [WWW.SAVVYOFFROAD.COM](http://WWW.SAVVYOFFROAD.COM) OR Call: 801-876-9599 See you on the trails!