



**INSTALLATION MANUAL FOR
SAVVY KRAWLER LITE SD0039 & LEGACY JEEP JT GLADIATOR REAR BUMPER SD0068**



BEFORE POWDERCOATING OR PAINTING OR INSTALING CHECK TO MAKE SURE YOU HAVE ALL THE CORRECT PARTS AND TEST FIT PARTS TO ENSURE PROPER FITMENT IF THERE ARE ISSUES

*******PLEASE CONTACT US *******

SAVVYOFFROAD.COM OR 801-876-9599

Dear customer: Thank you for purchasing our bumper system for your Jeep Vehicle. We are sure you will be happy with this system after your installation is complete. Please take your time during the installation and be sure to do it correctly. Completely read the directions before starting your installation so you know what to expect. If you have any questions, call (801-876-9599).

Note: BE SURE TO CHECK ALL FASTENERS FOR PROPER TORQUE BEFORE TEST DRIVE. RECHECK AFTER 500 MILES AND BE SURE TO CHECK PERIODICALLY

WARNING

- Properly block and secure vehicle prior to installation.
- Always wear safety glasses when using power tools.
- SAVVY recommends the use of Loctite on all hardware, unless noted otherwise.
- Read and understand all instructions, warnings and safety precautions in these instructions and your owner's manual before attempting to install these components. Inspect all parts for damage or defects before installation.
- Proper installation of SAVVY products requires knowledge of recommended procedures for disassembly/assembly of OE vehicles and components. Access to OE shop manuals and special tools are required. Attempting to install this kit without knowledge of these procedures may affect the safety of your vehicle and or the performance of these components. SAVVY strongly recommends that this system be installed by a certified mechanic with off-road experience.

Tool Disclaimer

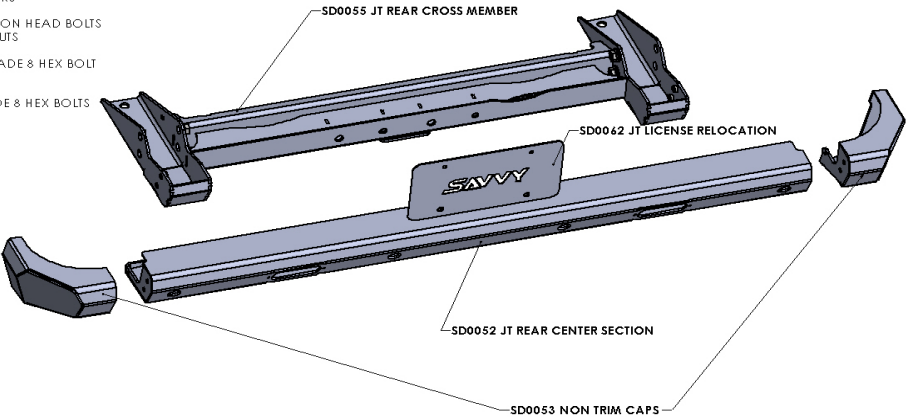
The installation of your vehicle's bumpers will require the use of power tools to safely and successfully complete the modifications. For your convenience, we have prepared a small list of tools which are either required or helpful for the installation of your JEEP JT GLADIATOR Rear Bumpers. Always use trustworthy tools.

- Angle Grinder with cutoff wheel / Sawzall (FOR HIGH CLEARANCE VERSION)
- Ratchet and socket set (10mm, 13mm, 18mm, 21mm)
- Torx bit set (T15, T40)
- Flathead screwdriver or trim removal tool
- Pliers

PACKAGE CONTENTS SD0039

HARDWARE LIST

- (X4) 14 MM 2.0 FLANGE NUTS
- (X2) .1875" THICK .875" OD .40 THROUGH HOLE ALUMINUM WASHERS
- (X4) 3/8" X .750" LONG GRADE 8 HEX BOLTS
- (X4) 3/8" SAE WASHERS
- (X4) BUMPER SENSOR PLUGS
- (X4) BUMPER SENSOR HOLDERS
- (X2) CONE RUBBER SPACER
- (X4) 1/4 20 X 1/2" LONG BUTTON HEAD BOLTS
- (X2) 1/4" 20 FLANGE LOCK NUTS
- (X2) LICENSE PLATE LIGHTS
- (X2) 1/4" 20 X 3/4" LONG GRADE 8 HEX BOLT
- (X2) 1/4" SAE WASHER
- (X2) 1/4" 20 NYLOCK NUTS
- (X4) 3/8" 16 X 1" LONG GRADE 8 HEX BOLTS
- (X8) 3/8" SAE WASHER
- (X4) 3/8" 16 NYLOCK NUTS

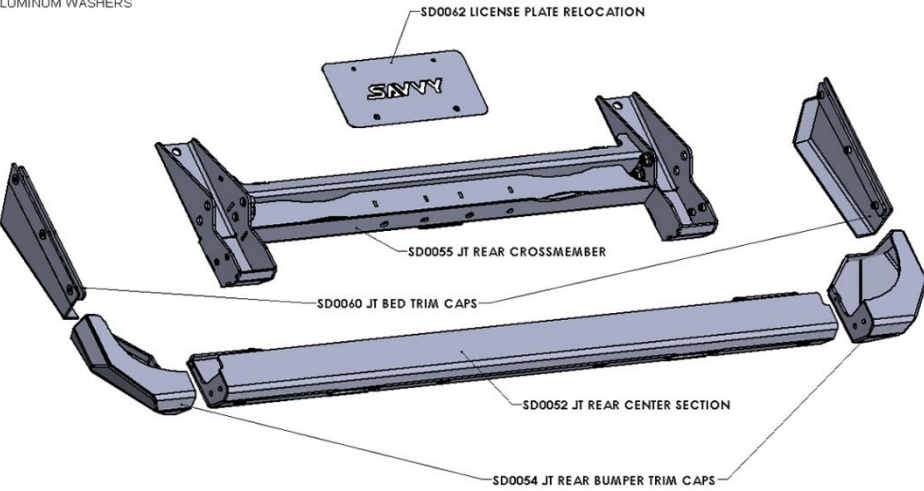


REVISIONS		DATE	BY	SAVVY OFFROAD
1	INITIAL RELEASE	11/15/2017	SAVVY	SD0039
INSTRUCTIONS		DATE	BY	SAVVY OFFROAD
1	INITIAL RELEASE	11/15/2017	SAVVY	SD0039
D		DATE	BY	SAVVY OFFROAD
1	INITIAL RELEASE	11/15/2017	SAVVY	SD0039

PACKAGE CONTENTS SD0068

HARDWARE LIST

- (X4) 14 MM 2.0 FLANGE NUTS
- (X2) .1875" THICK .875" OD .40 THROUGH HOLE ALUMINUM WASHERS
- (X4) 3/8" X .750" LONG GRADE 8 HEX BOLTS
- (X4) 3/8" SAE WASHERS
- (X4) BUMPER SENSOR PLUGS
- (X4) BUMPER SENSOR HOLDERS
- (X2) CONE RUBBER SPACER
- (X4) 1/4 20 X 1/2" LONG BUTTON HEAD BOLTS
- (X2) 1/4" 20 FLANGE LOCK NUTS
- (X2) LICENSE PLATE LIGHTS
- (X2) 1/4" 20 X 3/4" LONG GRADE 8 HEX BOLT
- (X2) 1/4" SAE WASHER
- (X2) 1/4" 20 NYLOCK NUTS
- (X4) 3/8" 16 X 1" LONG GRADE 8 HEX BOLTS
- (X8) 3/8" SAE WASHER
- (X4) 3/8" 16 NYLOCK NUTS
- (X6) 3/8" 16 X 1" TORX FLAT HEAD BOLTS



REVISIONS		DATE	BY	SAVVY OFFROAD
1	INITIAL RELEASE	11/15/2017	SAVVY	SD0068
INSTRUCTIONS		DATE	BY	SAVVY OFFROAD
1	INITIAL RELEASE	11/15/2017	SAVVY	SD0068
D		DATE	BY	SAVVY OFFROAD
1	INITIAL RELEASE	11/15/2017	SAVVY	SD0068

AGAIN, IF YOU ARE MISSING ANYTHING PLEASE CALL US RIGHT AWAY BEFORE INSTALLING AND TEST FITTING. BEFORE POWDERCOATING OR PAINTING OR INSTALING CHECK TO MAKE SURE YOU HAVE ALL THE CORRECT PARTS AND TEST FIT PARTS TO ENSURE PROPER FITMENT. IF THERE ARE ISSUES, PLEASE CONTACT US AT SAVVYOFFROAD.COM WE WILL NOT TAKE BACK OR SWAP OUT PARTS THAT HAVE BEEN POWDER COATED!

REMOVAL OF THE STOCK JEEP JT GLADIATOR REAR BUMPER

REAR OF VEHICLE (Perform all Steps for the System You Are Installing) Step-by-Step Guide to Removing a Jeep JT Gladiator Rear Bumper and Factory Tow Hitch

Step 1: Preparation

Park the Jeep on a Level Surface: Ensure the vehicle is parked securely on a flat surface. Engage the parking brake.

Disconnect the Battery: To avoid any electrical issues, disconnect the negative terminal of the battery.

Step 2: Remove the Spare Tire (if necessary)

Lower and Remove the Spare Tire: If the spare tire is blocking access to the bumper and tow hitch, use the tire iron to lower and remove it.



Step 3: Remove the License Plate

Remove the License Plate: Unscrew the license plate using a screwdriver. Remove the two bolts behind the license plate bolting the bumper shell to the factory tow hitch. Disconnect the License Plate Lights.

Step 4: Disconnect Electrical Connections

Disconnect the Wiring Harness: Locate the wiring harness for the rear bumper (usually under the bumper on the driver's side). Disconnect it by pressing the release tab and pulling apart.

Step 5: Remove the Bumper Mounting Bolts

Locate the Mounting Bolts: There are typically four bolts on each side of the bumper (two on top and two on the bottom). **Remove the Top Bolts:** Use a ratchet with an 18mm socket to remove the two top bolts on each side of the bumper.

Remove the Bottom Bolts: Use the same ratchet and socket to remove the two bottom bolts on each side.

Step 6: Remove the Bumper

Support the Bumper: If working alone, use jack stands to support the bumper while you remove the bolts. If you have an assistant, have them hold the bumper. **Slide the Bumper Off:** Carefully pull the bumper away from the vehicle. It might be helpful to wiggle it slightly to release it from any clips or brackets.



Step 7: Remove the Factory Tow Hitch

Locate the Tow Hitch Bolts: The factory tow hitch is secured by several bolts, two on the outside of the frame and two on the bottom side. **Remove the Hitch Bolts:** Use a ratchet with a 21mm socket to remove the bolts securing the tow hitch to the frame. **(SAVE THESE BOLTS THEY WILL BE NEEDED TO INSTALL THE SAVVY CROSS MEMBER).**



Disconnect the Wiring Harness: If the tow hitch has wiring for trailer lights, disconnect the wiring harness.

Remove the Tow Hitch: Once all bolts are removed, carefully lower and remove the tow hitch from the vehicle.

Step 8: Remove Any Additional Components (if necessary)

Step 9: Clean Up

Clean the Area: Before installing a new bumper or reattaching the old one, clean the area to remove any dirt or debris.

Step 10: Remove factory sensors if you have them from the bumper shell with the wiring harness. Remember or mark orientation of sensors location and reinstall on the new shell in the same location as the stock shell using the new sensor holders.

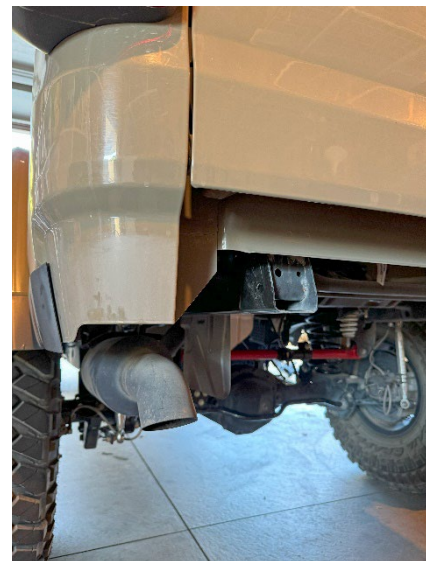
TIPS:

Label Screws and Bolts: Keep track of all screws and bolts by labeling them or placing them in labeled containers. You will have to reuse some of the factor hardware to install the Savvy bumper.

Use Jack Stands: If the bumper or tow hitch is heavy, use jack stands to hold them in place while you work.

Take Photos: If you are unfamiliar with the process, take photos of each step to help with reassembly.

By following these steps and using the necessary tools, you can safely and efficiently remove the rear bumper and factory tow hitch from a Jeep JT Gladiator.



NOW YOU CAN TEST FIT AND START THE INSTILATION PROCESS

Installation

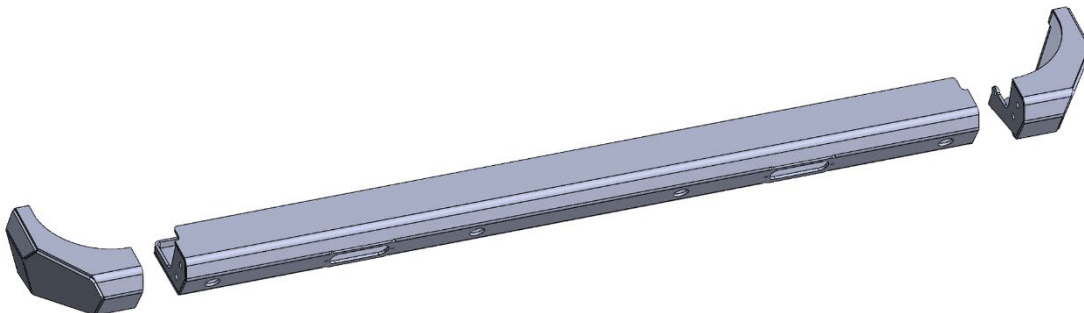
Step 1: Prepare the Factory Wiring Harness & Sensors

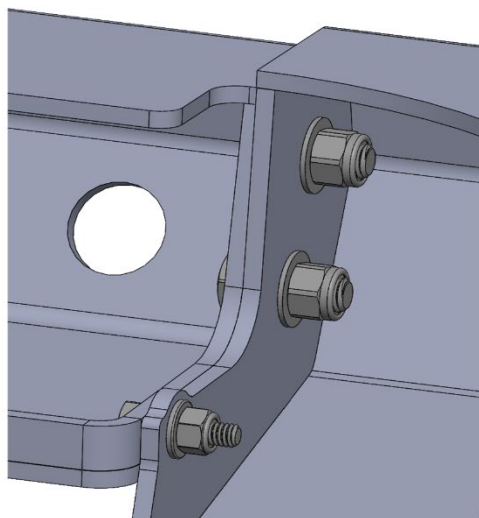
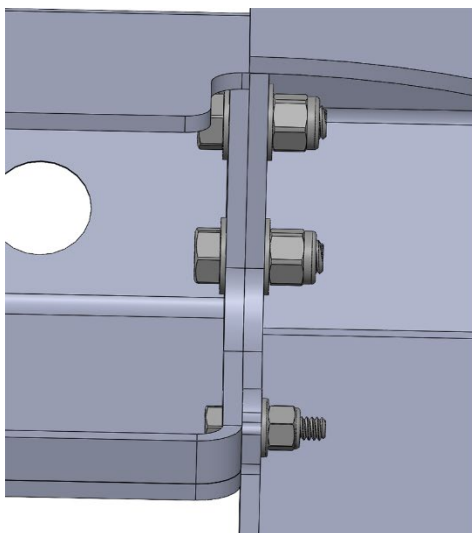
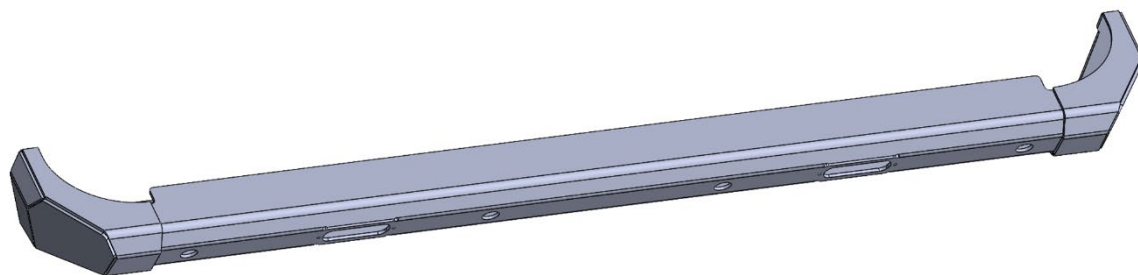
If you have factory back up sensors in the rear bumper now is the time to remove them. Mark them from the location they were removed from so they can be put in the new bumper skin in the same orientation. ***** NOT PUTTING THEM BACK IN THE SAME ORIENTATION AND ORDER CAN CAUSE CALIBRATION ISSUES*******. You can leave the wiring attached to the individual sensors and remove the whole harness as one unit. This will require cutting the factory ties holding the harness in. Also Find and separate out the license plate lights wiring, if you plan on using the license plate lights you will need to extend this wiring and re-run it up through the tailgate wiring and port for the license plate relocation to the tailgate in (STEP)

To remove the sensor, use a plastic trim removal tool or a flat head screwdriver. Using a plastic trim removal tool, gently pry around the edges of the sensor housing to loosen it from the bumper skin. Avoid using excessive force to prevent damaging the sensor or the bumper skin. Use the trim tool or a small flathead screwdriver to release the clips. Carefully push the sensor out of the hole from the front to back. Once removed, inspect the sensors for any damage or dirt. Store the sensors in a safe, clean location if you plan to reuse or reinstall them.

Step 2: Assemble the end caps

Assemble the end caps SD0053 or SD0054 to the bumper center section SD0052. For doing this you will need the following hardware (X4) 3/8" 16 TPI X 1" long grade 8 hex bolts, (X8) 3/8" SAE washers, (X4) 3/8" Nylock Hex Nuts, (X2) 1/4" 20 TPI X .750" long grade 8 hex bolts, (X2) 1/4" SAE washers and (X2) 1/4" 20 Nylock Hex Nuts. Lightly tighten the cap bolts, align the end cap then fully tighten down the end cap bolts.





Step 3: Install Sensor Holders & Sensors or Sensor Holes Plugs

If you have sensors now would be the time to install the 4 new sensor holders, sensors and harness. If you do not have reverse sensors, you can install the 4 provided sensor hole plugs. Now is also the time to install any reverse lights you plan on using.

NOTE: Remember to install the sensors in the same orientation that you took them out of the stock bumper.



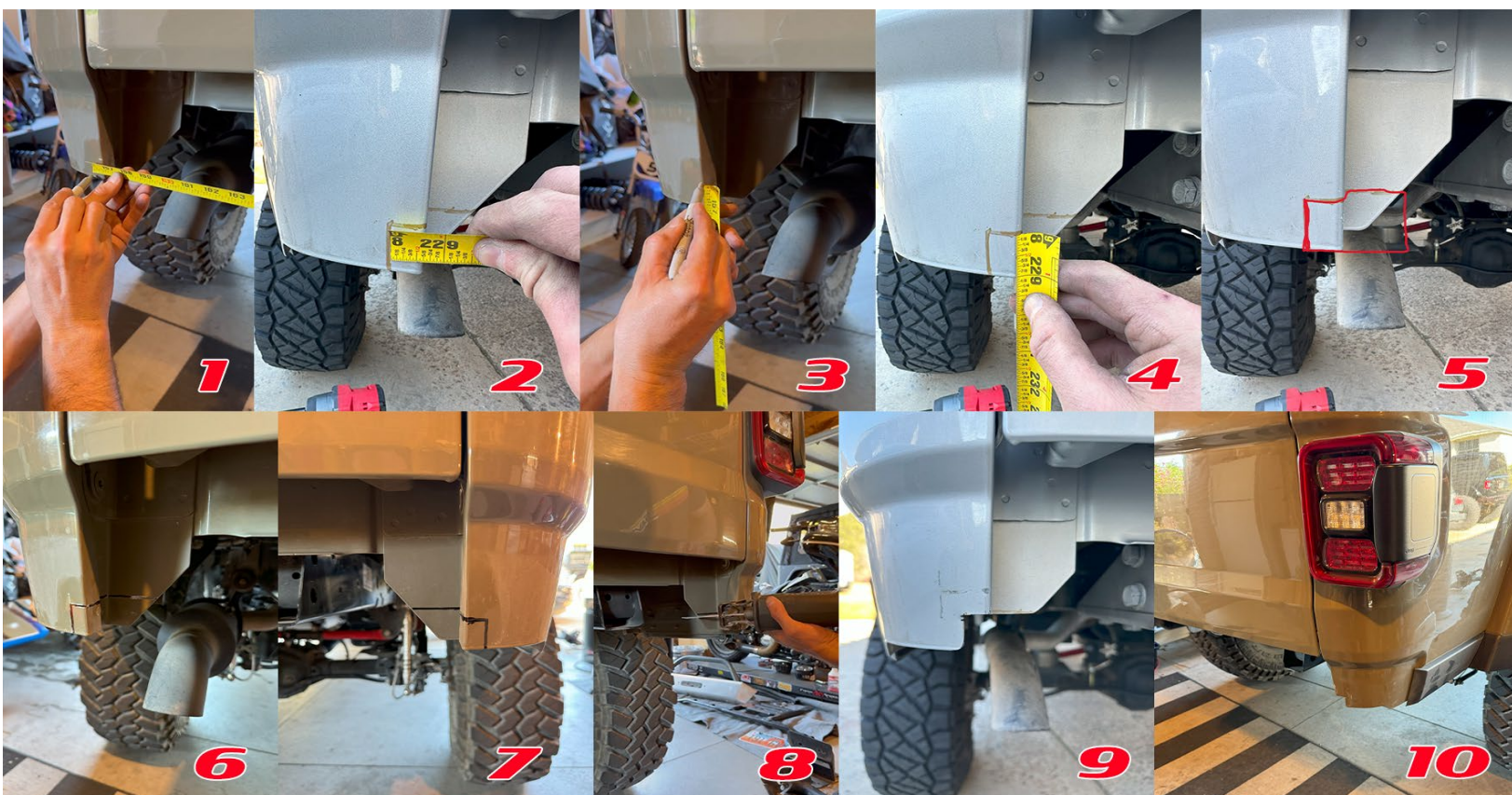
Once you have the sensors or sensor plugs and end caps you now have the rear bumper skin prepped. Before the bumper skin can go on there is some trimming that needs to be done. If you are running after market reverse light or back up lights now is the time to install them into the skin.

Step 4: Trim Inside Bed Seam

For both versions SD0039 & SD0068 you will need to trim the inside bed seam under the tail gate.



PHOTO 1 & 2: Measure from the inside lip to the the outside of the vehicle 5/8". **PHOTO 3 & 4:** Measure from the bottom corner up 1". **PHOTO 5,6 & 7:** Using a square or straight edge continue the cut line to the inside and along the back as shown in the photos. **PHOTO 8:** Using a die grinder, grinder with cut off wheel or sawzall (pick your cutting tool of choice) and cut out this section of sheet metal. Not supplied but suggested use a paint marker or edge trim along the cut edge to help protect against rust. If you are installing SD0039 you have no more trimming and can continue onto (STEP 6). If you are installing SD0068 Complete (STEP 5) and then continue to (Step 6)



Step 5: Trim For Bed Trim Kit (SD0068) ONLY!

For the OG Legacy version (SD0068), trimming of the bedside and bed corners is required to install the bed trim kit and high-clearance corners. Refer to the images below for detailed guidance on where to make the necessary cuts. To make the cuts you can use a cut-off wheel, Sawzall, air body saw or whatever your preferred method is for cutting sheet metal. There are two trimming options for the bedside. The red cut line allows you to reinstall the stock bumper and plastic bedside caps if needed. The blue cut line is for permanent modification, ideal for those who do not plan to revert the vehicle back to stock.



The image below shows the trimmed bedside.



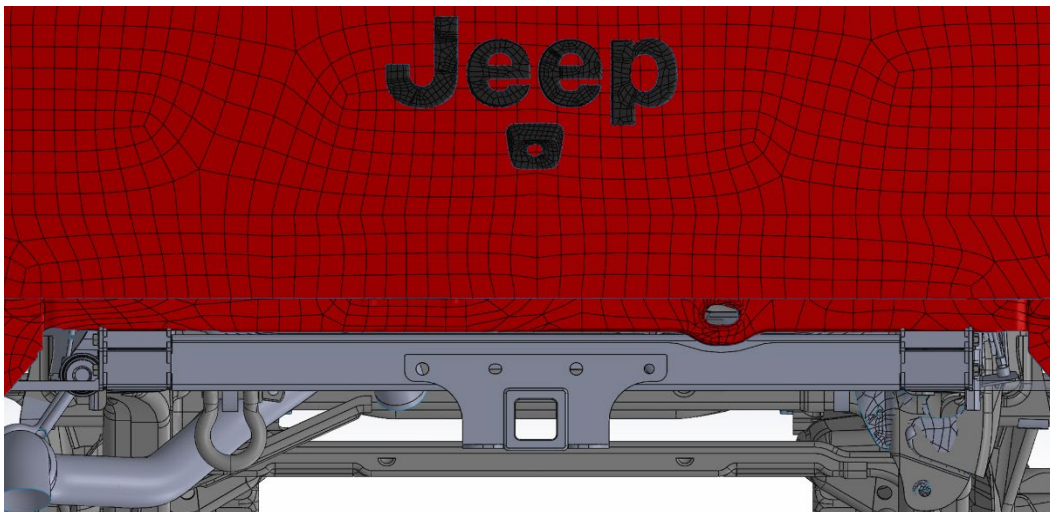
Step 6: Install SAVVY Cross-Member

Next you will install the SD0055 JT REAR CROSS-MEMBER. Re-using the factory hardware from the factory hitch, bolt in the new crossmember by sliding it over the factory frame rails and positioning the crossmember beneath the rear frame where the factory mounting holes are located. Align the crossmembers mounting holes with the pre-drilled holes on the vehicle's frame. Ensure the cross-member is centered and properly aligned. Insert the 4 long 14mm factory bolts through the mounting holes on the cross-member and into the frame. Hand-tighten the bolts first to ensure proper alignment using the supplied (X4) 14mm flange nuts. This will hold the crossmember in place and allow you to get the short X4 14mm bolts into the bottom of the hitch. Once all bolts are loosely in place, use a socket wrench to tighten them gradually. It is best to tighten the bottom 4 bolts first to suck the cross-member up to the frame rails. Torque the bolts to the specifications provided in the tow hitch manual (typically 75-100 ft-lbs). Refer to the manufacturer's specifications for exact torque values. Check for proper alignment and ensure no parts are loose. If you are installing a FACTOR JEEP 2019-2020 JEEP JL/JLU BOLT ON HITCH NOW IS THE TIME TO DO THAT. If you are not skip to (STEP 8)



Step 7: Install JEEP JL / JLU Factory Hitch

JL/JLU FACTORY HITCH (PURCHASED SEPARATELY) Make sure and verify all parts of the tow hitch kit are included. Tow hitch receiver and mounting bolts and washers. Position the tow hitch receiver under the rear frame of the cross-member, aligning its mounting holes with the pre-cut holes in the cross-member. The hitch should fit snugly against the crossmember. Insert the supplied bolts through the mounting holes in the hitch and into the vehicle's frame. Start with hand-tightening the bolts to ensure proper alignment. Torque the bolts to the manufacturer's recommended specification (usually 75-100 ft-lbs). Refer to the manufacturer's specifications for exact torque values. Check the alignment of the hitch receiver. Ensure all bolts are torqued to specification and that no parts are loose.



Step 8: Install Bumper Skin

Install the assembled bumper skin using (4) 3/8"-16 x 0.75" hex bolts and (4) 3/8" SAE washers. Hold the bumper skin up to the cross-member and if you are running sensors and lights, insert the harness / wiring between the cross-member and the Jeep body. Next slide the bumper skin onto the crossmember, ensuring it bottoms out and the gap between the bumper skin and the body is properly set. Hand-tighten the (4) mounting bolts and check the clearance between the bumper skin and the Jeep body. If adjustments are needed, slide the skin back slightly. Once properly aligned, fully tighten the bolts to secure the bumper skin to the crossmember. If you are not installing a hitch skip to (STEP 10) If you are using a JL/JLU hitch continue to (STEP 9).



Step 9: Install JL/JLU Hitch Plug Bracket and Hitch Plug

For the JL/JLU hitch purchased separately, a trailer hitch plug bracket should be included. Reuse the hitch plug from your stock JT bumper by inserting and clipping it into the new bracket. Using the included (2) 0.1875" thick aluminum spacers and (2) 3/8" bolts or button-head screws (sold separately, 0.75" to 1.0" long), attach the hitch plug bracket to the crossmember. Place the aluminum spacer between the bracket and the crossmember for proper alignment. If you are installing SD0068 continue onto the next step (STEP 10). If you are installing SD0039 continue to (STEP 11).

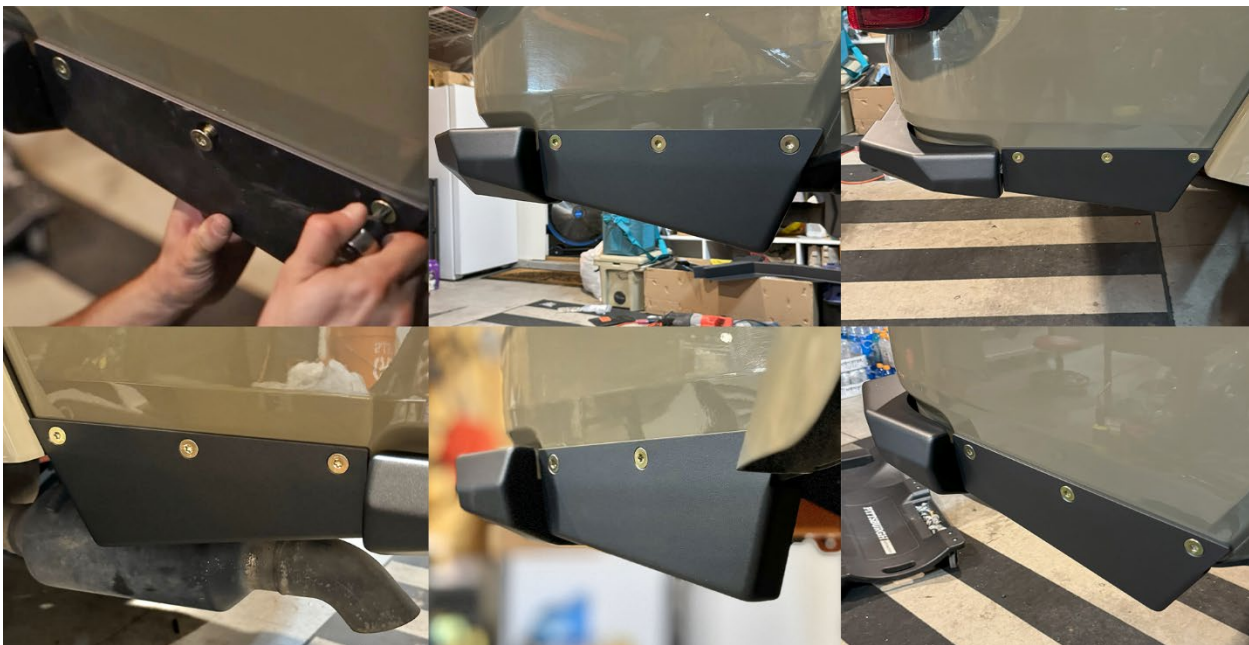
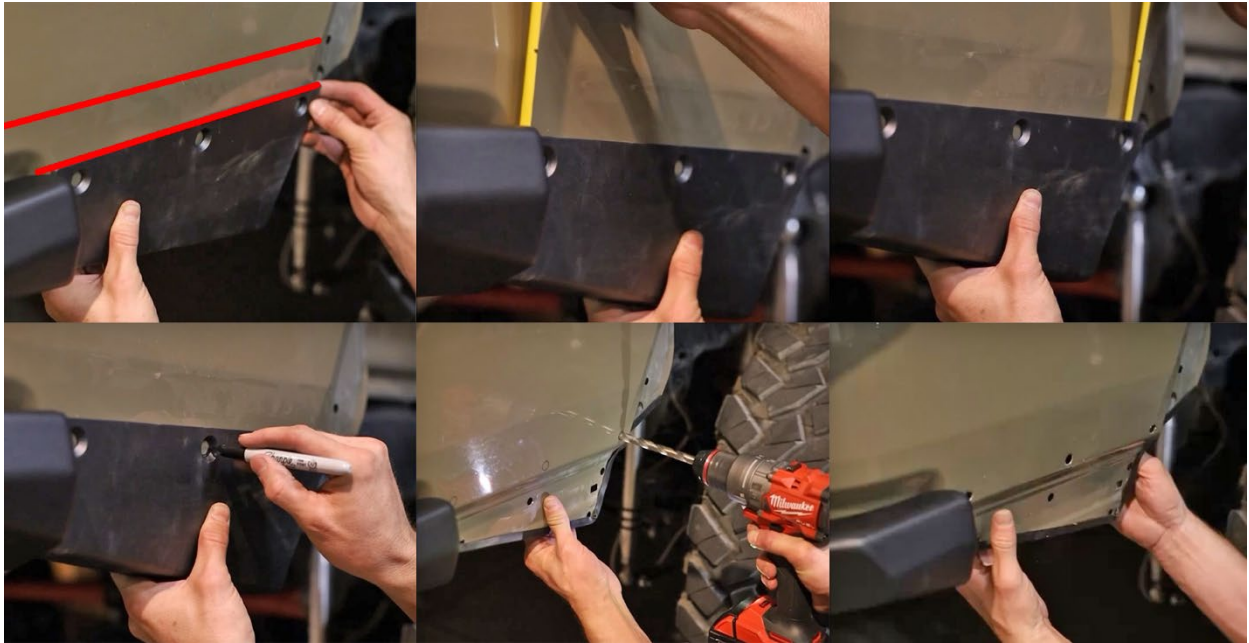


Step 10: Installing Bedside Trim Kit

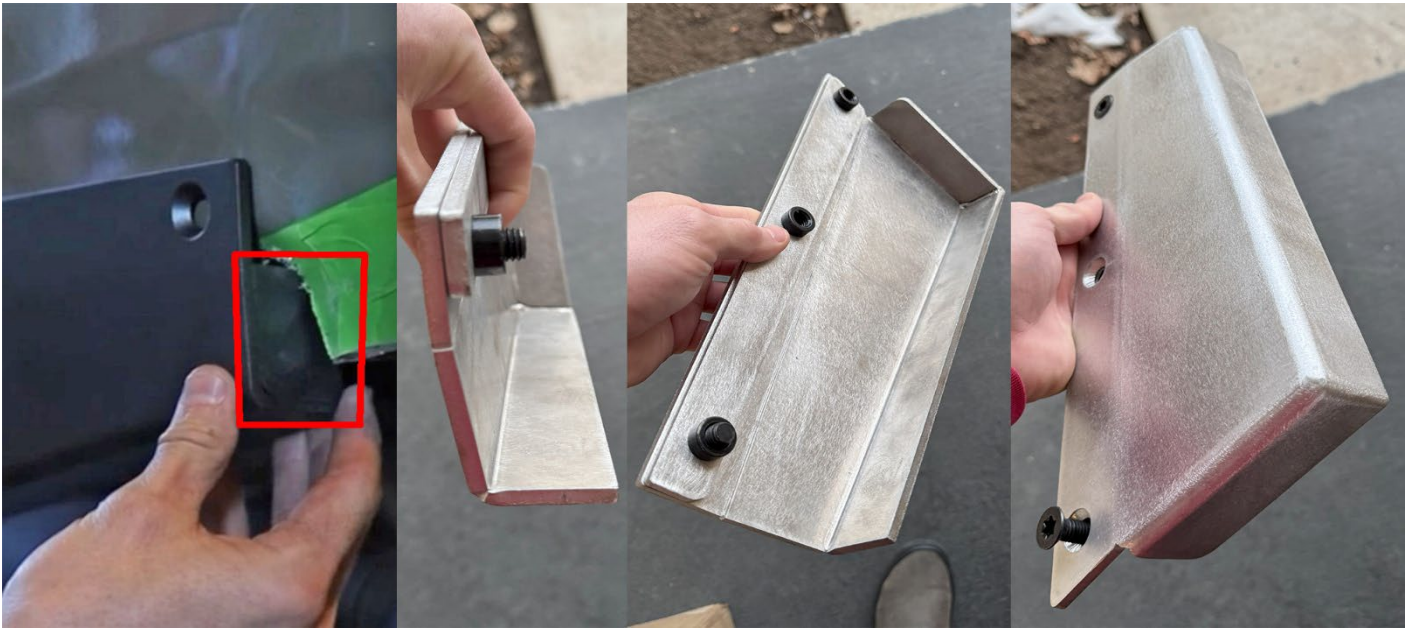
Installing the bedside trim kit. Align the Trim Piece & hold the bedside trim piece against the bed, ensuring it is parallel to the body line and bumper cap. Mark the Drill Points, using the trim piece as a guide, mark the locations for the three mounting holes on both the passenger and driver sides. Drill the Mounting Holes, use a 3/8" drill bit to drill the marked holes on each side. Install the Backing Plate, slide the nut bracket backing plate into the backside of the bed. Secure the Trim Piece, align the trim piece with the drilled holes, insert the bolts, and tighten to secure the bedside trim kit in place.

Special Note for Step 10: In the first production batch of bedside trim caps, an extra flange was included, as shown in the third picture below. To simplify installation, you can trim this flange off the bedside trim piece. Removing the flange from the trim piece is easier than modifying the bedside for clearance.

The third picture below illustrates where to trim and how the piece should look once modified. We apologize for any inconvenience; newer production batches have been updated and no longer include the extra flange.



Special Note Image for STEP 10: EXTRA FLANGE



Step 11: License Plate Relocation

The license plate can be relocated to multiple positions based on your preference. Image 1 below provides a few placement ideas. Once you determine your preferred location, use the license plate backing plate as a drill template. **Drilling & Mounting**, position the relocation plate where you'd like to install the license plate. Use the plate as a template to mark the holes that need to be drilled. Drill the marked holes using a ¼" drill bit. Before drilling, remove the two access panels on the back of the tailgate. This allows you to check clearance and ensure you're avoiding the tailgate's internal frame brace. If installing below the backup camera, drill carefully—the two lower holes align with the shallowest section of the tailgate. **License Plate Light Options**: the kit includes two LED lights, which can be installed in the top two holes. Alternatively, an ORU light (sold separately) can be used. For off-road use only, you may choose to run the plate without lights. **Wiring Instructions**, run the license plate light wiring from the Jeep's stock bumper harness up through the bottom wiring access panel in the tailgate to the new plate location. On some Gladiators, if the factory harness tape is trimmed back, there may be enough wire length to reach the new LED location. If additional length is needed, simply splice in extra wire to extend the harness. This relocation method ensures a clean, secure, and functional installation while maintaining visibility and compliance.



Installation Complete – Your Jeep JT Gladiator is Trail-Ready!

Congratulations! You've just installed the highest clearance Jeep JT Gladiator rear bumper in the world, giving you unmatched departure angles and ultimate off-road capability. Your bumper no longer limits your trail choices—it's time to put it to the test!

Now, get out there and hit the trails! If you have any questions or need assistance, don't hesitate to reach out. WWW.SAVVYOFFROAD.COM OR Call: 801-876-9599 See you on the trails!

NOTES: